

Recombinant human p38 delta/MAPK13 protein ab125643

画像数 5

製品の詳細

製品名	Recombinant human p38 delta/MAPK13 protein
生理活性	The specific activity of ab125643 was determined to be 120 nmol/min/mg as per activity assay protocol and equivalent to 151 nmol/min/mg as per radiometric assay
精製度	> 90 % Densitometry. Purity was determined to be >90% by densitometry. Affinity purified.
発現系	Baculovirus infected Sf9 cells
アクセッション番号	<u>O15264</u>
タンパク質長	Full length protein
Animal free	No
由来	Recombinant
生物種	Human
予測される分子量	71 kDa including tags
領域	1 to 365

特性

Our **Abpromise guarantee** covers the use of **ab125643** in the following tested applications.

The application notes include recommended starting dilutions; optimal dilutions/concentrations should be determined by the end user.

アプリケーション	Western blot Functional Studies SDS-PAGE
製品の状態	Liquid

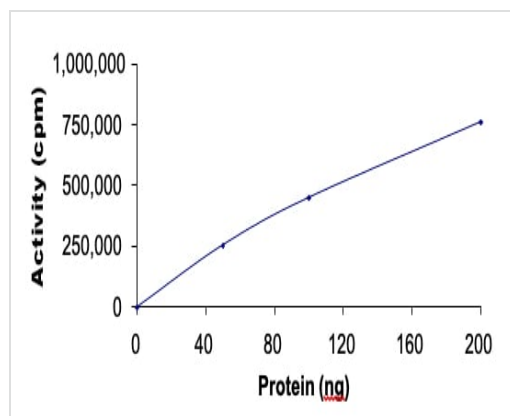
前処理および保存

保存方法および安定性	Shipped on dry ice. Upon delivery aliquot and store at -80°C. Avoid freeze / thaw cycles. pH: 7.50 Constituents: 0.31% Glutathione, 0.002% PMSF, 0.004% DTT, 0.79% Tris HCl, 0.003% EDTA, 25% Glycerol (glycerin, glycerine), 0.88% Sodium chloride This product is an active protein and may elicit a biological response in vivo, handle with caution.
------------	---

関連情報

機能	Responds to activation by environmental stress and pro-inflammatory cytokines by phosphorylating downstream targets. Plays a role in the regulation of protein translation by phosphorylating and inactivating EEF2K.
組織特異性	Expressed in testes, pancreas, small intestine, lung and kidney. Abundant in macrophages, also present in neutrophils, CD4+ T-cells, and endothelial cells.
配列類似性	Belongs to the protein kinase superfamily. CMGC Ser/Thr protein kinase family. MAP kinase subfamily. Contains 1 protein kinase domain.
ドメイン	The TXY motif contains the threonine and tyrosine residues whose phosphorylation activates the MAP kinases.
翻訳後修飾	Dually phosphorylated on Thr-180 and Tyr-182, which activates the enzyme.

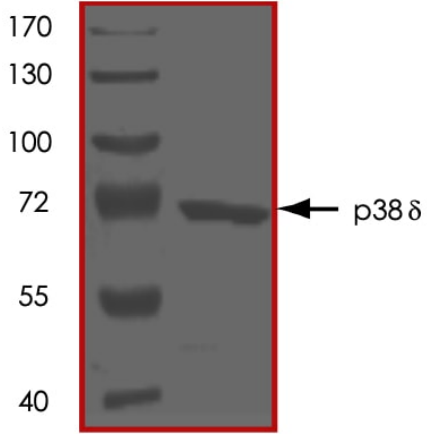
画像



The specific activity of MAPK 13 (ab125643) was determined to be 128 nmol/min/mg as per activity assay protocol and was equivalent to 161 nmol/min/mg as per radiometric assay

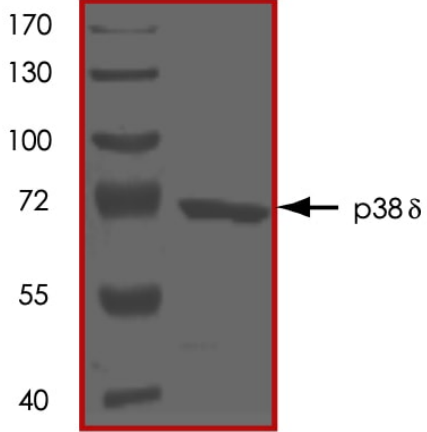
Functional Studies - Recombinant human p38
delta/MAPK13 protein (ab125643)

SDS PAGE analysis of ab125643



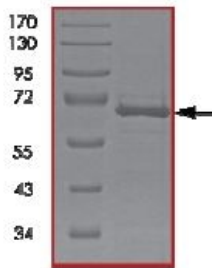
SDS-PAGE - Recombinant human p38 delta/MAPK13 protein (ab125643)

SDS PAGE analysis of ab125643

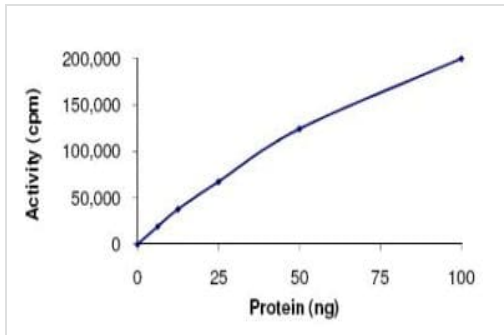


SDS-PAGE - Recombinant human p38 delta/MAPK13 protein (ab125643)

SDS-PAGE analysis of ab125643.



SDS-PAGE - Recombinant human p38 delta/MAPK13 protein (ab125643)



The specific activity of ab125643 was determined to be 140 nmol/min/mg by Kinase Assay.

Functional Studies - Recombinant human p38
delta/MAPK13 protein (ab125643)

Please note: All products are "FOR RESEARCH USE ONLY. NOT FOR USE IN DIAGNOSTIC PROCEDURES"

Our Abpromise to you: Quality guaranteed and expert technical support

- Replacement or refund for products not performing as stated on the datasheet
- Valid for 12 months from date of delivery
- Response to your inquiry within 24 hours
- We provide support in Chinese, English, French, German, Japanese and Spanish
- Extensive multi-media technical resources to help you
- We investigate all quality concerns to ensure our products perform to the highest standards

If the product does not perform as described on this datasheet, we will offer a refund or replacement. For full details of the Abpromise, please visit <https://www.abcam.co.jp/abpromise> or contact our technical team.

Terms and conditions

- Guarantee only valid for products bought direct from Abcam or one of our authorized distributors