

Recombinant Human OLFM4 protein ab112393

画像数 1

製品の詳細

製品名	Recombinant Human OLFM4 protein
発現系	Wheat germ
アクセッション番号	Q6UX06
タンパク質長	Full length protein
Animal free	No
由来	Recombinant
生物種	Human
予測される分子量	84 kDa including tags
領域	1 to 510

特性

Our **Abpromise guarantee** covers the use of **ab112393** in the following tested applications.

The application notes include recommended starting dilutions; optimal dilutions/concentrations should be determined by the end user.

アプリケーション	ELISA
	SDS-PAGE
	Western blot

製品の状態	Liquid
-------	--------

前処理および保存

保存方法および安定性	Shipped on dry ice. Upon delivery aliquot and store at -80°C. Avoid freeze / thaw cycles. pH: 8.00 Constituents: 0.31% Glutathione, 0.79% Tris HCl
------------	--

関連情報

機能	An antiapoptotic factor that promotes tumor growth. Promotes proliferation of pancreatic cancer cells by favoring the transition from the S to G2/M phase. Facilitates cell adhesion.
組織特異性	Expressed during myeloid lineage development. Strongly expressed in the prostate, small

配列類似性

intestine and colon and moderately expressed in the bone marrow and stomach. Highly expressed in pancreatic cancer tissues and shows an elevated expression level during the early S phase of the cell cycle. Also expressed at high levels in stomach cancer and colon cancer tissues.

ドメイン

Contains 1 olfactomedin-like domain.

翻訳後修飾

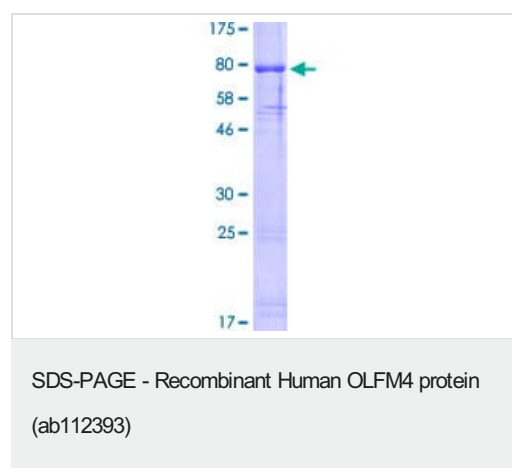
The olfactomedin-like domain is involved in the interaction with cadherin.

細胞内局在

N-glycosylated.

Secreted > extracellular space. According to PubMed:15059901, found in mitochondrion and nucleus.

画像



12.5% SDS-PAGE analysis of ab112393. Stained with Coomassie Blue.

Please note: All products are "FOR RESEARCH USE ONLY. NOT FOR USE IN DIAGNOSTIC PROCEDURES"

Our Abpromise to you: Quality guaranteed and expert technical support

- Replacement or refund for products not performing as stated on the datasheet
- Valid for 12 months from date of delivery
- Response to your inquiry within 24 hours
- We provide support in Chinese, English, French, German, Japanese and Spanish
- Extensive multi-media technical resources to help you
- We investigate all quality concerns to ensure our products perform to the highest standards

If the product does not perform as described on this datasheet, we will offer a refund or replacement. For full details of the Abpromise, please visit <https://www.abcam.co.jp/abpromise> or contact our technical team.

Terms and conditions

- Guarantee only valid for products bought direct from Abcam or one of our authorized distributors