

Recombinant Human NSMase2 protein ab112416

1 References [画像数 1](#)

製品の詳細

製品名	Recombinant Human NSMase2 protein
生理活性	useful for Antibody Production and Protein Array
発現系	Wheat germ
アクセッション番号	<u>Q9NY59</u>
タンパク質長	Full length protein
Animal free	No
由来	Recombinant
生物種	Human
予測される分子量	98 kDa including tags
領域	1 to 655

特性

Our **Abpromise guarantee** covers the use of **ab112416** in the following tested applications.

The application notes include recommended starting dilutions; optimal dilutions/concentrations should be determined by the end user.

アプリケーション	SDS-PAGE Western blot ELISA
製品の状態	Liquid
備考	This product is useful for Antibody Production and Protein Array.

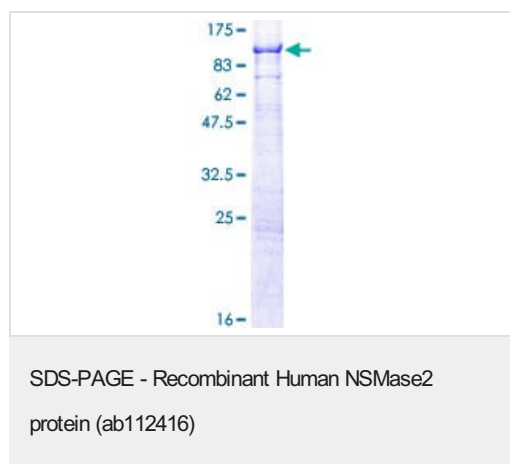
前処理および保存

保存方法および安定性	Shipped on dry ice. Upon delivery aliquot and store at -80°C. Avoid freeze / thaw cycles. pH: 8.00 Constituents: 0.31% Glutathione, 0.79% Tris HCl (Glutathione is reduced)
------------	--

関連情報

機能	Catalyzes the hydrolysis of sphingomyelin to form ceramide and phosphocholine. Ceramide mediates numerous cellular functions, such as apoptosis and growth arrest, and is capable of regulating these 2 cellular events independently. Also hydrolyzes sphingosylphosphocholine. Regulates the cell cycle by acting as a growth suppressor in confluent cells. Probably acts as a regulator of postnatal development and participates in bone and dentin mineralization.
組織特異性	Predominantly expressed in brain.
配列類似性	Belongs to the neutral sphingomyelinase family.
発生段階	Up-regulated during G0/G1 phases.
細胞内局在	Golgi apparatus membrane. Cell membrane. May localize to detergent-resistant subdomains of Golgi membranes of hypothalamic neurosecretory neurons. According to PubMed:15051724, it localizes to plasma membrane in confluent contact-inhibited cells.

画像



12.5% SDS-PAGE stained with Coomassie Blue.

Please note: All products are "FOR RESEARCH USE ONLY. NOT FOR USE IN DIAGNOSTIC PROCEDURES"

Our Abpromise to you: Quality guaranteed and expert technical support

- Replacement or refund for products not performing as stated on the datasheet
- Valid for 12 months from date of delivery
- Response to your inquiry within 24 hours
- We provide support in Chinese, English, French, German, Japanese and Spanish
- Extensive multi-media technical resources to help you
- We investigate all quality concerns to ensure our products perform to the highest standards

If the product does not perform as described on this datasheet, we will offer a refund or replacement. For full details of the Abpromise, please visit <https://www.abcam.co.jp/abpromise> or contact our technical team.

Terms and conditions

- Guarantee only valid for products bought direct from Abcam or one of our authorized distributors