

# Recombinant Human NSE protein ab78797

画像数 2

### 製品の詳細

製品名	Recombinant Human NSE protein
精製度	> 95 % SDS-PAGE. Purity is > 98% by SDS PAGE. ab78797 is purified using conventional chromatography techniques.
エンドトキシン・レベル	< 1.000 Eu/μg
発現系	Escherichia coli
タンパク質長	Full length protein
Animal free	No
由来	Recombinant
生物種	Human
配列	

```
MSIEKIWARE ILDSRGNPTV EVDLYTAKGL  
FRAAVPSGAS TGIYEALELR DGDKQRYLGK  
GVLKAVDHIN STIAPALISS GLSVVEQEKL  
DNLMLELDGT ENKSKFGANA ILGVSLAVCK  
AGAAERELPL YRHIAQLAGN SDLILPVPAF  
NVINGGSHAG NKLAMQEFMI LPVGAESFRD  
AMRLGAEVYH TLKGVKDKY GKDATNVGDE  
GGFAPNILEN SEALELVKEA IDKAGYTEKI  
VIGMDVAASE FYRDGKYDLD FKSPTDPSRY  
ITGDQLGALY QDFVRDYPVV SIEDPFDQDD  
WAAWSKFTAN VGIQIVGDDL TVTNPKRIER  
AVEEKACNCL LLKVNQIGSV TEAIQACKLA  
QENGWGVMVS HRSGETEDTF IADLVVGLCT  
GQIKTGAPCR SERLAKYNQL MRIEEELGDE  
ARFAGHNFRN PSVL
```

### 特性

Our **Abpromise guarantee** covers the use of **ab78797** in the following tested applications.

The application notes include recommended starting dilutions; optimal dilutions/concentrations should be determined by the end user.

アプリケーション	Western blot
	SDS-PAGE

**製品の状態**

Liquid

**前処理および保存****保存方法および安定性**

Shipped at 4°C. Upon delivery aliquot and store at -20°C. Avoid freeze / thaw cycles.

pH: 7.50

Constituents: 0.75% Potassium chloride, 0.242% Tris, 0.06% Magnesium sulphate

**関連情報****機能**

Has neurotrophic and neuroprotective properties on a broad spectrum of central nervous system (CNS) neurons. Binds, in a calcium-dependent manner, to cultured neocortical neurons and promotes cell survival.

**組織特異性**

The alpha/alpha homodimer is expressed in embryo and in most adult tissues. The alpha/beta heterodimer and the beta/beta homodimer are found in striated muscle, and the alpha/gamma heterodimer and the gamma/gamma homodimer in neurons.

**パスウェイ**

Carbohydrate degradation; glycolysis; pyruvate from D-glyceraldehyde 3-phosphate: step 4/5.

**配列類似性**

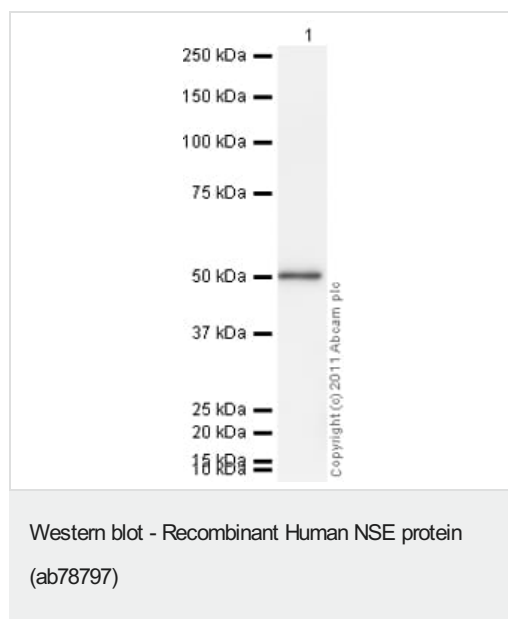
Belongs to the enolase family.

**発生段階**

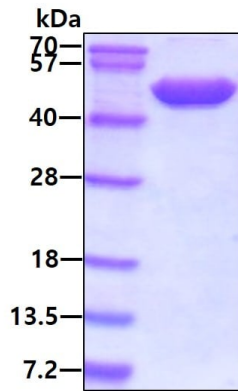
During ontogenesis, there is a transition from the alpha/alpha homodimer to the alpha/beta heterodimer in striated muscle cells, and to the alpha/gamma heterodimer in nerve cells.

**細胞内局在**

Cytoplasm. Cell membrane. Can translocate to the plasma membrane in either the homodimeric (alpha/alpha) or heterodimeric (alpha/gamma) form.

**画像**

SDS-PAGE analysis of ab78797 (3µg).



SDS-PAGE - Recombinant Human NSE protein  
(ab78797)

**Please note:** All products are "FOR RESEARCH USE ONLY. NOT FOR USE IN DIAGNOSTIC PROCEDURES"

### Our Abpromise to you: Quality guaranteed and expert technical support

---

- Replacement or refund for products not performing as stated on the datasheet
- Valid for 12 months from date of delivery
- Response to your inquiry within 24 hours
- We provide support in Chinese, English, French, German, Japanese and Spanish
- Extensive multi-media technical resources to help you
- We investigate all quality concerns to ensure our products perform to the highest standards

If the product does not perform as described on this datasheet, we will offer a refund or replacement. For full details of the Abpromise, please visit <https://www.abcam.co.jp/abpromise> or contact our technical team.

### Terms and conditions

---

- Guarantee only valid for products bought direct from Abcam or one of our authorized distributors