

### Recombinant Human NOTCH3 protein ab114234

画像数 1

#### 製品の詳細

製品名	Recombinant Human NOTCH3 protein
発現系	Wheat germ
アクセッション番号	<u><b>Q9UM47</b></u>
タンパク質長	Protein fragment
Animal free	No
由来	Recombinant
生物種	Human
配列	SPCANGGRCTQLPSREAACLCPPGWVGERCQLEDPCCHSGPCA GRGVCQSS VVAGTARFSCRCPRGFRGPDCSLPD PCLSSPCAHGARCSVGPDGRFLC SCPPGYQGRSCR
予測される分子量	38 kDa including tags
領域	47 to 156

#### 特性

Our **Abpromise guarantee** covers the use of **ab114234** in the following tested applications.

The application notes include recommended starting dilutions; optimal dilutions/concentrations should be determined by the end user.

アプリケーション	ELISA
	SDS-PAGE
	Western blot
製品の状態	Liquid
備考	

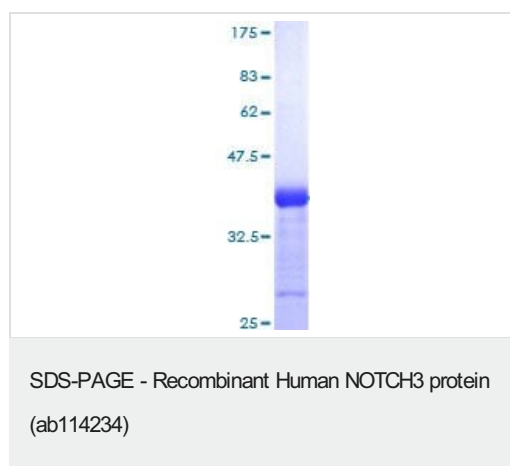
#### 前処理および保存

保存方法および安定性	Shipped on dry ice. Upon delivery aliquot and store at -80°C. Avoid freeze / thaw cycles. pH: 8.00 Constituents: 0.3% Glutathione, 0.79% Tris HCl
------------	---------------------------------------------------------------------------------------------------------------------------------------------------------

## 関連情報

機能	Functions as a receptor for membrane-bound ligands Jagged1, Jagged2 and Delta1 to regulate cell-fate determination. Upon ligand activation through the released notch intracellular domain (NICD) it forms a transcriptional activator complex with RBPJ/RBPSUH and activates genes of the enhancer of split locus. Affects the implementation of differentiation, proliferation and apoptotic programs.
組織特異性	Ubiquitously expressed in fetal and adult tissues.
関連疾患	Defects in NOTCH3 are the cause of cerebral autosomal dominant arteriopathy with subcortical infarcts and leukoencephalopathy (CADASIL) [MIM:125310]. CADASIL causes a type of stroke and dementia of which key features include recurrent subcortical ischemic events and vascular dementia. The disorder affects relatively young adults of both sexes. Mutations affect highly conserved cysteine residues within epidermal growth factor (EGF)-like repeat domains in the extracellular part of the receptor.
配列類似性	Belongs to the NOTCH family. Contains 5 ANK repeats. Contains 34 EGF-like domains. Contains 3 LNR (Lin/Notch) repeats.
翻訳後修飾	Synthesized in the endoplasmic reticulum as an inactive form which is proteolytically cleaved by a furin-like convertase in the trans-Golgi network before it reaches the plasma membrane to yield an active, ligand-accessible form. Cleavage results in a C-terminal fragment N(TM) and a N-terminal fragment N(EC). Following ligand binding, it is cleaved by TNF-alpha converting enzyme (TACE) to yield a membrane-associated intermediate fragment called notch extracellular truncation (NEXT). This fragment is then cleaved by presenilin dependent gamma-secretase to release a notch-derived peptide containing the intracellular domain (NICD) from the membrane. Phosphorylated.
細胞内局在	Cell membrane and Nucleus. Following proteolytical processing NICD is translocated to the nucleus.

## 画像



12.5% SDS-PAGE showing ab114234 at approximately 37.73kDa stained with Coomassie Blue.

### **Our Abpromise to you: Quality guaranteed and expert technical support**

---

- Replacement or refund for products not performing as stated on the datasheet
- Valid for 12 months from date of delivery
- Response to your inquiry within 24 hours
  
- We provide support in Chinese, English, French, German, Japanese and Spanish
- Extensive multi-media technical resources to help you
- We investigate all quality concerns to ensure our products perform to the highest standards

If the product does not perform as described on this datasheet, we will offer a refund or replacement. For full details of the Abpromise, please visit <https://www.abcam.co.jp/abpromise> or contact our technical team.

### **Terms and conditions**

---

- Guarantee only valid for products bought direct from Abcam or one of our authorized distributors