

Product datasheet

Recombinant Human Notch2 protein ab114827

画像数 1

製品の詳細

製品名	Recombinant Human Notch2 protein
発現系	Wheat germ
アクセッション番号	Q04721
タンパク質長	Protein fragment
Animal free	No
由来	Recombinant
生物種	Human
配列	QCRDGYEPCVNEGMCVTYHNGTGYCKCPEGFLGEYCQHRDPC EKNRCQNG GTCVAQAMLGKATCRCASGFTGEDCQYSTSHPCFVSRPCLNG GTCHMLSR DTYEECTCQVG
予測される分子量	38 kDa including tags
領域	27 to 136

特性

Our **Abpromise guarantee** covers the use of **ab114827** in the following tested applications.

The application notes include recommended starting dilutions; optimal dilutions/concentrations should be determined by the end user.

アプリケーション	ELISA SDS-PAGE Western blot
製品の状態	Liquid

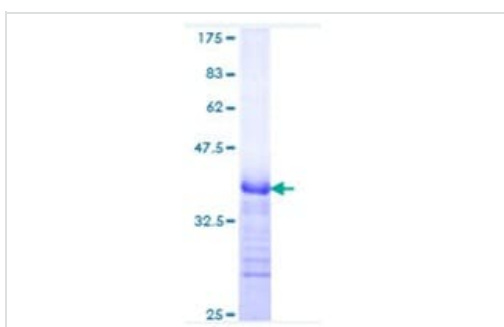
前処理および保存

保存方法および安定性	Shipped on dry ice. Upon delivery aliquot and store at -80°C. Avoid freeze / thaw cycles. pH: 8.00 Constituents: 0.3% Glutathione, 0.79% Tris HCl
------------	---

関連情報

機能	Functions as a receptor for membrane-bound ligands Jagged1, Jagged2 and Delta1 to regulate cell-fate determination. Upon ligand activation through the released notch intracellular domain (NICD) it forms a transcriptional activator complex with RBPJ/RBPSUH and activates genes of the enhancer of split locus. Affects the implementation of differentiation, proliferation and apoptotic programs (By similarity). Involved in bone remodeling and homeostasis. In collaboration with RELA/p65 enhances NFATc1 promoter activity and positively regulates RANKL-induced osteoclast differentiation. Positively regulates self-renewal of liver cancer cells (PubMed:25985737).
組織特異性	Expressed in the brain, heart, kidney, lung, skeletal muscle and liver. Ubiquitously expressed in the embryo.
関連疾患	Alagille syndrome 2 Hajdu-Cheney syndrome
配列類似性	Belongs to the NOTCH family. Contains 6 ANK repeats. Contains 35 EGF-like domains. Contains 3 LNR (Lin/Notch) repeats.
翻訳後修飾	Synthesized in the endoplasmic reticulum as an inactive form which is proteolytically cleaved by a furin-like convertase in the trans-Golgi network before it reaches the plasma membrane to yield an active, ligand-accessible form. Cleavage results in a C-terminal fragment N(TM) and a N-terminal fragment N(EC). Following ligand binding, it is cleaved by TNF-alpha converting enzyme (TACE) to yield a membrane-associated intermediate fragment called notch extracellular truncation (NEXT). This fragment is then cleaved by presenilin dependent gamma-secretase to release a notch-derived peptide containing the intracellular domain (NICD) from the membrane. Hydroxylated by HIF1AN. Can be either O-glucosylated or O-xylosylated at Ser-613 by POGLUT1.
細胞内局在	Cell membrane and Nucleus. Cytoplasm. Following proteolytical processing NICD is translocated to the nucleus. Retained at the cytoplasm by C8orf4 (PubMed:25985737).

画像



12.5% SDS-PAGE Stained with Coomassie Blue

SDS-PAGE - Recombinant Human Notch2 protein
(ab114827)

Please note: All products are "FOR RESEARCH USE ONLY. NOT FOR USE IN DIAGNOSTIC PROCEDURES"

Our Abpromise to you: Quality guaranteed and expert technical support

- Replacement or refund for products not performing as stated on the datasheet
- Valid for 12 months from date of delivery
- Response to your inquiry within 24 hours

- We provide support in Chinese, English, French, German, Japanese and Spanish
- Extensive multi-media technical resources to help you
- We investigate all quality concerns to ensure our products perform to the highest standards

If the product does not perform as described on this datasheet, we will offer a refund or replacement. For full details of the Abpromise, please visit <https://www.abcam.co.jp/abpromise> or contact our technical team.

Terms and conditions

- Guarantee only valid for products bought direct from Abcam or one of our authorized distributors