

Recombinant human NFkB Inducing Kinase NIK protein ab105210

画像数 5

製品の詳細

製品名	Recombinant human NFkB Inducing Kinase NIK protein
生理活性	The Specific activity of ab105210 was determined to be 8 nmol/min/mg.
精製度	> 85 % SDS-PAGE. Purity was determined to be >85% by densitometry. Affinity purified.
発現系	Baculovirus infected Sf9 cells
アクセッション番号	<u>Q99558</u>
タンパク質長	Protein fragment
Animal free	No
由来	Recombinant
生物種	Human
予測される分子量	108 kDa including tags
領域	325 to 947

特性

Our **Abpromise guarantee** covers the use of **ab105210** in the following tested applications.

The application notes include recommended starting dilutions; optimal dilutions/concentrations should be determined by the end user.

アプリケーション	Western blot Functional Studies SDS-PAGE
製品の状態	Liquid
備考	<u>ab64311</u> (Myelin Basic Protein protein) can be utilized as a substrate for assessing kinase activity

前処理および保存

保存方法および安定性	Shipped on dry ice. Upon delivery aliquot and store at -80°C. Avoid freeze / thaw cycles. pH: 7.50
------------	---

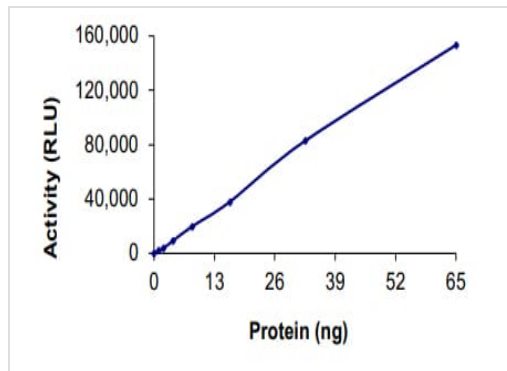
Constituents: 0.307% Glutathione, 0.00174% PMSF, 0.00385% DTT, 0.79% Tris HCl, 0.00292% EDTA, 25% Glycerol (glycerin, glycerine), 0.87% Sodium chloride

This product is an active protein and may elicit a biological response in vivo, handle with caution.

関連情報

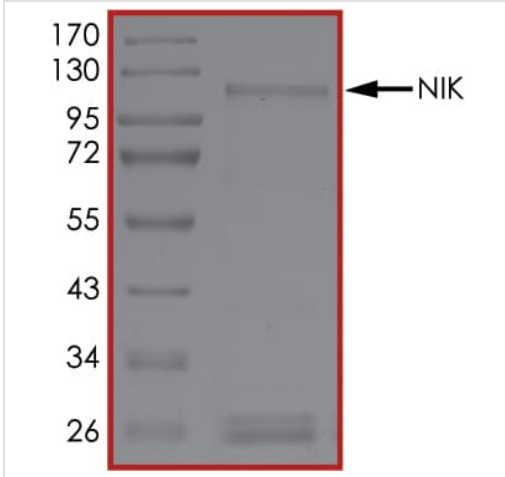
機能	Lymphotoxin beta-activated kinase which seems to be exclusively involved in the activation of NF-kappa-B and its transcriptional activity. Promotes proteolytic processing of NFKB2/P100, which leads to activation of NF-kappa-B via the non-canonical pathway. Could act in a receptor-selective manner.
組織特異性	Weakly expressed in testis, small intestine, spleen, thymus, peripheral blood leukocytes, prostate, ovary and colon.
配列類似性	Belongs to the protein kinase superfamily. STE Ser/Thr protein kinase family. MAP kinase kinase kinase subfamily. Contains 1 protein kinase domain.
翻訳後修飾	Autophosphorylated. Phosphorylation at Thr-559 is required to activates its kinase activity and 'Lys-63'-linked polyubiquitination. Phosphorylated by CHUK/IKKA leading to MAP3K14 destabilization. Ubiquitinated. Undergoes both 'Lys-48'- and 'Lys-63'-linked polyubiquitination. 'Lys-48'-linked polyubiquitination leads to its degradation by the proteasome, while 'Lys-63'-linked polyubiquitination stabilizes and activates it.
細胞内局在	Cytoplasm.

画像



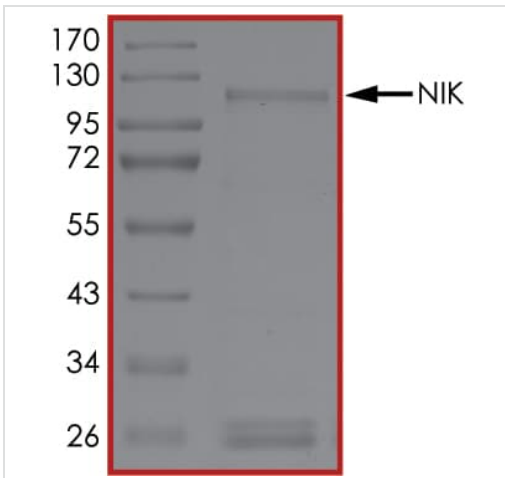
The specific activity of NFkB Inducing Kinase NIK (ab105210) was determined to be 5.5 nmol/min/mg as per activity assay protocol and was equivalent to 7.1 nmol/min/mg as per radiometric assay

Functional Studies - Recombinant human NFkB
Inducing Kinase NIK protein (ab105210)



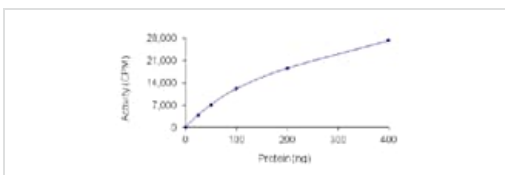
SDS PAGE analysis of ab105210

SDS-PAGE - Recombinant human NFkB Inducing Kinase NIK protein (ab105210)



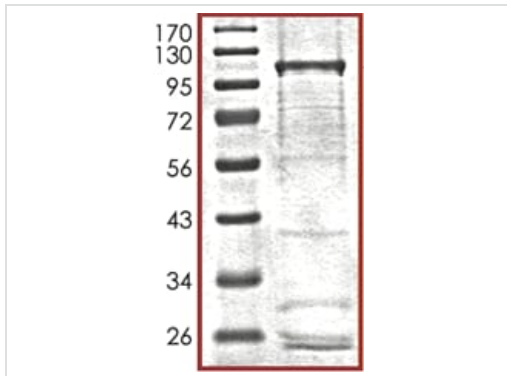
SDS PAGE analysis of ab105210

SDS-PAGE - Recombinant human NFkB Inducing Kinase NIK protein (ab105210)



The Specific activity of ab105210 was determined to be 8 nmol/min/mg.

Functional Studies - Recombinant human NFkB Inducing Kinase NIK protein (ab105210)



SDS-PAGE showing ab105210 at approximately 108kDa.

SDS-PAGE - Recombinant human NFkB Inducing Kinase NIK protein (ab105210)

Please note: All products are "FOR RESEARCH USE ONLY. NOT FOR USE IN DIAGNOSTIC PROCEDURES"

Our Abpromise to you: Quality guaranteed and expert technical support

- Replacement or refund for products not performing as stated on the datasheet
- Valid for 12 months from date of delivery
- Response to your inquiry within 24 hours
- We provide support in Chinese, English, French, German, Japanese and Spanish
- Extensive multi-media technical resources to help you
- We investigate all quality concerns to ensure our products perform to the highest standards

If the product does not perform as described on this datasheet, we will offer a refund or replacement. For full details of the Abpromise, please visit <https://www.abcam.co.jp/abpromise> or contact our technical team.

Terms and conditions

- Guarantee only valid for products bought direct from Abcam or one of our authorized distributors