

# Recombinant Human NFE2 protein ab117042

画像数 1

### 製品の詳細

製品名	Recombinant Human NFE2 protein
発現系	Wheat germ
アクセッション番号	<b><u>Q16621</u></b>
タンパク質長	Full length protein
Animal free	No
由来	Recombinant
生物種	Human
配列	MSPCPPQSRNRVIQLSTSELGEMELTWQEIMSITELQGLNA PSEPSFEP QAPAPYLGPPPPTTYCPCSIHPDSGFPLPPPPYELPASTSHV PDPPYSYG NMAIPVSKPLSLSGLLSEPLQDPLALLDIGLPAGPPKPQEDP ESDSGLSL NYSDAESLELEGTEAGRRRSEYVEMYPVEYPYSLMPNSLAHS NYTLPAAE TPLALEPSSGPVRAKPTARGEAGSRDERRALAMKIPFPTDKI VNLPVDDF NELLARYPLTESQLALVRDIRRRGKNKVAAQNCRRKLETIV QLERELE LTNERERLLRARGEADRTLEVMRQQLTELYRDI FQHLRDESG NSYSPEEY ALQQAADGTIFLVPRGTKMEATD
予測される分子量	67 kDa including tags
領域	1 to 373

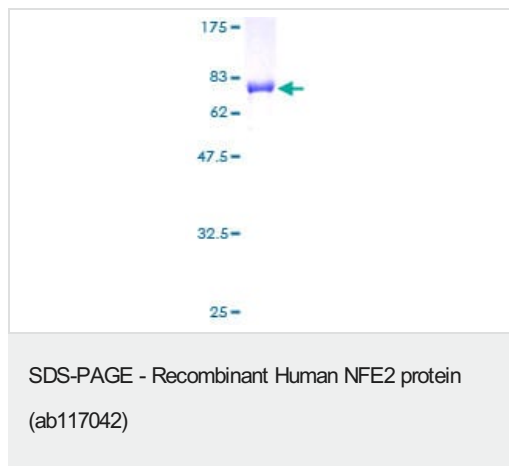
### 特性

Our **Abpromise guarantee** covers the use of **ab117042** in the following tested applications.

The application notes include recommended starting dilutions; optimal dilutions/concentrations should be determined by the end user.

アプリケーション	ELISA
	SDS-PAGE
	Western blot
製品の状態	Liquid

備考	This product was previously labelled as Nuclear Factor Erythroid Derived 2.
前処理および保存	
保存方法および安定性	<p>Shipped on dry ice. Upon delivery aliquot and store at -80°C. Avoid freeze / thaw cycles.</p> <p>pH: 8.00</p> <p>Constituents: 0.3% Glutathione, 0.79% Tris HCl</p>
関連情報	
機能	<p>Component of the NF-E2 complex essential for regulating erythroid and megakaryocytic maturation and differentiation. Binds to the hypersensitive site 2 (HS2) of the beta-globin control region (LCR). This subunit (NFE2) recognizes the TCAT/C sequence of the AP-1-like core palindrome present in a number of erythroid and megakaryocytic gene promoters. Requires MAFK or other small MAF proteins for binding to the NF-E2 motif. May play a role in all aspects of hemoglobin production from globin and heme synthesis to procurement of iron.</p>
組織特異性	Expressed in hematopoietic cells and also in colon and testis.
配列類似性	<p>Belongs to the bZIP family. CNC subfamily.</p> <p>Contains 1 bZIP domain.</p>
ドメイン	The PXY motifs are required for binding WW domains. PXY1 is required to promote transactivation of beta-globin and for hyperacetylation of histone H3, but not for binding to the HS2 promoter site.
翻訳後修飾	<p>Phosphorylated on serine residues (By similarity). In undifferentiated erythrocytes, phosphorylated by MAPK8 which then leads to ubiquitination and protein degradation.</p> <p>Sumoylated. Sumoylation is required for translocation to nuclear bodies PODs, anchoring to the gene loci, and transactivation of the beta-globin gene.</p> <p>Ubiquitinated mainly by 'Lys63'-linked ubiquitin. Polyubiquitination with 'Lys63'-linked ubiquitin by ITCH retains NFE2 in the cytoplasm preventing its transactivation activity. In undifferentiated erythrocyte, ubiquitinated after MAPK8-mediated phosphorylation leading to protein degradation.</p>
細胞内局在	Nucleus > PML body. Cytoplasm. The sumoylated form locates to the nuclear bodies PML oncogenic domains (PODs). Translocated to the cytoplasm through interaction with ITCH.
画像	



12.5% SDS-PAGE stained with Coomassie Blue showing ab117042 at approximately 66.77 kDa.

**Please note:** All products are "FOR RESEARCH USE ONLY. NOT FOR USE IN DIAGNOSTIC PROCEDURES"

### Our Abpromise to you: Quality guaranteed and expert technical support

---

- Replacement or refund for products not performing as stated on the datasheet
- Valid for 12 months from date of delivery
- Response to your inquiry within 24 hours
- We provide support in Chinese, English, French, German, Japanese and Spanish
- Extensive multi-media technical resources to help you
- We investigate all quality concerns to ensure our products perform to the highest standards

If the product does not perform as described on this datasheet, we will offer a refund or replacement. For full details of the Abpromise, please visit <https://www.abcam.co.jp/abpromise> or contact our technical team.

### Terms and conditions

---

- Guarantee only valid for products bought direct from Abcam or one of our authorized distributors