

### Recombinant human NEK6 protein ab60698

画像数 4

#### 製品の詳細

|             |  |
|-------------|--|
| 製品名         | Recombinant human NEK6 protein   |
| 精製度         | > 90 % SDS-PAGE.<br>Purity: >90% as determined by densitometry. Affinity purified. |
| 発現系         | Baculovirus infected Sf9 cells   |
| タンパク質長      | Full length protein  |
| Animal free | No   |
| 由来          | Recombinant  |
| 生物種         | Human  |

#### 特性

Our **Abpromise guarantee** covers the use of **ab60698** in the following tested applications.

The application notes include recommended starting dilutions; optimal dilutions/concentrations should be determined by the end user.

|          |  |
|----------|--|
| アプリケーション | SDS-PAGE<br>Functional Studies   |
| 製品の状態    | Liquid   |
| 備考       | <b>ab64311</b> (Myelin Basic Protein protein) can be utilized as a substrate for assessing kinase activity |

#### 前処理および保存

|            |  |
|------------|--|
| 保存方法および安定性 | Shipped on dry ice. Upon delivery aliquot and store at -80°C. Avoid freeze / thaw cycles.<br>pH: 7.50<br>Constituents: 0.0038% EGTA, 0.00174% PMSF, 0.00385% DTT, 0.79% Tris HCl, 0.00292% EDTA, 25% Glycerol (glycerin, glycerine), 0.87% Sodium chloride<br>This product is an active protein and may elicit a biological response in vivo, handle with caution. |
|------------|--|

#### 関連情報

|    |   |
|----|---|
| 機能 | Activated during M phase. Required for chromosome segregation at metaphase-anaphase |
|----|---|

transition and therefore for mitotic progression. Inhibition of activity results in apoptosis.  
Phosphorylates KIF11 to promote mitotic spindle formation.

**組織特異性**

Ubiquitous, with highest expression in heart and skeletal muscle.

**配列類似性**

Belongs to the protein kinase superfamily. NEK Ser/Thr protein kinase family. NIMA subfamily.  
Contains 1 protein kinase domain.

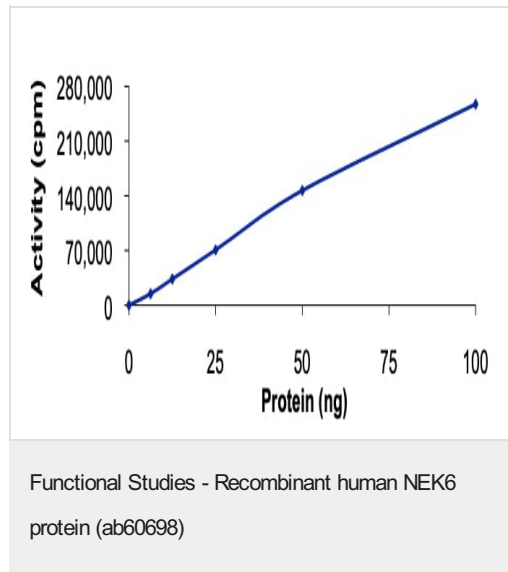
**翻訳後修飾**

Autophosphorylated.

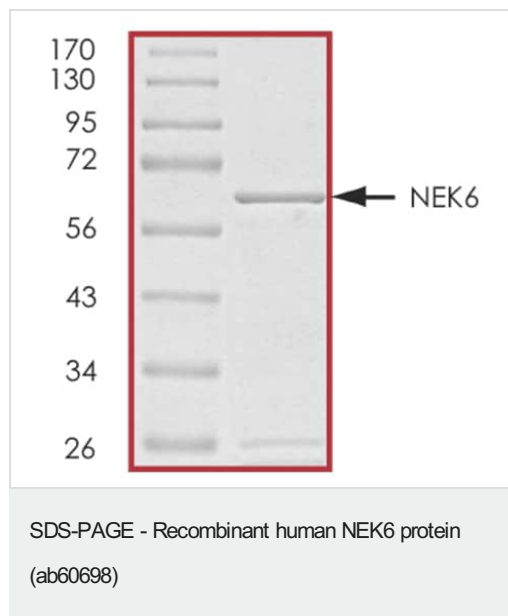
**細胞内局在**

Cytoplasm. Nucleus.

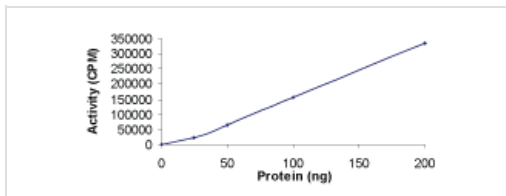
**画像**



The specific activity of NEK6 (ab60698) was determined to be 121 nmol/min/mg as per activity assay protocol

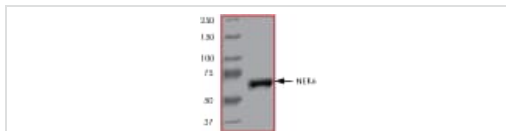


SDS PAGE analysis of ab60698



Sample Kinase Activity Plot.

Functional Studies - Recombinant human NEK6 protein (ab60698)



ab60698 on SDS-PAGE, MW ~63kDa.

SDS-PAGE - Recombinant human NEK6 protein (ab60698)

**Please note:** All products are "FOR RESEARCH USE ONLY. NOT FOR USE IN DIAGNOSTIC PROCEDURES"

### Our Abpromise to you: Quality guaranteed and expert technical support

- Replacement or refund for products not performing as stated on the datasheet
- Valid for 12 months from date of delivery
- Response to your inquiry within 24 hours
- We provide support in Chinese, English, French, German, Japanese and Spanish
- Extensive multi-media technical resources to help you
- We investigate all quality concerns to ensure our products perform to the highest standards

If the product does not perform as described on this datasheet, we will offer a refund or replacement. For full details of the Abpromise, please visit <https://www.abcam.co.jp/abpromise> or contact our technical team.

### Terms and conditions

- Guarantee only valid for products bought direct from Abcam or one of our authorized distributors