

Recombinant human NDRG1 protein ab87685

画像数 1

製品の詳細

製品名	Recombinant human NDRG1 protein
生理活性	<p>The ED50 for this effect is 0.5 - 1.5 ng/ml. Measured in a cell proliferation assay using MCF7 cell.</p> <p>Activity Assay</p> <p>Cell line: MCF7 (Human breast adenocarcinoma cell)</p> <p>Maintenance Condition: RPMI 1640 containing 10% FBS</p> <p>Assay medium: serum free RPMI 1640</p> <p>Cell density: 2 x 104 cells/well (96 well plate, final volume 100ul)</p> <p>Incubation time : 40 hrs (after sample treatment)</p> <p>Concentration range: 0.19ng/ml - 50ng/ml</p> <p>Detection method : BrdU assay</p>
精製度	<p>> 95 % SDS-PAGE.</p> <p>ab87685 is purified using conventional chromatography.</p>
発現系	Escherichia coli
タンパク質長	Full length protein
Animal free	No
由来	Recombinant
生物種	Human
配列	<div>MSREMQDVDL AEVKPLVEKG ETITGLLQEF</div> <div>DVQEQDIETL HGSVHVTLCG TPKGNRPVIL</div> <div>TYHDIGMNHK TCYNPLFNYE DMQEITQHFA</div> <div>VCHVDAPGQQ DGAASFPAGY MYPSMDQLAE</div> <div>MLPGVLQQFG LKSIIGMTG AGAYILTRFA</div> <div>LNNPEMVEGL VLINVNPCE GWMDDWAASKI</div> <div>SGWTQALPDM VVSHLFGKEE MQSNVEVVHT</div> <div>YRQHIVNDMN PGNLHLFINA YNSRRDLEIE</div> <div>RPMPGTHTVT LQCPALLVVG DSSPAVDAVV</div> <div>ECNSKLDPTK TTLLKMADCG GLPQISQPAK</div> <div>LAEAFKYFVQ GMGYMPSASM TRLMRSRTAS</div> <div>GSSVTSLDGT RSRSHTSEGT RSRSHTSEGT</div> <div>RSRSHTSEGA HLDITPNSGA AGNSAGPKSM</div> <div>EVSCLEHHHH HH</div>

特性

Our **Abpromise guarantee** covers the use of **ab87685** in the following tested applications.

The application notes include recommended starting dilutions; optimal dilutions/concentrations should be determined by the end user.

アプリケーション	SDS-PAGE
質量分析	MALDI-TOF
製品の状態	Liquid

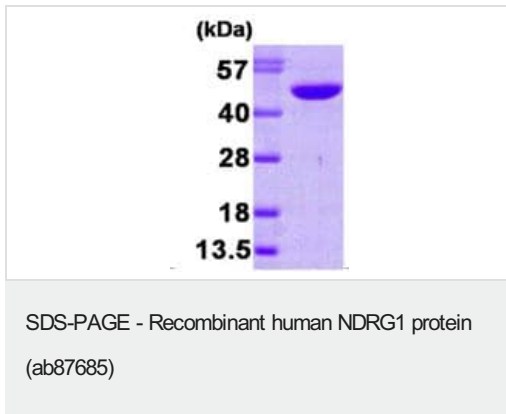
前処理および保存

保存方法および安定性	<p>Shipped at 4°C. Upon delivery aliquot and store at -20°C or -80°C. Avoid repeated freeze / thaw cycles.</p> <p>pH: 8.00</p> <p>Constituents: 0.00174% PMSF, 0.316% Tris HCl, 10% Glycerol (glycerin, glycerine)</p> <p>This product is an active protein and may elicit a biological response in vivo, handle with caution.</p>
------------	--

関連情報

機能	May have a growth inhibitory role.
組織特異性	Ubiquitous; expressed most prominently in placental membranes and prostate, kidney, small intestine, and ovary tissues. Reduced expression in adenocarcinomas compared to normal tissues. In colon, prostate and placental membranes, the cells that border the lumen show the highest expression.
関連疾患	<p>Defects in NDRG1 are the cause of Charcot-Marie-Tooth disease type 4D (CMT4D) [MIM:601455]; also known as hereditary motor and sensory neuropathy Lom type (HMSNL). CMT4D is a recessive form of Charcot-Marie-Tooth disease, the most common inherited disorder of the peripheral nervous system. Charcot-Marie-Tooth disease is classified in two main groups on the basis of electrophysiologic properties and histopathology: primary peripheral demyelinating neuropathy and primary peripheral axonal neuropathy. Demyelinating CMT neuropathies are characterized by severely reduced nerve conduction velocities (less than 38 m/sec), segmental demyelination and remyelination with onion bulb formations on nerve biopsy, slowly progressive distal muscle atrophy and weakness, absent deep tendon reflexes, and hollow feet. By convention, autosomal recessive forms of demyelinating Charcot-Marie-Tooth disease are designated CMT4.</p>
配列類似性	Belongs to the NDRG family.
細胞内局在	Cytoplasm. Nucleus. Cell membrane. Whereas in prostate epithelium and placental chorion it is located in both the cytoplasm and the nucleus, nuclear staining is not observed in colon epithelium cells. Instead its localization changes from the cytoplasm to the plasma membrane during differentiation of colon carcinoma cell lines in vitro.

画像



SDS-PAGE analysis of ab87685.

Please note: All products are "FOR RESEARCH USE ONLY. NOT FOR USE IN DIAGNOSTIC PROCEDURES"

Our Abpromise to you: Quality guaranteed and expert technical support

- Replacement or refund for products not performing as stated on the datasheet
- Valid for 12 months from date of delivery
- Response to your inquiry within 24 hours
- We provide support in Chinese, English, French, German, Japanese and Spanish
- Extensive multi-media technical resources to help you
- We investigate all quality concerns to ensure our products perform to the highest standards

If the product does not perform as described on this datasheet, we will offer a refund or replacement. For full details of the Abpromise, please visit <https://www.abcam.co.jp/abpromise> or contact our technical team.

Terms and conditions

- Guarantee only valid for products bought direct from Abcam or one of our authorized distributors