

# Recombinant human Myosin light chain kinase/MLCK protein ab55674

**1 References**   **画像数 3**

### 製品の詳細

製品名	Recombinant human Myosin light chain kinase/MLCK protein
生理活性	Specific Activity: 200nm/min/mg.
精製度	> 95 % Densitometry. Affinity purified.
発現系	Insect cells
タンパク質長	Protein fragment
Animal free	No
由来	Recombinant
生物種	Human
領域	1425 to 1776
タグ	GST tag N-Terminus

### 特性

Our **Abpromise guarantee** covers the use of **ab55674** in the following tested applications.

The application notes include recommended starting dilutions; optimal dilutions/concentrations should be determined by the end user.

アプリケーション	SDS-PAGE Functional Studies
製品の状態	Liquid
備考	<b>ab60014</b> (Mouse MYL9 full length protein) can be utilized as a substrate for assessing Kinase activity Previously labelled as Myosin light chain kinase.

### 前処理および保存

保存方法および安定性	Shipped on dry ice. Upon delivery aliquot and store at -80°C. Avoid freeze / thaw cycles. pH: 7.50 Constituents: 0.0038% EGTA, 0.00174% PMSF, 0.00385% DTT, 0.79% Tris HCl, 0.00292%
------------	--

EDTA, 25% Glycerol (glycerin, glycerine), 0.87% Sodium chloride

This product is an active protein and may elicit a biological response in vivo, handle with caution.

## 関連情報

### 機能

Calcium/calmodulin-dependent enzyme implicated in smooth muscle contraction via phosphorylation of myosin light chains (MLC). Also regulates actin-myosin interaction through a non-kinase activity (By similarity). Implicated in the regulation of endothelial as well as vascular permeability. In the nervous system it has been shown to control the growth initiation of astrocytic processes in culture and to participate in transmitter release at synapses formed between cultured sympathetic ganglion cells. Critical participant in signaling sequences that result in fibroblast apoptosis.

### 組織特異性

Smooth muscle and non-muscle isozymes are expressed in a wide variety of adult and fetal tissues and in cultured endothelium with qualitative expression appearing to be neither tissue- nor development-specific. Non-muscle isoform 2 is the dominant splice variant expressed in various tissues. Telokin has been found in a wide variety of adult and fetal tissues.

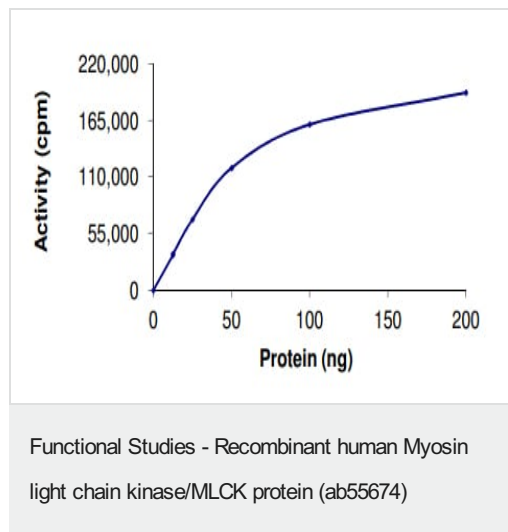
### 配列類似性

Belongs to the protein kinase superfamily. CAMK Ser/Thr protein kinase family.  
Contains 1 fibronectin type-III domain.  
Contains 9 Ig-like C2-type (immunoglobulin-like) domains.  
Contains 1 protein kinase domain.

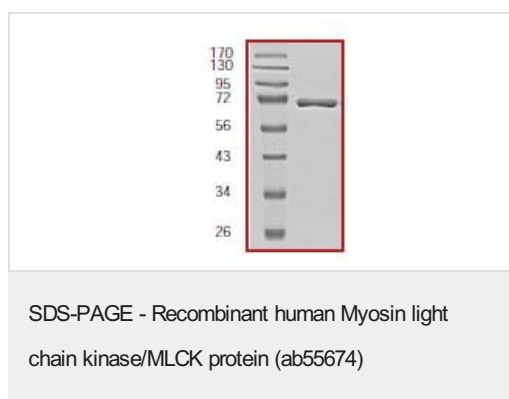
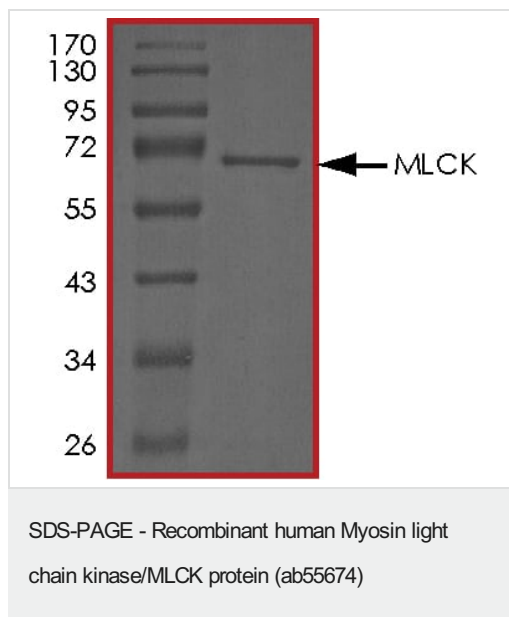
### 翻訳後修飾

MLCK is probably down-regulated by phosphorylation.  
The C-terminus is deglutamyated by AGTPBP1/CCP1, AGBL1/CCP4 and AGBL4/CCP6, leading to the formation of Myosin light chain kinase, smooth muscle, deglutamyated form. The consequences of C-terminal deglutamylation are unknown.

## 画像



The specific activity of Myosin light chain kinase/MLCK (ab55674) was determined to be 180 nmol/min/mg as per activity assay protocol



**Please note:** All products are "FOR RESEARCH USE ONLY. NOT FOR USE IN DIAGNOSTIC PROCEDURES"

### Our Abpromise to you: Quality guaranteed and expert technical support

- Replacement or refund for products not performing as stated on the datasheet
- Valid for 12 months from date of delivery
- Response to your inquiry within 24 hours
- We provide support in Chinese, English, French, German, Japanese and Spanish
- Extensive multi-media technical resources to help you
- We investigate all quality concerns to ensure our products perform to the highest standards

If the product does not perform as described on this datasheet, we will offer a refund or replacement. For full details of the Abpromise, please visit <https://www.abcam.co.jp/abpromise> or contact our technical team.

## Terms and conditions

---

- Guarantee only valid for products bought direct from Abcam or one of our authorized distributors