

Recombinant Human Myosin Light Chain 2 protein ab79185

画像数 2

製品の詳細

製品名	Recombinant Human Myosin Light Chain 2 protein
精製度	> 95 % SDS-PAGE. ab79185 is purified using conventional chromatography techniques.
エンドキシン・レベル	< 1.000 Eu/μg
発現系	Escherichia coli
アクセッション番号	P10916
タンパク質長	Full length protein
Animal free	No
由来	Recombinant
生物種	Human
配列	MGSSHHHHHH SGLVPRGSH MAPKKAKKRA GGANSNVFSM FEQTQIQEFK EAFTIMDQNR DGFIDKNDLR DTFAALGRVN VKNEEIDEMI KEAPGPINFT VFLTMFGEKL KGADPEETIL NAFKVFDPEG KGVLKADYVR EMLTTQAERF SKEEVDQMFA AFPPDVTGNL DYKNLVHIIT HGEEKD
予測される分子量	21 kDa
領域	1 to 166
タグ	His tag N-Terminus

特性

Our **Abpromise guarantee** covers the use of **ab79185** in the following tested applications.

The application notes include recommended starting dilutions; optimal dilutions/concentrations should be determined by the end user.

アプリケーション	SDS-PAGE Western blot
製品の状態	Liquid

前処理および保存

保存方法および安定性 Shipped at 4°C. Upon delivery aliquot and store at -20°C. Avoid freeze / thaw cycles.

pH: 8.00

Constituents: 0.0555% Calcium chloride, 0.242% Tris, 40% Glycerol (glycerin, glycerine)

関連情報

関連疾患

Defects in MYL2 are the cause of cardiomyopathy familial hypertrophic type 10 (CMH10) [MIM:608758]. Familial hypertrophic cardiomyopathy is a hereditary heart disorder characterized by ventricular hypertrophy, which is usually asymmetric and often involves the interventricular septum. The symptoms include dyspnea, syncope, collapse, palpitations, and chest pain. They can be readily provoked by exercise. The disorder has inter- and intrafamilial variability ranging from benign to malignant forms with high risk of cardiac failure and sudden cardiac death. Defects in MYL2 are the cause of cardiomyopathy familial hypertrophic with mid-left ventricular chamber type 2 (MVC2) [MIM:608758]. MVC2 is a very rare variant of familial hypertrophic cardiomyopathy, characterized by mid-left ventricular chamber thickening.

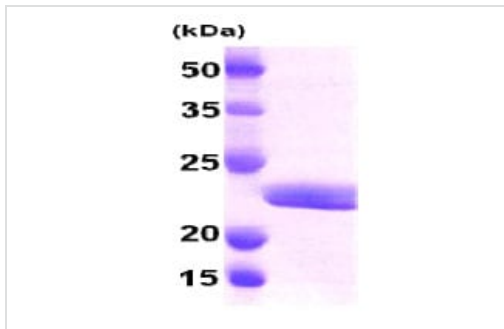
配列類似性

Contains 3 EF-hand domains.

翻訳後修飾

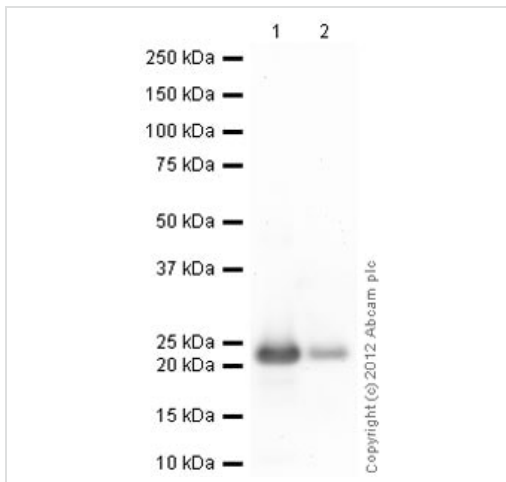
N-terminus is methylated by METTL11A/NTM1.

画像



15% SDS-PAGE showing ab79185 at approximately 21kDa (3 μ g).

SDS-PAGE - Recombinant Human Myosin Light
Chain 2 protein (ab79185)



Western blot - Recombinant Human Myosin Light Chain 2 protein (ab79185)

Please note: All products are "FOR RESEARCH USE ONLY. NOT FOR USE IN DIAGNOSTIC PROCEDURES"

Our Abpromise to you: Quality guaranteed and expert technical support

- Replacement or refund for products not performing as stated on the datasheet
- Valid for 12 months from date of delivery
- Response to your inquiry within 24 hours

- We provide support in Chinese, English, French, German, Japanese and Spanish
- Extensive multi-media technical resources to help you
- We investigate all quality concerns to ensure our products perform to the highest standards

If the product does not perform as described on this datasheet, we will offer a refund or replacement. For full details of the Abpromise, please visit <https://www.abcam.co.jp/abpromise> or contact our technical team.

Terms and conditions

- Guarantee only valid for products bought direct from Abcam or one of our authorized distributors