

Product datasheet

Recombinant Human Mucin 5AC protein (Tagged) ab114218

画像数 1

製品の詳細

製品名	Recombinant Human Mucin 5AC protein (Tagged)
発現系	Wheat germ
アクセッション番号	P98088
タンパク質長	Protein fragment
Animal free	No
由来	Recombinant
生物種	Human
配列	NQSTCAVYHRSLIIQQGCSSEPVRLAYCRGNCGDSSSMYS LEGNTVEH RCQCCQELRTSLRNVTLHCTDGSSRAFSYTEVEECGCMGRRC PAPGDTQH
領域	5528 to 5627
タグ	GST tag N-Terminus

特性

Our **Abpromise guarantee** covers the use of **ab114218** in the following tested applications.

The application notes include recommended starting dilutions; optimal dilutions/concentrations should be determined by the end user.

アプリケーション	ELISA SDS-PAGE Western blot
製品の状態	Liquid

備考

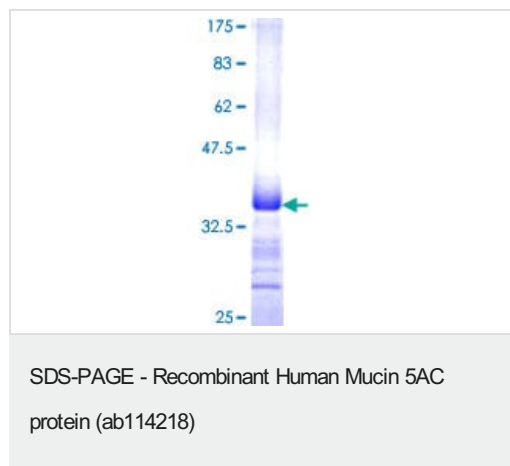
前処理および保存

保存方法および安定性	Shipped on dry ice. Upon delivery aliquot and store at -80°C. Avoid freeze / thaw cycles. pH: 8.00 Constituents: 0.3% Glutathione, 0.79% Tris HCl
------------	---

関連情報

機能	Gel-forming glycoprotein of gastric and respiratory tract epithelia that protects the mucosa from infection and chemical damage by binding to inhaled microorganisms and particles that are subsequently removed by the mucociliary system.
組織特異性	Highly expressed in surface mucosal cells of respiratory tract and stomach epithelia. Overexpressed in a number of carcinomas. Also expressed in Barrett's esophagus epithelium and in the proximal duodenum.
配列類似性	Contains 1 CTCK (C-terminal cystine knot-like) domain. Contains 3 TIL (trypsin inhibitory-like) domains. Contains 4 VWFC domains. Contains 4 VWFD domains.
ドメイン	The cysteine residues in the Cys-rich subdomain repeats are not involved in disulfide bonding.
翻訳後修飾	C-, O- and N-glycosylated. O-glycosylated on the Thr-/Ser-rich tandem repeats. C-mannosylation in the Cys-rich subdomains may be required for proper folding of these regions and for export from the endoplasmic reticulum during biosynthesis. Proteolytic cleavage in the C-terminal is initiated early in the secretory pathway and does not involve a serine protease. The extent of cleavage is increased in the acidic parts of the secretory pathway. Cleavage generates a reactive group which could link the protein to a primary amide.
細胞内局在	Secreted.

画像



ab114218 analysed on a 12.5% SDS-PAGE gel stained with Coomassie Blue.

Please note: All products are "FOR RESEARCH USE ONLY. NOT FOR USE IN DIAGNOSTIC PROCEDURES"

Our Abpromise to you: Quality guaranteed and expert technical support

- Replacement or refund for products not performing as stated on the datasheet
- Valid for 12 months from date of delivery
- Response to your inquiry within 24 hours
- We provide support in Chinese, English, French, German, Japanese and Spanish

- Extensive multi-media technical resources to help you
- We investigate all quality concerns to ensure our products perform to the highest standards

If the product does not perform as described on this datasheet, we will offer a refund or replacement. For full details of the Abpromise, please visit <https://www.abcam.co.jp/abpromise> or contact our technical team.

Terms and conditions

- Guarantee only valid for products bought direct from Abcam or one of our authorized distributors