

Recombinant human MSK1 protein ab84805

画像数 5

製品の詳細

製品名	Recombinant human MSK1 protein
生理活性	The Specific activity of ab84805 was determined to be 89 nmol/min/mg.
精製度	> 90 % Densitometry. Affinity purified.
発現系	Baculovirus infected Sf9 cells
タンパク質長	Full length protein
Animal free	No
由来	Recombinant
生物種	Human
タグ	GST tag N-Terminus

特性

Our **Abpromise guarantee** covers the use of **ab84805** in the following tested applications.

The application notes include recommended starting dilutions; optimal dilutions/concentrations should be determined by the end user.

アプリケーション	SDS-PAGE Western blot Functional Studies
製品の状態	Liquid
備考	ab204879 (RPS6 peptide) can be utilized as a substrate for assessing kinase activity

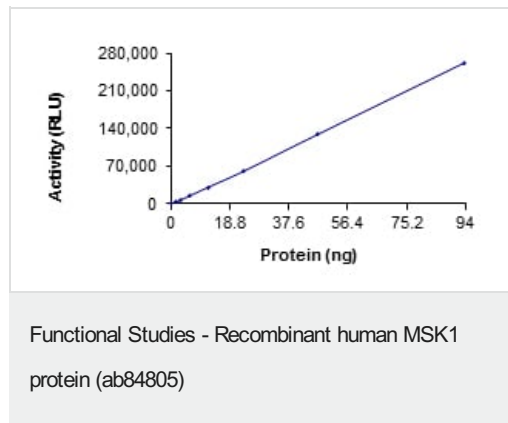
前処理および保存

保存方法および安定性	Shipped on dry ice. Upon delivery aliquot and store at -80°C. Avoid freeze / thaw cycles. pH: 7.50 Constituents: 0.0038% EGTA, 0.00174% PMSF, 0.00385% DTT, 0.79% Tris HCl, 0.00292% EDTA, 25% Glycerol (glycerin, glycerine), 0.87% Sodium chloride This product is an active protein and may elicit a biological response in vivo, handle with caution.
------------	--

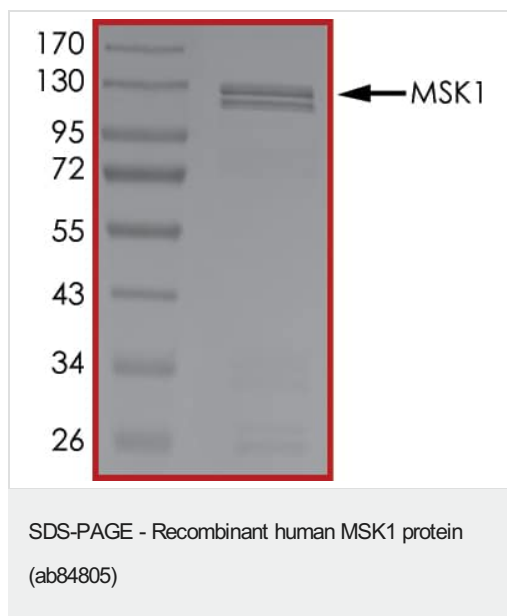
関連情報

機能	<p>Serine/threonine kinase required for the mitogen or stress-induced phosphorylation of the transcription factors CREB (cAMP response element-binding protein) and ATF1 (activating transcription factor-1). Essential role in the control of RELA transcriptional activity in response to TNF. Directly represses transcription via phosphorylation of 'Ser-1' of histone H2A. Phosphorylates 'Ser-10' of histone H3 in response to mitogenics, stress stimuli and epidermal growth-factor (EGF), which results in the transcriptional activation of several immediate early genes, including proto-oncogenes c-fos/FOS and c-jun/JUN. May also phosphorylate 'Ser-28' of histone H3. Mediates the mitogen- and stress-induced phosphorylation of high mobility group protein 14 (HMG-14).</p>
組織特異性	<p>Widely expressed with high levels in heart, brain and placenta. Less abundant in lung, kidney and liver.</p>
配列類似性	<p>Belongs to the protein kinase superfamily. AGC Ser/Thr protein kinase family. S6 kinase subfamily.</p> <p>Contains 1 AGC-kinase C-terminal domain.</p> <p>Contains 2 protein kinase domains.</p>
翻訳後修飾	<p>Ser-376 and Thr-581 phosphorylation is required for kinase activity. Ser-376 and Ser-212 are autophosphorylated by the C-terminal kinase domain, and their phosphorylation is essential for the catalytic activity of the N-terminal kinase domain.</p>
細胞内局在	<p>Nucleus. Cytoplasm. Predominantly nuclear. Partially cytoplasmic.</p>

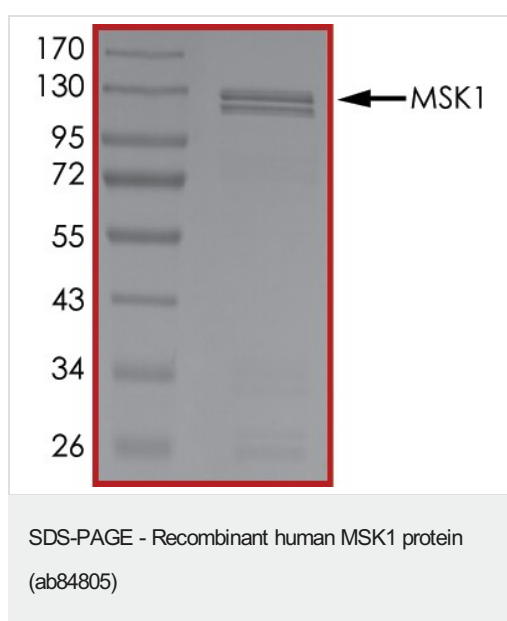
画像



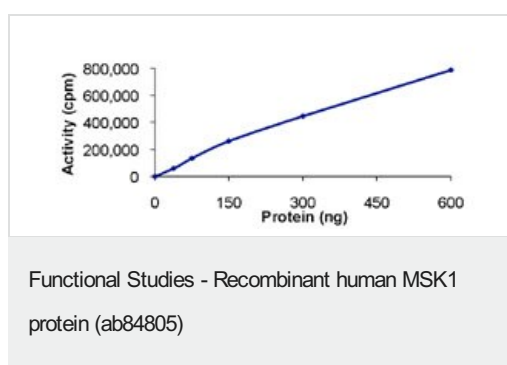
The specific activity of MSK1 (ab84805) was determined to be 9.9 nmol/min/mg as per activity assay protocol and was equivalent to 75 nmol/min/mg as per radiometric assay



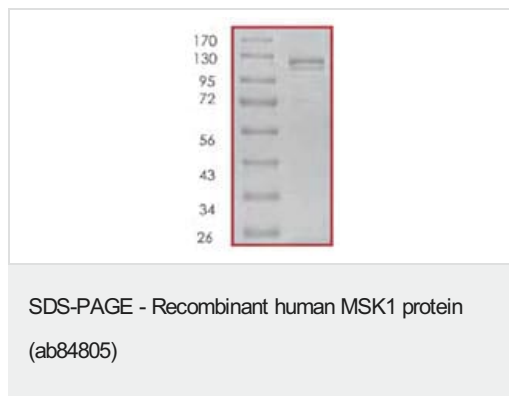
SDS PAGE analysis of ab84805



SDS PAGE analysis of ab84805



The Specific activity of ab84805 was determined to be 89 nmol/min/mg.



SDS-PAGE showing ab84805 at approximately 120kDa.

Please note: All products are "FOR RESEARCH USE ONLY. NOT FOR USE IN DIAGNOSTIC PROCEDURES"

Our Abpromise to you: Quality guaranteed and expert technical support

- Replacement or refund for products not performing as stated on the datasheet
- Valid for 12 months from date of delivery
- Response to your inquiry within 24 hours
- We provide support in Chinese, English, French, German, Japanese and Spanish
- Extensive multi-media technical resources to help you
- We investigate all quality concerns to ensure our products perform to the highest standards

If the product does not perform as described on this datasheet, we will offer a refund or replacement. For full details of the Abpromise, please visit <https://www.abcam.co.jp/abpromise> or contact our technical team.

Terms and conditions

- Guarantee only valid for products bought direct from Abcam or one of our authorized distributors