

Recombinant Human Mre11 protein ab114277

画像数 1

製品の詳細

製品名	Recombinant Human Mre11 protein
発現系	Wheat germ
アクセッション番号	Q9BS79
タンパク質長	Full length protein
Animal free	No
由来	Recombinant
生物種	Human
配列	MSTADALDDENTFKILVATDIHLGFMEKDAVRGNDTFVTLDE ILRLAQEN EVDFILLGGDLFHENKPSRKTLLHTCLELLRKYCMGDRPVQFE ILSDQSVN FGFSKFPWVNYQDGNLNISIPVFSIHGNHDDPTGADALCALD ILSCAGFV NHFGRSMSVEKIDISPVLLQKGRTKIALYGLGSIPDERLYRM FVNKKVTM LRPKED
予測される分子量	49 kDa including tags
領域	1 to 206

特性

Our **Abpromise guarantee** covers the use of **ab114277** in the following tested applications.

The application notes include recommended starting dilutions; optimal dilutions/concentrations should be determined by the end user.

アプリケーション	ELISA SDS-PAGE Western blot
製品の状態	Liquid

前処理および保存

保存方法および安定性	Shipped on dry ice. Upon delivery aliquot and store at -80°C. Avoid freeze / thaw cycles. pH: 8.00
------------	---

Constituents: 0.3% Glutathione, 0.79% Tris HCl

関連情報

機能

Component of the MRN complex, which plays a central role in double-strand break (DSB) repair, DNA recombination, maintenance of telomere integrity and meiosis. The complex possesses single-strand endonuclease activity and double-strand-specific 3'-5' exonuclease activity, which are provided by MRE11A. RAD50 may be required to bind DNA ends and hold them in close proximity. This could facilitate searches for short or long regions of sequence homology in the recombining DNA templates, and may also stimulate the activity of DNA ligases and/or restrict the nuclease activity of MRE11A to prevent nucleolytic degradation past a given point. The complex may also be required for DNA damage signaling via activation of the ATM kinase. In telomeres the MRN complex may modulate t-loop formation.

関連疾患

Defects in MRE11A are a cause of ataxia telangiectasia-like disorder (ATLD) [MIM:604391]. ATLD is a disease with the same clinical feature than ataxia-telangiectasia but with a somewhat milder clinical course.

配列類似性

Belongs to the MRE11/RAD32 family.

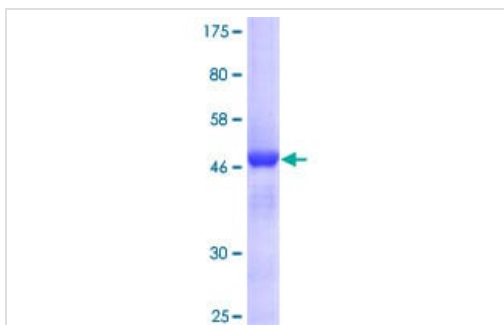
翻訳後修飾

Phosphorylated upon DNA damage, probably by ATM or ATR.

細胞内局在

Nucleus. Localizes to discrete nuclear foci after treatment with genotoxic agents.

画像



12.5% SDS-PAGE analysis of Mre11 protein (ab114277). Stained with Coomassie Blue.

SDS-PAGE - Recombinant Human Mre11 protein
(ab114277)

Please note: All products are "FOR RESEARCH USE ONLY. NOT FOR USE IN DIAGNOSTIC PROCEDURES"

Our Abpromise to you: Quality guaranteed and expert technical support

- Replacement or refund for products not performing as stated on the datasheet
- Valid for 12 months from date of delivery
- Response to your inquiry within 24 hours
- We provide support in Chinese, English, French, German, Japanese and Spanish
- Extensive multi-media technical resources to help you

- We investigate all quality concerns to ensure our products perform to the highest standards

If the product does not perform as described on this datasheet, we will offer a refund or replacement. For full details of the Abpromise, please visit <https://www.abcam.co.jp/abpromise> or contact our technical team.

Terms and conditions

- Guarantee only valid for products bought direct from Abcam or one of our authorized distributors