

Product datasheet

Recombinant Human MHC Class II beta protein (Tagged) ab114224

画像数 1

製品の詳細

製品名	Recombinant Human MHC Class II beta protein (Tagged)
発現系	Wheat germ
アクセッション番号	P04440
タンパク質長	Full length protein
Animal free	No
由来	Recombinant
生物種	Human
配列	MMVLQVSAAPRTVALTALLMVLVLLTSVVQGRATPENIVVYQGRQ ECYAFNGT QRFLERYIYNREEYARFDSVDVGEFRAVTELGPRAAEYWNSQK DILEEKRA VPDRVCRHNYELDEAVTLQRRVQPKVNVSPSKKGPLQHNNLL VCHVTDFY PGSIQVRWFLNGQEETAGVVSTNLIRNGDWTFFQILVMLEMP QQGDVYIC QVEHTSLDSPVTVIEWKAQSDSAQSKTLTGAGGFVLGLIICGV GIFMHRRS KKVQRGSA
予測される分子量	54 kDa including tags
領域	1 to 258
タグ	GST tag N-Terminus

特性

Our **Abpromise guarantee** covers the use of **ab114224** in the following tested applications.

The application notes include recommended starting dilutions; optimal dilutions/concentrations should be determined by the end user.

アプリケーション	ELISA SDS-PAGE Western blot
製品の状態	Liquid

前処理および保存

保存方法および安定性

Shipped on dry ice. Upon delivery aliquot and store at -80°C. Avoid freeze / thaw cycles.

pH: 8.00

Constituents: 0.3% Glutathione, 0.79% Tris HCl

関連情報

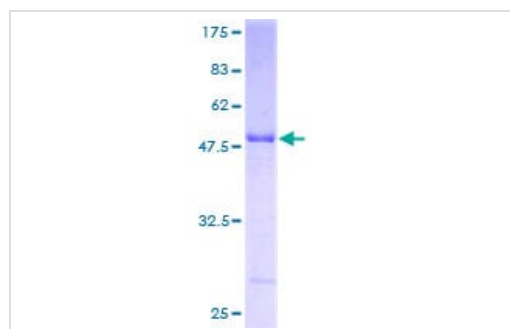
関連性

Major Histocompatibility Class II molecules are primarily expressed on B-cells and antigen presenting cells (APCs). They are composed of two polypeptide chains. These polypeptides (alpha and beta) are about 230 and 240 amino acids long, respectively, and are glycosylated. These polypeptides fold into two separate domains; the non-polymorphic alpha chain and the polymorphic beta chain. The antigen binding region of the molecule is bounded by a beta-pleated sheet on the bottom and two alpha helices on the sides, and is capable of binding (via non-covalent interactions) a small peptide of about 10 amino acids.

細胞内局在

Cell Membrane

画像



ab114224 analysed on a 12.5% SDS-PAGE gel stained with Coomassie Blue.

SDS-PAGE - Recombinant Human MHC Class II beta protein (Tagged) (ab114224)

Please note: All products are "FOR RESEARCH USE ONLY. NOT FOR USE IN DIAGNOSTIC PROCEDURES"

Our Abpromise to you: Quality guaranteed and expert technical support

- Replacement or refund for products not performing as stated on the datasheet
- Valid for 12 months from date of delivery
- Response to your inquiry within 24 hours
- We provide support in Chinese, English, French, German, Japanese and Spanish
- Extensive multi-media technical resources to help you
- We investigate all quality concerns to ensure our products perform to the highest standards

If the product does not perform as described on this datasheet, we will offer a refund or replacement. For full details of the Abpromise, please visit <https://www.abcam.co.jp/abpromise> or contact our technical team.

Terms and conditions

- Guarantee only valid for products bought direct from Abcam or one of our authorized distributors