

### Recombinant human MELK protein ab102551

画像数 5

#### 製品の詳細

製品名	Recombinant human MELK protein
生理活性	The Specific activity of ab102551 was determined to be 200 nmol/min/mg.
精製度	> 85 % Densitometry. Purity was determined to be >85% by densitometry. Affinity purified.
発現系	Baculovirus infected Sf9 cells
アクセッション番号	<b><u>Q14680</u></b>
タンパク質長	Protein fragment
Animal free	No
由来	Recombinant
生物種	Human
予測される分子量	61 kDa including tags
領域	1 to 340

#### 特性

Our **Abpromise guarantee** covers the use of **ab102551** in the following tested applications.

The application notes include recommended starting dilutions; optimal dilutions/concentrations should be determined by the end user.

アプリケーション	Functional Studies SDS-PAGE Western blot
製品の状態	Liquid
備考	<b><u>ab204885</u></b> (ZIP Kinase peptide substrate) can be utilized as a substrate for assessing kinase activity

#### 前処理および保存

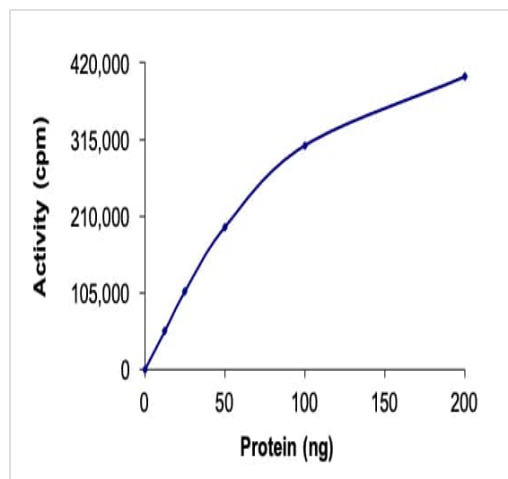
保存方法および安定性	Shipped on dry ice. Upon delivery aliquot and store at -80°C. Avoid freeze / thaw cycles. pH: 7.50 Constituents: 0.307% Glutathione, 0.00174% PMSF, 0.00385% DTT, 0.79% Tris HCl, 0.00292% EDTA, 25% Glycerol (glycerin, glycerine), 0.87% Sodium chloride
------------	--

This product is an active protein and may elicit a biological response in vivo, handle with caution.

## 関連情報

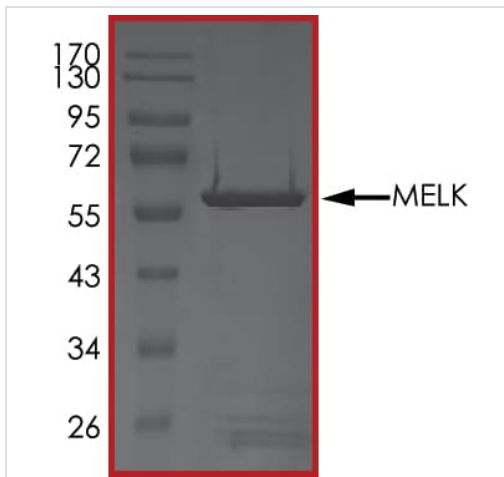
機能	Phosphorylates ZNF622 and may contribute to its redirection to the nucleus. May be involved in the inhibition of spliceosome assembly during mitosis.
組織特異性	Expressed in placenta, kidney, thymus, testis, ovary and intestine.
配列類似性	Belongs to the protein kinase superfamily. CAMK Ser/Thr protein kinase family. SNF1 subfamily. Contains 1 KA1 (kinase-associated) domain. Contains 1 protein kinase domain.
翻訳後修飾	Autophosphorylated. Thr-478 phosphorylation during mitosis promotes interaction with PPP1R8.
細胞内局在	Cytoplasm.

## 画像



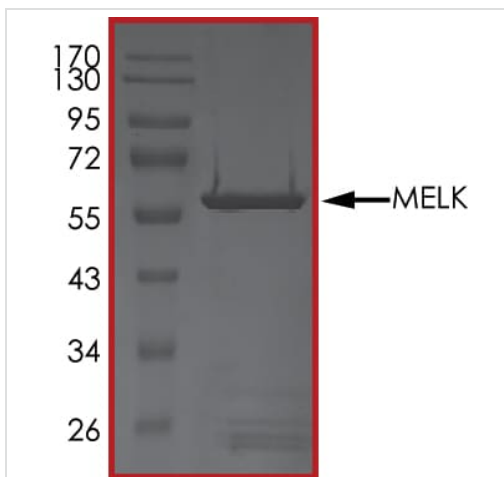
The specific activity of MELK (ab102551) was determined to be 230 nmol/min/mg as per activity assay protocol

Functional Studies - Recombinant human MELK protein (ab102551)



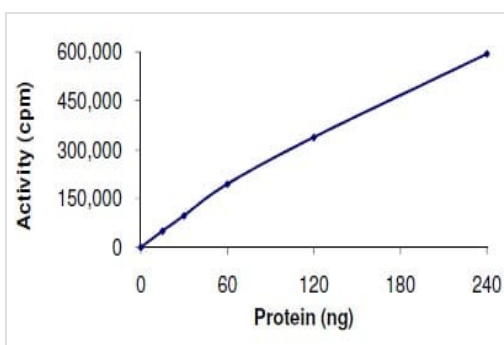
SDS-PAGE - Recombinant human MELK protein  
(ab102551)

SDS PAGE analysis of ab102551



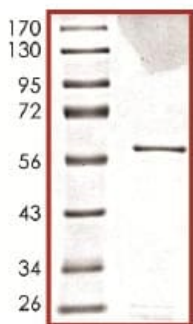
SDS-PAGE - Recombinant human MELK protein  
(ab102551)

SDS PAGE analysis of ab102551



Functional Studies - Recombinant human MELK  
protein (ab102551)

The Specific activity of ab102551 was determined to be 200  
nmol/min/mg.



SDS-PAGE showing ab102551 at approximately 61kDa.

SDS-PAGE - Recombinant human MELK protein  
(ab102551)

**Please note:** All products are "FOR RESEARCH USE ONLY. NOT FOR USE IN DIAGNOSTIC PROCEDURES"

#### Our Abpromise to you: Quality guaranteed and expert technical support

---

- Replacement or refund for products not performing as stated on the datasheet
- Valid for 12 months from date of delivery
- Response to your inquiry within 24 hours
- We provide support in Chinese, English, French, German, Japanese and Spanish
- Extensive multi-media technical resources to help you
- We investigate all quality concerns to ensure our products perform to the highest standards

If the product does not perform as described on this datasheet, we will offer a refund or replacement. For full details of the Abpromise, please visit <https://www.abcam.co.jp/abpromise> or contact our technical team.

#### Terms and conditions

---

- Guarantee only valid for products bought direct from Abcam or one of our authorized distributors