

# Recombinant Human MelanA protein ab114312

1 References [画像数 1](#)

### 製品の詳細

製品名	Recombinant Human MelanA protein
発現系	Wheat germ
アクセッション番号	<b><u>Q16655</u></b>
タンパク質長	Full length protein
Animal free	No
由来	Recombinant
生物種	Human
配列	MPREDAHFIYGYPKKGGHGSYTTAAEEAAGIGILTVILGVLLL IGCWYCRR RNGYRALMDKSLHVGTTQCALTRRCPEGFDRDSKVSLEKN CEPVVPNA PPAYEKLSAEQSPPPYSP
予測される分子量	39 kDa including tags
領域	1 to 118
タグ	GST tag N-Terminus

### 特性

Our **Abpromise guarantee** covers the use of **ab114312** in the following tested applications.

The application notes include recommended starting dilutions; optimal dilutions/concentrations should be determined by the end user.

アプリケーション	SDS-PAGE Western blot ELISA
製品の状態	Liquid
備考	Protein concentration is above or equal to 0.05 mg/mL.

### 前処理および保存

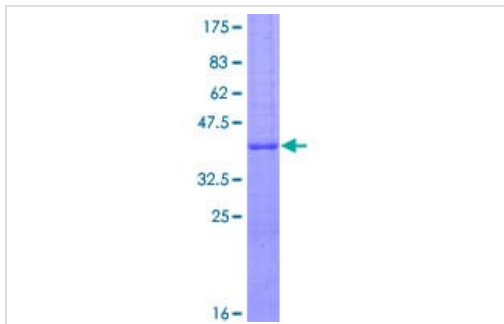
保存方法および安定性	Shipped on dry ice. Upon delivery aliquot and store at -80°C. Avoid freeze / thaw cycles. pH: 8.00
------------	---

Constituents: 0.3% Glutathione, 0.79% Tris HCl

## 関連情報

機能	Involved in melanosome biogenesis by ensuring the stability of GPR143. Plays a vital role in the expression, stability, trafficking, and processing of melanocyte protein PMEL, which is critical to the formation of stage II melanosomes.
組織特異性	Expression is restricted to melanoma and melanocyte cell lines and retina.
翻訳後修飾	Acylated.
細胞内局在	Endoplasmic reticulum membrane. Golgi apparatus. Golgi apparatus > trans-Golgi network membrane. Melanosome. Also found in small vesicles and tubules dispersed over the entire cytoplasm. A small fraction of the protein is inserted into the membrane in an inverted orientation. Inversion of membrane topology results in the relocalization of the protein from a predominant Golgi/post-Golgi area to the endoplasmic reticulum. Melanoma cells expressing the protein with an inverted membrane topology are more effectively recognized by specific cytolytic T-lymphocytes than those expressing the protein in its native membrane orientation.

## 画像



SDS-PAGE analysis of ab114312 on a 12.5% gel stained with Coomassie Blue.

SDS-PAGE - Recombinant Human MelanA protein  
(ab114312)

**Please note:** All products are "FOR RESEARCH USE ONLY. NOT FOR USE IN DIAGNOSTIC PROCEDURES"

## Our Abpromise to you: Quality guaranteed and expert technical support

- Replacement or refund for products not performing as stated on the datasheet
- Valid for 12 months from date of delivery
- Response to your inquiry within 24 hours
- We provide support in Chinese, English, French, German, Japanese and Spanish
- Extensive multi-media technical resources to help you
- We investigate all quality concerns to ensure our products perform to the highest standards

If the product does not perform as described on this datasheet, we will offer a refund or replacement. For full details of the Abpromise, please visit <https://www.abcam.co.jp/abpromise> or contact our technical team.

## Terms and conditions

---

- Guarantee only valid for products bought direct from Abcam or one of our authorized distributors