

Recombinant Human MEF2C protein ab114241

画像数 1

製品の詳細

製品名	Recombinant Human MEF2C protein
発現系	Wheat germ
アクセッション番号	<u>Q06413</u>
タンパク質長	Full length protein
Animal free	No
由来	Recombinant
生物種	Human
配列	<p>MGRKKIQITRIMDERNRQVTFTKRKFGLMKKAYELSVLCDCE IALIIFNS TNKLFQYASTDMDKVLLKYTEYNEQ HESRTNSDIVETLRKKGLNGCDS PDPDADDSVGHSPESSEDKYRKINEDIDLMISRQLCAVPPPN FEMPVSIP VS SHNSLVYSNPVSSLGNPNLLPLAHPQLQRNSMSPGVTHRPPS AGNT GGLMGDLTSGAGTSAGNGYGNPRNSPGL LVSPGNLNKNMQAKSPPPM NLGMNRRKPDRLVLIIPPGSKNTMPVSSEDVDLLNQRINNSQ SAQSLATP VVS VAT PTLPGQGMGGYPSAISTTYGTEYSLSSADLSSLSGFNTASAL HLGSVTGWQQHLHNMQPSALSQLGACTSTHLS QSSNLSLPSTQSLNI KSEPVSPPRDRTTTPSRYPQHTRHEAGRSPVDSLSSCSSSYD GSDREDHR NEFHSPIGLT RPSPDERESPSVKRMRLSE</p>
予測される分子量	78 kDa including tags
領域	1 to 469

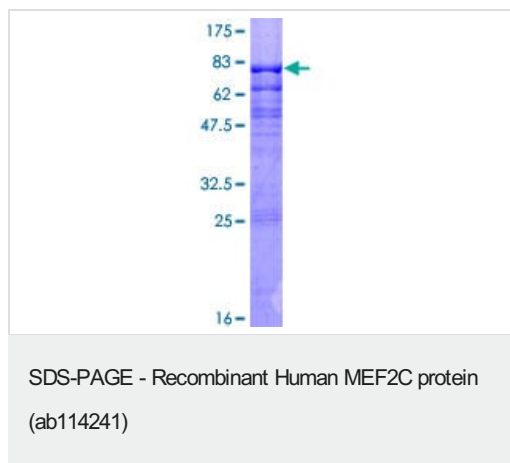
特性

Our **Abpromise guarantee** covers the use of **ab114241** in the following tested applications.

The application notes include recommended starting dilutions; optimal dilutions/concentrations should be determined by the end user.

アプリケーション	ELISA
	SDS-PAGE
	Western blot

製品の状態	Liquid
備考	
前処理および保存	
保存方法および安定性	<p>Shipped on dry ice. Upon delivery aliquot and store at -80°C. Avoid freeze / thaw cycles.</p> <p>pH: 8.00</p> <p>Constituents: 0.3% Glutathione, 0.79% Tris HCl</p>
関連情報	
機能	<p>Transcription activator which binds specifically to the MEF2 element present in the regulatory regions of many muscle-specific genes. Controls cardiac morphogenesis and myogenesis, and is also involved in vascular development. Plays an essential role in hippocampal-dependent learning and memory by suppressing the number of excitatory synapses and thus regulating basal and evoked synaptic transmission. Crucial for normal neuronal development, distribution, and electrical activity in the neocortex. Necessary for proper development of megakaryocytes and platelets and for bone marrow B lymphopoiesis. Required for B-cell survival and proliferation in response to BCR stimulation, efficient IgG1 antibody responses to T-cell-dependent antigens and for normal induction of germinal center B cells. May also be involved in neurogenesis and in the development of cortical architecture (By similarity). Isoform 3 and isoform 4, which lack the repressor domain, are more active than isoform 1 and isoform 2.</p>
組織特異性	Expressed in brain and skeletal muscle.
関連疾患	<p>Defects in MEF2C are the cause of mental retardation-stereotypic movements-epilepsy and/or cerebral malformations (MRSME) [MIM:613443]. It is a disorder characterized by severe mental retardation, absent speech, hypotonia, poor eye contact and stereotypic movements. Dysmorphic features include high broad forehead with variable small chin, short nose with anteverted nares, large open mouth, upslanted palpebral fissures and prominent eyebrows. Some patients have seizures.</p>
配列類似性	<p>Belongs to the MEF2 family.</p> <p>Contains 1 MADS-box domain.</p> <p>Contains 1 Mef2-type DNA-binding domain.</p>
発生段階	Expression is highest during the early stages of postnatal development, at later stages levels greatly decrease.
ドメイン	The beta domain, missing in a number of isoforms, is required for enhancement of transcriptional activity.
翻訳後修飾	<p>Phosphorylation on Ser-59 enhances DNA binding activity (By similarity). Phosphorylation on Ser-396 is required for Lys-391 sumoylation and inhibits transcriptional activity.</p> <p>Acetylated by p300 on several sites in differentiating myocytes. Acetylation on Lys-4 increases DNA binding and transactivation.</p> <p>Sumoylated on Lys-391 by SUMO2 but not by SUMO1 represses transcriptional activity.</p> <p>Proteolytically cleaved in cerebellar granule neurons, probably by caspase 7, following neurotoxicity. Preferentially cleaves the CDK5-mediated hyperphosphorylated form which leads to neuron apoptosis and transcriptional inactivation.</p>
細胞内局在	Nucleus.



12.5% SDS-PAGE showing ab114241 at approximately 77.66kDa stained with Coomassie Blue.

Please note: All products are "FOR RESEARCH USE ONLY. NOT FOR USE IN DIAGNOSTIC PROCEDURES"

Our Abpromise to you: Quality guaranteed and expert technical support

- Replacement or refund for products not performing as stated on the datasheet
- Valid for 12 months from date of delivery
- Response to your inquiry within 24 hours
- We provide support in Chinese, English, French, German, Japanese and Spanish
- Extensive multi-media technical resources to help you
- We investigate all quality concerns to ensure our products perform to the highest standards

If the product does not perform as described on this datasheet, we will offer a refund or replacement. For full details of the Abpromise, please visit <https://www.abcam.co.jp/abpromise> or contact our technical team.

Terms and conditions

- Guarantee only valid for products bought direct from Abcam or one of our authorized distributors