

Recombinant Human MCM7/PRL protein ab114356

画像数 1

製品の詳細

| | |
|-------------|---|
| 製品名 | Recombinant Human MCM7/PRL protein |
| 発現系 | Wheat germ |
| アクセッション番号 | <u>P33993-2</u> |
| タンパク質長 | Full length protein |
| Animal free | No |
| 由来 | Recombinant |
| 生物種 | Human |
| 配列 | MALKDYALEKEKVKKFLQEFYQDDELGKKQFKYGNQLVRLAH REQVALYV DLDDVAEDDPELVDSICENARRYAKLFADAVQELLQYKERE VVNKDVL VYIEHRLMMEQSRDPGMVRSPQNQYPAELMRRFELYFQGGS SSKPRVIR EVRADSVGKLVTVRGIVTRVSEVKPKMVVATYTCDCGAETY QPIQSPTF MPLIMCPSQECQTNRS GGRLYLQTRGSRFIKFQEMKMQEHSD QVPVGNIP RSITVLVEGENTRIAQPGDHVSVTGIFLPILRTGFRQVVQGL LSETYLEA HRIVKMNKSEDDSGAGELTREELRQIADVIFATVRELVSGG RSVRFSEA EQRCVSRGFTPAQFQAALDEYEELNVWQVNASRTRITFV |
| 予測される分子量 | 69 kDa including tags |
| 領域 | 1 to 389 |

特性

Our **Abpromise guarantee** covers the use of **ab114356** in the following tested applications.

The application notes include recommended starting dilutions; optimal dilutions/concentrations should be determined by the end user.

| | |
|----------|--------------|
| アプリケーション | ELISA |
| | Western blot |
| | SDS-PAGE |

製品の状態

Liquid

備考

This product was previously labelled as MCM7.

前処理および保存

保存方法および安定性

Shipped on dry ice. Upon delivery aliquot and store at -80°C. Avoid freeze / thaw cycles.

pH: 8.00

Constituents: 0.3% Glutathione, 0.79% Tris HCl

関連情報

機能

Acts as component of the MCM2-7 complex (MCM complex) which is the putative replicative helicase essential for 'once per cell cycle' DNA replication initiation and elongation in eukaryotic cells. The active ATPase sites in the MCM2-7 ring are formed through the interaction surfaces of two neighboring subunits such that a critical structure of a conserved arginine finger motif is provided in trans relative to the ATP-binding site of the Walker A box of the adjacent subunit. The six ATPase active sites, however, are likely to contribute differentially to the complex helicase activity. Required for S-phase checkpoint activation upon UV-induced damage.

配列類似性

Belongs to the MCM family.

Contains 1 MCM domain.

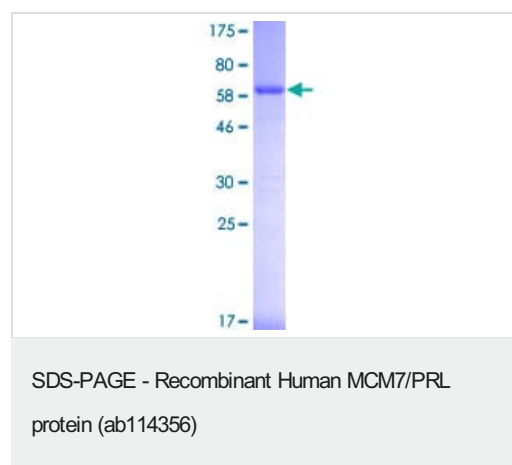
翻訳後修飾

Phosphorylated upon DNA damage, probably by ATM or ATR.

細胞内局在

Nucleus.

画像



ab114356 analysed on a 12.5% SDS-PAGE gel stained with Coomassie Blue.

Please note: All products are "FOR RESEARCH USE ONLY. NOT FOR USE IN DIAGNOSTIC PROCEDURES"

Our Abpromise to you: Quality guaranteed and expert technical support

- Replacement or refund for products not performing as stated on the datasheet

- Valid for 12 months from date of delivery
- Response to your inquiry within 24 hours
- We provide support in Chinese, English, French, German, Japanese and Spanish
- Extensive multi-media technical resources to help you
- We investigate all quality concerns to ensure our products perform to the highest standards

If the product does not perform as described on this datasheet, we will offer a refund or replacement. For full details of the Abpromise, please visit <https://www.abcam.co.jp/abpromise> or contact our technical team.

Terms and conditions

- Guarantee only valid for products bought direct from Abcam or one of our authorized distributors