

Recombinant human MARK2 protein ab119135

画像数 5

カルタヘナ法

製品の詳細

製品名	Recombinant human MARK2 protein
生理活性	Specific Activity: 725 - 795 nmol/min/mg
精製度	> 70 % SDS-PAGE. Purity was determined to be >70% by densitometry. Affinity purified.
発現系	Baculovirus infected Sf9 cells
アクセッション番号	<u>Q7KZ17</u>
タンパク質長	Full length protein
Animal free	No
由来	Recombinant
生物種	Human
予測される分子量	114 kDa including tags
領域	1 to 788

特性

Our **Abpromise guarantee** covers the use of **ab119135** in the following tested applications.

The application notes include recommended starting dilutions; optimal dilutions/concentrations should be determined by the end user.

アプリケーション	SDS-PAGE Western blot Functional Studies
製品の状態	Liquid
備考	<u>ab204854</u> (Cdc25C peptide) can be utilized as a substrate for assessing kinase activity

前処理および保存

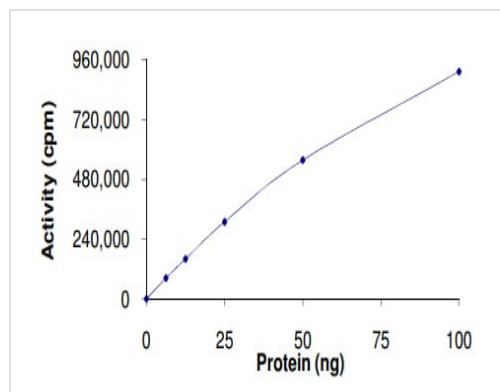
保存方法および安定性	Shipped on dry ice. Upon delivery aliquot and store at -80°C. Avoid freeze / thaw cycles. pH: 7.50 Constituents: 0.31% Glutathione, 0.002% PMSF, 0.004% DTT, 0.79% Tris HCl, 0.003% EDTA, 25% Glycerol (glycerin, glycerine), 0.88% Sodium chloride
------------	---

This product is an active protein and may elicit a biological response in vivo, handle with caution.

関連情報

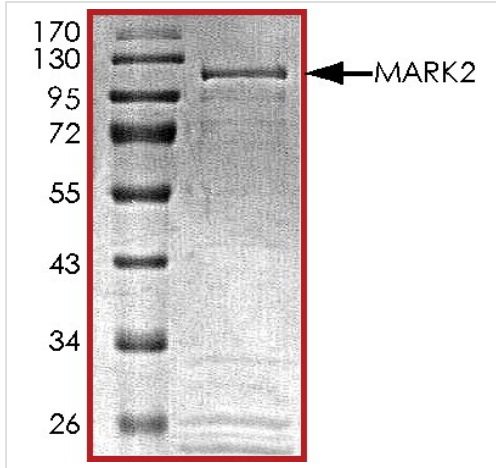
機能	Role in epithelial morphogenesis. Modulates the developmental decision to build a columnar versus a hepatic epithelial cell apparently by promoting a switch from a direct to a transcytotic mode of apical protein delivery. Essential for the asymmetric development of membrane domains of polarized epithelial cells. One or more isoforms may play a role in graft rejection.
組織特異性	High levels of expression in heart, brain, skeletal muscle and pancreas, lower levels observed in lung, liver and kidney.
配列類似性	Belongs to the protein kinase superfamily. CAMK Ser/Thr protein kinase family. MARK subfamily. Contains 1 KA1 (kinase-associated) domain. Contains 1 protein kinase domain. Contains 1 UBA domain.
細胞内局在	Cell membrane. Phosphorylated by PRKCZ in polarized epithelial cells, resulting in an interaction with YWHAZ which promotes relocation from the lateral to the apical membrane.

画像



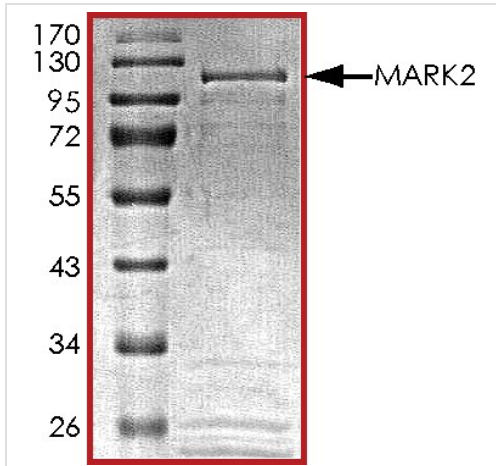
The specific activity of MARK2 (ab119135) was determined to be 790 nmol/min/mg as per activity assay protocol

Functional Studies - Recombinant human MARK2 protein (ab119135)



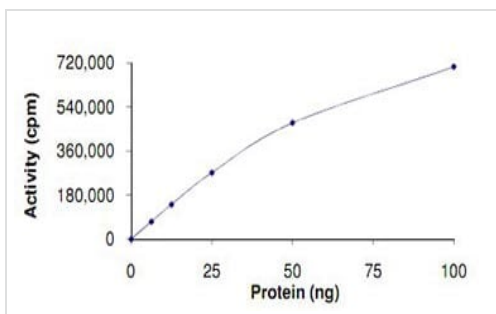
SDS PAGE analysis of ab119135

SDS-PAGE - Recombinant human MARK2 protein
(ab119135)



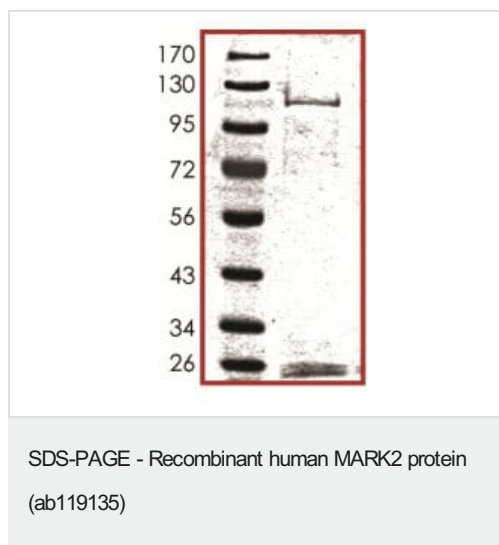
SDS PAGE analysis of ab119135

SDS-PAGE - Recombinant human MARK2 protein
(ab119135)



Sample Kinase Activity Plot: The specific activity of ab119135 was determined to be 795 nmol/min/mg.

Functional Studies - Recombinant human MARK2
protein (ab119135)



SDS-PAGE analysis of ab119135.

Please note: All products are "FOR RESEARCH USE ONLY. NOT FOR USE IN DIAGNOSTIC PROCEDURES"

Our Abpromise to you: Quality guaranteed and expert technical support

- Replacement or refund for products not performing as stated on the datasheet
- Valid for 12 months from date of delivery
- Response to your inquiry within 24 hours
- We provide support in Chinese, English, French, German, Japanese and Spanish
- Extensive multi-media technical resources to help you
- We investigate all quality concerns to ensure our products perform to the highest standards

If the product does not perform as described on this datasheet, we will offer a refund or replacement. For full details of the Abpromise, please visit <https://www.abcam.co.jp/abpromise> or contact our technical team.

Terms and conditions

- Guarantee only valid for products bought direct from Abcam or one of our authorized distributors