

Recombinant Human MAP3K8/COT protein ab84728

画像数 1

製品の詳細

製品名	Recombinant Human MAP3K8/COT protein
精製度	> 90 % Densitometry. Affinity purified.
発現系	Baculovirus infected Sf9 cells
タンパク質長	Protein fragment
Animal free	No
由来	Recombinant
生物種	Human
領域	30 to 397
タグ	GST tag N-Terminus

特性

Our **Abpromise guarantee** covers the use of **ab84728** in the following tested applications.

The application notes include recommended starting dilutions; optimal dilutions/concentrations should be determined by the end user.

アプリケーション	Western blot SDS-PAGE
製品の状態	Liquid
備考	This product was previously labelled as MAP3K8

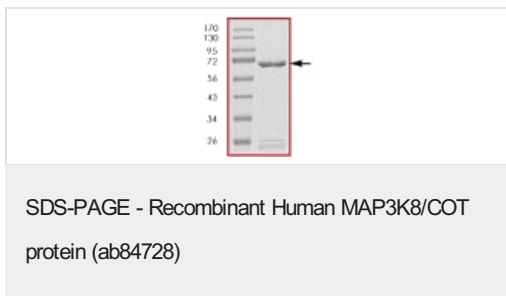
前処理および保存

保存方法および安定性	Shipped on dry ice. Upon delivery aliquot and store at -80°C. Avoid freeze / thaw cycles. pH: 7.50 Constituents: 0.0038% EGTA, 0.00174% PMSF, 0.00385% DTT, 0.79% Tris HCl, 0.00292% EDTA, 25% Glycerol (glycerin, glycerine), 0.29% Sodium chloride
------------	--

関連情報

機能	Required for TLR4 activation of the MEK/ERK pathway. Able to activate NF-kappa-B 1 by stimulating proteasome-mediated proteolysis of NF-kappa-B 1/p105. Plays a role in the cell cycle. The longer form has some transforming activity, although it is much weaker than the activated cot oncoprotein.
組織特異性	Expressed in several normal tissues and human tumor-derived cell lines.
配列類似性	Belongs to the protein kinase superfamily. STE Ser/Thr protein kinase family. MAP kinase kinase subfamily. Contains 1 protein kinase domain.
発生段階	Isoform 1 is activated specifically during the S and G2/M phases of the cell cycle.
翻訳後修飾	Autophosphorylated. Isoform 1 undergoes phosphorylation mainly on Ser residues, and isoform 2 on both Ser and Thr residues.
細胞内局在	Cytoplasm.

画像



ab84728 by SDS-Page

Please note: All products are "FOR RESEARCH USE ONLY. NOT FOR USE IN DIAGNOSTIC PROCEDURES"

Our Abpromise to you: Quality guaranteed and expert technical support

- Replacement or refund for products not performing as stated on the datasheet
- Valid for 12 months from date of delivery
- Response to your inquiry within 24 hours
- We provide support in Chinese, English, French, German, Japanese and Spanish
- Extensive multi-media technical resources to help you
- We investigate all quality concerns to ensure our products perform to the highest standards

If the product does not perform as described on this datasheet, we will offer a refund or replacement. For full details of the Abpromise, please visit <https://www.abcam.co.jp/abpromise> or contact our technical team.

Terms and conditions

- Guarantee only valid for products bought direct from Abcam or one of our authorized distributors