

Recombinant human MAP3K8/COT protein ab55700

画像数 4

製品の詳細

製品名	Recombinant human MAP3K8/COT protein		
生理活性	Specific activity: 1012 nmol/min/mg		
精製度	> 75 % Densitometry. Affinity purified.		
発現系	Baculovirus infected Sf9 cells		
アクセッション番号	<u>P46527</u>		
タンパク質長	Protein fragment		
Animal free	No		
由来	Recombinant		
生物種	Human		
配列	MENLYASEEP AVYEPSLMTM CQDSNQNDER SKSLLLSGQE VPWLSSVRYG TVEDLLAFAN HISNTAKHFY GQRPQESGIL LNMVITPQNG RYQIDSDVLL IPWKLTYRNI GSDFIPRGAF GKVYLAQDIK TKKRMACKLI PVDQFKPSDV EIQACFRHEN IAELYGAVLW GETVHLFMEA GEGGSVLEKL ESCGPMREFE IIWVTKHVLK GLDFLHSHKV IHHDIKPSNI VFMSTKAVLV DFGLSVQMTD DVYFPKDLRG TEIYMSPEVI LCRGHSTKAD IYSLGATLIH MQTGTPPWVK RYPRSAVPSY LYIIHKQAPP LEDIADDCSP GMRELIEASL ERNPNHRPRA ADLLKHEALN PPREDQPR		
予測される分子量	70 kDa		
領域	30 to 397		
タグ	GST tag N-Terminus		

特性

Our **Abpromise guarantee** covers the use of **ab55700** in the following tested applications.

The application notes include recommended starting dilutions; optimal dilutions/concentrations should be determined by the end user.

アプリケーション	SDS-PAGE
	Functional Studies

製品の状態

Liquid

備考

ab43623 (Human ERK1 full length protein) and **ab43614** (Human Myelin Basic Protein full length protein) can be utilized as a substrate for assessing kinase activity

This product was previously labelled as MAP3K8

前処理および保存

保存方法および安定性

Shipped on dry ice. Upon delivery aliquot and store at -80°C. Avoid freeze / thaw cycles.

pH: 7.50

Constituents: 0.0038% EGTA, 0.00174% PMSF, 0.00385% DTT, 0.79% Tris HCl, 0.00292% EDTA, 25% Glycerol (glycerin, glycerine), 0.87% Sodium chloride

This product is an active protein and may elicit a biological response in vivo, handle with caution.

関連情報

機能

Required for TLR4 activation of the MEK/ERK pathway. Able to activate NF-kappa-B 1 by stimulating proteasome-mediated proteolysis of NF-kappa-B 1/p105. Plays a role in the cell cycle. The longer form has some transforming activity, although it is much weaker than the activated cot oncoprotein.

組織特異性

Expressed in several normal tissues and human tumor-derived cell lines.

配列類似性

Belongs to the protein kinase superfamily. STE Ser/Thr protein kinase family. MAP kinase kinase kinase subfamily.

Contains 1 protein kinase domain.

発生段階

Isoform 1 is activated specifically during the S and G2/M phases of the cell cycle.

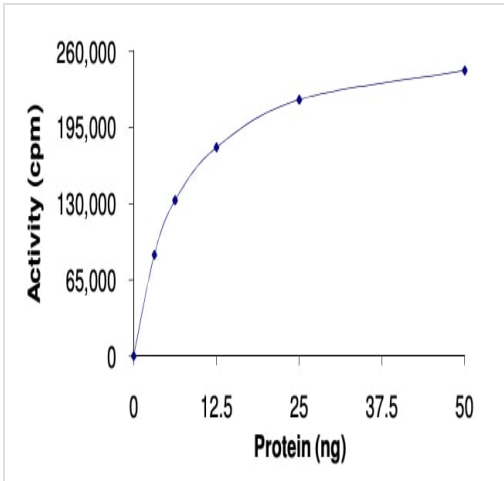
翻訳後修飾

Autophosphorylated. Isoform 1 undergoes phosphorylation mainly on Ser residues, and isoform 2 on both Ser and Thr residues.

細胞内局在

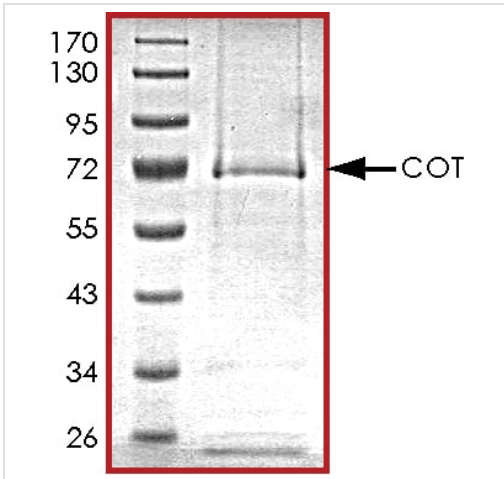
Cytoplasm.

画像



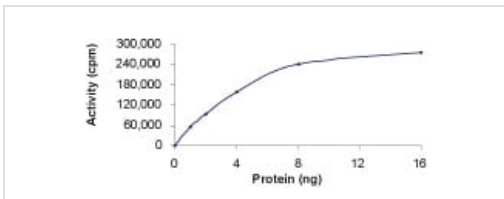
The specific activity of MAP3K8/COT (ab55700) was determined to be 1100 nmol/min/mg as per activity assay protocol

Functional Studies - Recombinant human MAP3K8/COT protein (ab55700)



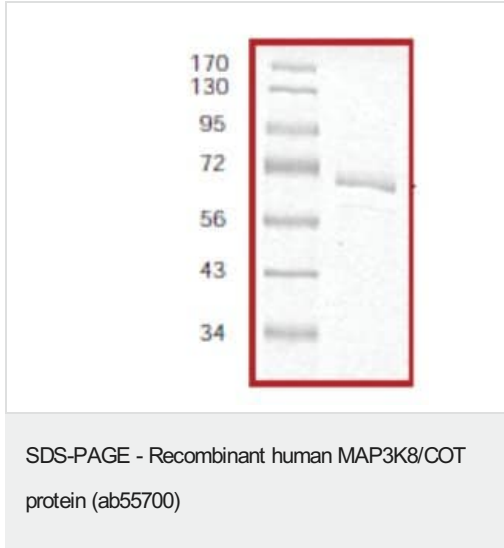
SDS PAGE analysis of ab55700

SDS-PAGE - Recombinant human MAP3K8/COT protein (ab55700)



Kinase activity plot using ab55700. Specific activity: 1012 nmol/min/mg.

Functional Studies - Recombinant human MAP3K8/COT protein (ab55700)



SDS-PAGE analysis of ab55700, with molecular weight markers.

Approximate molecular weight: 70kDa

Please note: All products are "FOR RESEARCH USE ONLY. NOT FOR USE IN DIAGNOSTIC PROCEDURES"

Our Abpromise to you: Quality guaranteed and expert technical support

- Replacement or refund for products not performing as stated on the datasheet
- Valid for 12 months from date of delivery
- Response to your inquiry within 24 hours
- We provide support in Chinese, English, French, German, Japanese and Spanish
- Extensive multi-media technical resources to help you
- We investigate all quality concerns to ensure our products perform to the highest standards

If the product does not perform as described on this datasheet, we will offer a refund or replacement. For full details of the Abpromise, please visit <https://www.abcam.co.jp/abpromise> or contact our technical team.

Terms and conditions

- Guarantee only valid for products bought direct from Abcam or one of our authorized distributors