

Recombinant human Lyn protein ab70789

画像数 4

製品の詳細

製品名	Recombinant human Lyn protein		
生理活性	The Specific activity of ab70789 was determined to be 571 nmol/min/mg.		
精製度	> 90 % SDS-PAGE. Purity: was determined to be >90% by densitometry. Affinity purified.		
発現系	Baculovirus infected Sf9 cells		
タンパク質長	Full length protein		
Animal free	No		
由来	Recombinant		
生物種	Human		
配列	MSPILGYWKI KGLVQPTRLL LEYLEEKYEE HLYERDEGDK WRNKKFELGL EFPNLPPYID GDVKLTQSMA IIRYIADKHN MLGGCPKERA EISMLEGAVL DIRYGVSRIA YSKDFETLKV DFLSKLPEML KMFEDRLCHK TYLNGDHVTH DFMLYDALD VVLYMDPMCL DAFPKLVCFK KRIEAIPQID KYLKSSKYIA WPLQGWAQTF GGGDHPPKSD LVPRGSMGCI SKGKDSLSD DGVDLKTQPV RNTERTIYVR PTSNKQQRV VPESQLLPQG RFQTKDPEEQ GDIVVALYPY DGIHPDDLSE KKGEKMKVLE EHGEWWAKS LTKKEGFIP SNYVAKLNTL ETEEWFFKDI TRKDAERQLL PGNSAGAFL IRESETLKGS FSLSVRDFDP VHGDVIKHYK IRSLDNGGYY ISPRITFPCI SDMIKHYYKQ ADGLCRRLEK ACISPKPQKP WDKDAWEIPR ESIKLVKRLG AGQFGEVWMG YYNNSTKVAV KTLKPGTMSV QAFLEEANLM TLQHDKLVR LYAVVTREEP IYIITEYMAK GSLLDFLKSD EGGKVLLPKL IDFSAQIAEG MAYIERKNYI HRDLRAANVL VSESLMCKIA DFGLARVIED NEYTAREGAK FPIKWTAPFA INFGCFTIKS DVWSFGILLY EIVTYGKIPY PGRTNADVMT LSQGYRMPR VENCPELYD IMKMCWKEA ERPTFDYLQ SVLDDFYTAT EGQYQQQP		
予測される分子量	85 kDa		
タグ	GST tag N-Terminus		

特性

Our **Abpromise guarantee** covers the use of **ab70789** in the following tested applications.

The application notes include recommended starting dilutions; optimal dilutions/concentrations should be determined by the end user.

アプリケーション

SDS-PAGE

Functional Studies

製品の状態

Liquid

備考

ab204877 (Poly (4:1 Glu, Tyr) peptide) can be utilized as a substrate for assessing kinase activity

前処理および保存

保存方法および安定性

Shipped on dry ice. Upon delivery aliquot and store at -80°C. Avoid freeze / thaw cycles.

pH: 7.50

Constituents: 0.0038% EGTA, 0.00174% PMSF, 0.00385% DTT, 0.79% Tris HCl, 0.00292% EDTA, 25% Glycerol (glycerin, glycerine), 0.87% Sodium chloride

This product is an active protein and may elicit a biological response in vivo, handle with caution.

関連情報

機能

Down regulates expression of stem cell growth factor receptor (KIT). Acts as an effector of EpoR (erythropoietin receptor) in controlling KIT expression and may play a central role in erythroid differentiation during the switch between proliferation and maturation (By similarity). Acts as a positive regulator of cell movement while negatively regulating adhesion to stromal cells by inhibiting the ICAM-1-binding activity of beta-2 integrins. Acts as the mediator that relays suppressing signals from the chemokine receptor CXCR4 to beta-2 integrin LFA-1 in hematopoietic precursors. Involved in induction of stress-activated protein kinase (SAPK), but not ERK or p38 MAPK, in response to genotoxic agents. Induces SAPK by a MKK7- and MEKK1-dependent mechanism. The LYN -> MEKK1 -> MKK7 -> SAPK pathway is functional in the induction of apoptosis by genotoxic agents.

組織特異性

Widely expressed in a variety of organs, tissues, and cell types such as epidermoid, hematopoietic, and neuronal cells. Expressed in primary neuroblastoma tumors.

配列類似性

Belongs to the protein kinase superfamily. Tyr protein kinase family. SRC subfamily.

Contains 1 protein kinase domain.

Contains 1 SH2 domain.

Contains 1 SH3 domain.

ドメイン

The protein kinase domain plays an important role in its localization in the cell membrane.

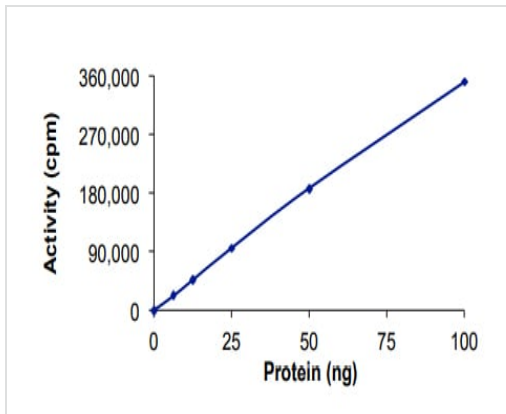
翻訳後修飾

Ubiquitinated. Ubiquitination is SH3-dependent.

細胞内局在

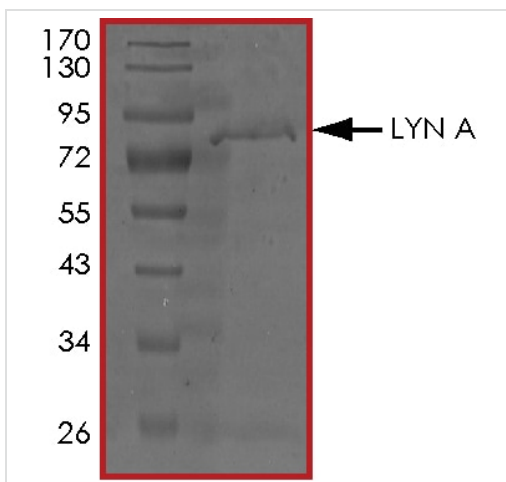
Cell membrane. Nucleus. Cytoplasm. Cytoplasm > perinuclear region. Golgi apparatus. Accumulates in the nucleus by inhibition of CRM1-mediated nuclear export. Nuclear accumulation is increased by inhibition of its kinase activity. The trafficking from the Golgi apparatus to the plasma membrane occurs in a kinase domain-dependent but kinase activity independent manner and is mediated by exocytic vesicular transport.

画像



The specific activity of Lyn (ab70789) was determined to be 485 nmol/min/mg as per activity assay protocol

Functional Studies - Recombinant human Lyn protein (ab70789)



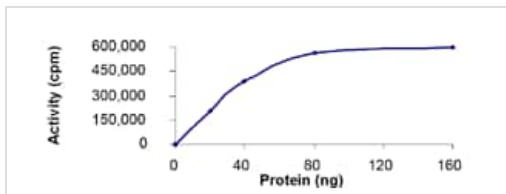
SDS PAGE analysis of ab70789

SDS-PAGE - Recombinant human Lyn protein (ab70789)



SDS-PAGE showing ab70789 at approximately 85 kDa.

SDS-PAGE - Recombinant human Lyn protein (ab70789)



Kinase Assay demonstrating specific activity of ab70789.

Functional Studies - Recombinant human Lyn protein (ab70789)

Please note: All products are "FOR RESEARCH USE ONLY. NOT FOR USE IN DIAGNOSTIC PROCEDURES"

Our Abpromise to you: Quality guaranteed and expert technical support

- Replacement or refund for products not performing as stated on the datasheet
- Valid for 12 months from date of delivery
- Response to your inquiry within 24 hours
- We provide support in Chinese, English, French, German, Japanese and Spanish
- Extensive multi-media technical resources to help you
- We investigate all quality concerns to ensure our products perform to the highest standards

If the product does not perform as described on this datasheet, we will offer a refund or replacement. For full details of the Abpromise, please visit <https://www.abcam.co.jp/abpromise> or contact our technical team.

Terms and conditions

- Guarantee only valid for products bought direct from Abcam or one of our authorized distributors