

Recombinant human LTK protein ab179494

画像数 2

製品の詳細

製品名	Recombinant human LTK protein
生理活性	The specific activity was determined to be 15 nmol/min/mg.
精製度	> 90 % Densitometry. Affinity purified.
発現系	Baculovirus infected Sf9 cells
アクセッション番号	<u>P29376</u>
タンパク質長	Protein fragment
Animal free	No
由来	Recombinant
生物種	Human
配列	LPP GVTEVSPANV TLLRALGHGA FGEVYEGLVI GLPGDSSPLQ VAIKTLPELC SPQDELDFLM EALIISKFRH QNIVRCVGLS LRATPRLILL ELMSGGDMKS FLRHSRPHLG QPSPLVMRDL LQLAQDIAQG CHYLEENHFI HRDIAARNCL LSCAGPSRVA KIGDFGMARD IYRASYRRG DRALLPVKWM PPEAFLEGIF TSKTDSWSFG VLLWEIFSLG YMPYPGRTNQ EVLDFVVGGG RMDPPRGCPG PVYRIMTQCW QHEPELRPSF ASILERLQYC TQDPDVLNSL LPMELG
予測される分子量	70 kDa including tags
領域	498 to 796
タグ	proprietary tag N-Terminus
配列の追加情報	NM_002344.

特性

Our **Abpromise guarantee** covers the use of **ab179494** in the following tested applications.

The application notes include recommended starting dilutions; optimal dilutions/concentrations should be determined by the end user.

アプリケーション	SDS-PAGE
	Functional Studies

Western blot

製品の状態

Liquid

備考

ab204848 (c Abl peptide) can be utilized as a substrate for assessing Kinase activity

前処理および保存

保存方法および安定性

Shipped on Dry Ice. Upon delivery aliquot. Store at -80°C. Avoid freeze / thaw cycle.

pH: 7.50

Constituents: 0.79% Tris HCl, 0.88% Sodium chloride, 0.31% Glutathione, 0.003% EDTA, 0.004% DTT, 0.002% PMSF, 25% Glycerol (glycerin, glycerine)

This product is an active protein and may elicit a biological response in vivo, handle with caution.

関連情報

機能

Orphan receptor with a tyrosine-protein kinase activity. The exact function of this protein is not known. Studies with chimeric proteins (replacing its extracellular region with that of several known growth factor receptors, such as EGFR and CSFIR) demonstrate its ability to promote growth and specifically neurite outgrowth, and cell survival. Signaling appears to involve the PI3 kinase pathway. Involved in regulation of the secretory pathway involving endoplasmic reticulum (ER) export sites (ERESs) and ER to Golgi transport.

組織特異性

Expressed in non-hematopoietic cell lines and T- and B-cell lines.

関連疾患

Note=Genetic variations in LTK that cause up-regulation of the PI3K pathway may possibly contribute to susceptibility to abnormal proliferation of self-reactive B cells and, therefore, to systemic lupus erythematosus (SLE). SLE is a chronic, inflammatory and often febrile multisystemic disorder of connective tissue, thought to represent a failure of the regulatory mechanisms of the autoimmune system.

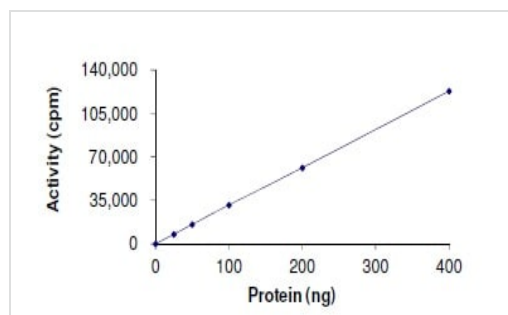
配列類似性

Belongs to the protein kinase superfamily. Tyr protein kinase family. Insulin receptor subfamily. Contains 1 protein kinase domain.

細胞内局在

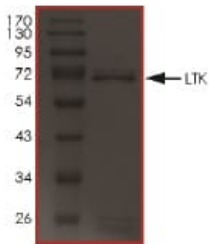
Membrane.

画像



The specific activity was determined to be 15 nmol/min/mg.

Functional Studies - Recombinant human LTK protein (ab179494)



SDS-PAGE - Recombinant human LTK protein
(ab179494)

The purity was determined to be > 90% by densitometry. MW ~70 kDa.

Please note: All products are "FOR RESEARCH USE ONLY. NOT FOR USE IN DIAGNOSTIC PROCEDURES"

Our Abpromise to you: Quality guaranteed and expert technical support

- Replacement or refund for products not performing as stated on the datasheet
- Valid for 12 months from date of delivery
- Response to your inquiry within 24 hours
- We provide support in Chinese, English, French, German, Japanese and Spanish
- Extensive multi-media technical resources to help you
- We investigate all quality concerns to ensure our products perform to the highest standards

If the product does not perform as described on this datasheet, we will offer a refund or replacement. For full details of the Abpromise, please visit <https://www.abcam.co.jp/abpromise> or contact our technical team.

Terms and conditions

- Guarantee only valid for products bought direct from Abcam or one of our authorized distributors