

Recombinant Human Loricrin protein ab114261

画像数 1

製品の詳細

製品名	Recombinant Human Loricrin protein
発現系	Wheat germ
アクセッション番号	P23490
タンパク質長	Full length protein
Animal free	No
由来	Recombinant
生物種	Human
配列	MSYQKKQTPQPVPDCVKTSGGGGGGGGGGGGCGFFGGGGS GGGSSGSG CGYSGGGGYSGGGCG GGSSGGGGGGIGGCGGSGGSKYSGGGSSG GGSGCFSSGGGSGCFSSGGGSSGGGSGCFS SGGGGSSGGGSGCFSS GGGFGSQAVQCQSYGGVSSGGSSGGGSGCFSSGGGGGSGVCG YSGGGSG GGSGCGGSSGGSGGYVSSQVQTQTSCAPQPSYGGGSSGGG GSGGSGC FSSGGGGGSSGCGGGS SGIGSGCIISGGGSGCGGSSGGGGGGSSVGG SGSGKGVPICHQTQQKQAPTWPSK
予測される分子量	61 kDa including tags
領域	1 to 316

特性

Our **Abpromise guarantee** covers the use of **ab114261** in the following tested applications.

The application notes include recommended starting dilutions; optimal dilutions/concentrations should be determined by the end user.

アプリケーション	ELISA
	SDS-PAGE
	Western blot

製品の状態 Liquid

備考

前処理および保存

保存方法および安定性

Shipped on dry ice. Upon delivery aliquot and store at -80°C. Avoid freeze / thaw cycles.

pH: 8.00

Constituents: 0.3% Glutathione, 0.79% Tris HCl

関連情報

機能

Major keratinocyte cell envelope protein.

関連疾患

Defects in LOR are a cause of progressive symmetric erythrokeratoderma (PSEK) [MIM:133200]. Erythrokeratodermas are a group of disorders characterized by widespread erythematous plaques, either stationary or migratory, associated with features that include palmoplantar keratoderma. PSEK is characterized by erythematous and hyperkeratotic plaques. Defects in LOR are the cause of Vohwinkel syndrome with ichthyosis (VSI) [MIM:604117]; also known as loricrin keratoderma (LK) or mutilating keratoderma with ichthyosis. VSI is an ichthyotic variant of Vohwinkel syndrome (VS) characterized by progressive symmetric erythrokeratoderma or congenital ichthyosiform erythroderma born as a collodion baby. Common clinical features include hyperkeratosis of the palms and soles with digital constriction.

翻訳後修飾

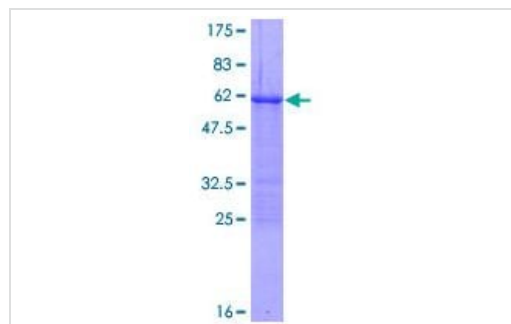
Substrate of transglutaminases. Some glutamines and lysines are cross-linked to other loricrin molecules and to SPRRs proteins.

Contains inter- or intramolecular disulfide-bonds.

細胞内局在

Cytoplasm. Nucleus > nucleoplasm.

画像



SDS-PAGE - Recombinant Human Loricrin protein
(ab114261)

ab114261 analysed by 12.5% SDS-PAGE and stained with Coomassie Blue.

Please note: All products are "FOR RESEARCH USE ONLY. NOT FOR USE IN DIAGNOSTIC PROCEDURES"

Our Abpromise to you: Quality guaranteed and expert technical support

- Replacement or refund for products not performing as stated on the datasheet
- Valid for 12 months from date of delivery
- Response to your inquiry within 24 hours

- We provide support in Chinese, English, French, German, Japanese and Spanish
- Extensive multi-media technical resources to help you
- We investigate all quality concerns to ensure our products perform to the highest standards

If the product does not perform as described on this datasheet, we will offer a refund or replacement. For full details of the Abpromise, please visit <https://www.abcam.co.jp/abpromise> or contact our technical team.

Terms and conditions

- Guarantee only valid for products bought direct from Abcam or one of our authorized distributors