

# Recombinant Human Lipoamide Dehydrogenase protein ab93679

画像数 2

### 製品の詳細

---

製品名	Recombinant Human Lipoamide Dehydrogenase protein
生理活性	Specific activity is > 200 units/mg, one unit will reduce 1.0 umole of DL-lipoamide to DL-dihydrolipoamide per minute at pH 6.5 at 25C.
精製度	> 95 % SDS-PAGE. ab93679 is purified using conventional chromatography techniques.
発現系	Escherichia coli
タンパク質長	Full length protein
Animal free	No
由来	Recombinant
生物種	Human

### 特性

---

Our **Abpromise guarantee** covers the use of **ab93679** in the following tested applications.

The application notes include recommended starting dilutions; optimal dilutions/concentrations should be determined by the end user.

アプリケーション	SDS-PAGE Western blot
----------	--------------------------

製品の状態	Liquid
-------	--------

### 前処理および保存

---

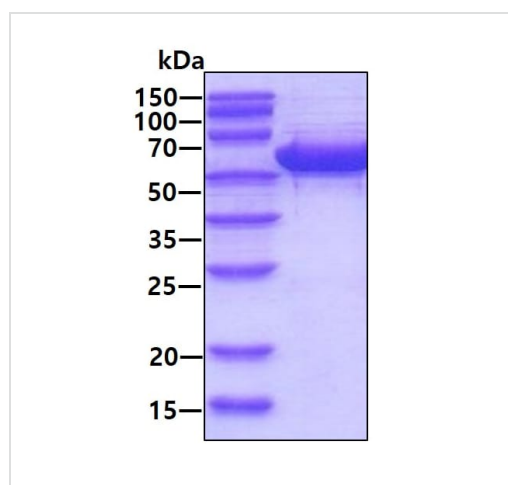
保存方法および安定性	Shipped at 4°C. Upon delivery aliquot and store at -20°C or -80°C. Avoid repeated freeze / thaw cycles. pH: 8.00 Constituents: 0.0154% DTT, 0.316% Tris HCl, 10% Glycerol (glycerin, glycerine), 0.58% Sodium chloride This product is an active protein and may elicit a biological response in vivo, handle with caution.
------------	--

### 関連情報

---

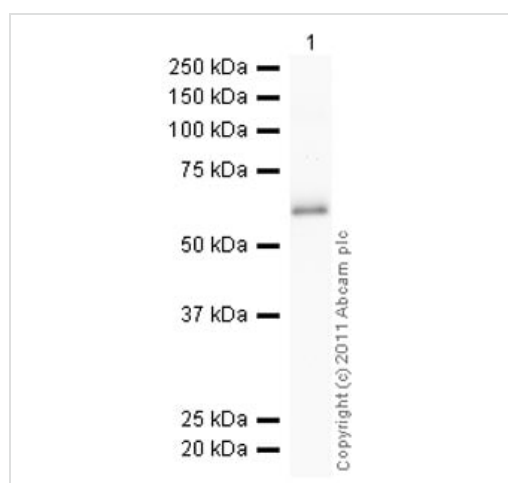
<b>機能</b>	Lipoamide dehydrogenase is a component of the glycine cleavage system as well as of the alpha-ketoacid dehydrogenase complexes. Involved in the hyperactivation of spermatazoa during capacitation and in the spermatazoal acrosome reaction.
<b>関連疾患</b>	Note=Defects in DLD are involved in the development of congenital infantile lactic acidosis. Defects in DLD are a cause of maple syrup urine disease (MSUD) [MIM:248600]. MSUD is characterized by mental and physical retardation, feeding problems and a maple syrup odor to the urine. The keto acids of the branched-chain amino acids are present in the urine, resulting from a block in oxidative decarboxylation.
<b>配列類似性</b>	Belongs to the class-I pyridine nucleotide-disulfide oxidoreductase family.
<b>翻訳後修飾</b>	Tyrosine phosphorylated.
<b>細胞内局在</b>	Mitochondrion matrix.

## 画像



3ug by SDS-PAGE under reducing conditions and visualized by coomassie blue stain.

SDS-PAGE - Recombinant Human Lipoamide Dehydrogenase protein (ab93679)



Western blot - Recombinant Human Lipoamide Dehydrogenase protein (ab93679)

**Please note:** All products are "FOR RESEARCH USE ONLY. NOT FOR USE IN DIAGNOSTIC PROCEDURES"

### **Our Abpromise to you: Quality guaranteed and expert technical support**

---

- Replacement or refund for products not performing as stated on the datasheet
- Valid for 12 months from date of delivery
- Response to your inquiry within 24 hours
  
- We provide support in Chinese, English, French, German, Japanese and Spanish
- Extensive multi-media technical resources to help you
- We investigate all quality concerns to ensure our products perform to the highest standards

If the product does not perform as described on this datasheet, we will offer a refund or replacement. For full details of the Abpromise, please visit <https://www.abcam.co.jp/abpromise> or contact our technical team.

### **Terms and conditions**

---

- Guarantee only valid for products bought direct from Abcam or one of our authorized distributors