

# Recombinant Human LAMP2 protein ab114167

画像数 1

### 製品の詳細

製品名	Recombinant Human LAMP2 protein
発現系	Wheat germ
アクセッション番号	<b>P13473</b>
タンパク質長	Protein fragment
Animal free	No
由来	Recombinant
生物種	Human
配列	ELNLTDSENATCLYAKWQMNFTVRYETTNKTYKTVTISDHGT VTYNGSIC GDDQNGPKIAVQFGPGFSWIANFTKAASTYSIDSVSFSYNTG DNTTFP
予測される分子量	36 kDa including tags
領域	30 to 127

### 特性

Our **Abpromise guarantee** covers the use of **ab114167** in the following tested applications.

The application notes include recommended starting dilutions; optimal dilutions/concentrations should be determined by the end user.

アプリケーション	SDS-PAGE
	Western blot
	ELISA
製品の状態	Liquid

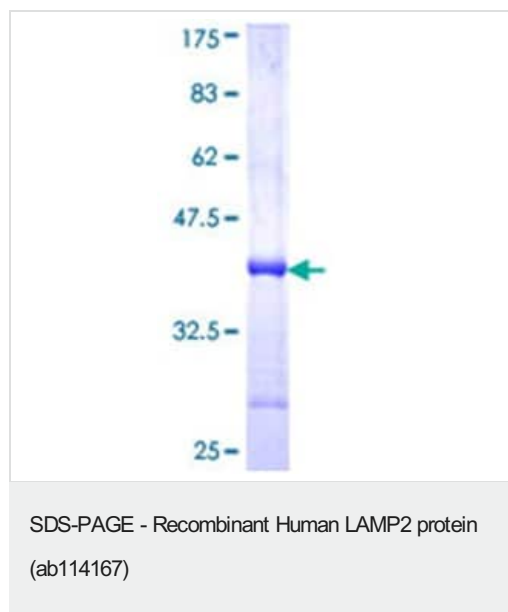
### 前処理および保存

保存方法および安定性	Shipped on dry ice. Upon delivery aliquot and store at -80°C. Avoid freeze / thaw cycles. pH: 8.00 Constituents: 0.3% Glutathione, 0.79% Tris HCl
------------	---

### 関連情報

<b>機能</b>	Implicated in tumor cell metastasis. May function in protection of the lysosomal membrane from autodigestion, maintenance of the acidic environment of the lysosome, adhesion when expressed on the cell surface (plasma membrane), and inter-and intracellular signal transduction. Protects cells from the toxic effects of methylating mutagens.
<b>組織特異性</b>	Isoform LAMP-2A is highly expressed in placenta, lung and liver, less in kidney and pancreas, low in brain and skeletal muscle. Isoform LAMP-2B is highly expressed in skeletal muscle, less in brain, placenta, lung, kidney and pancreas, very low in liver.
<b>関連疾患</b>	Defects in LAMP2 are the cause of Danon disease (DAND) [MIM:300257]; also known as glycogen storage disease type 2B (GSD2B). DAND is a lysosomal glycogen storage disease characterized by the clinical triad of cardiomyopathy, vacuolar myopathy and mental retardation. It is often associated with an accumulation of glycogen in muscle and lysosomes.
<b>配列類似性</b>	Belongs to the LAMP family.
<b>翻訳後修飾</b>	O- and N-glycosylated; some of the 16 N-linked glycans are polylactosaminoglycans.
<b>細胞内局在</b>	Cell membrane. Endosome membrane. Lysosome membrane. This protein shuttles between lysosomes, endosomes, and the plasma membrane.

## 画像



12.5% SDS-PAGE analysis of ab114167, stained with Coomassie Blue.

**Please note:** All products are "FOR RESEARCH USE ONLY. NOT FOR USE IN DIAGNOSTIC PROCEDURES"

## Our Abpromise to you: Quality guaranteed and expert technical support

- Replacement or refund for products not performing as stated on the datasheet
- Valid for 12 months from date of delivery
- Response to your inquiry within 24 hours
- We provide support in Chinese, English, French, German, Japanese and Spanish
- Extensive multi-media technical resources to help you
- We investigate all quality concerns to ensure our products perform to the highest standards

If the product does not perform as described on this datasheet, we will offer a refund or replacement. For full details of the Abpromise, please visit <https://www.abcam.co.jp/abpromise> or contact our technical team.

#### **Terms and conditions**

---

- Guarantee only valid for products bought direct from Abcam or one of our authorized distributors