

Product datasheet

Recombinant Human Laminin 2 alpha protein ab114155

画像数 1

製品の詳細

製品名	Recombinant Human Laminin 2 alpha protein
発現系	Wheat germ
アクセッション番号	P24043
タンパク質長	Protein fragment
Animal free	No
由来	Recombinant
生物種	Human
配列	DAGVPGHLCDGQWHKVTANKIKHRIELTVDGNQVEAQSPNPA STSADTND PVFVGGFPDDLKQFGLTTSIPFRGCIRSLKLTGKTGKPLEVN FAKALELR GVQPVSPAN
予測される分子量	38 kDa including tags
領域	3013 to 3122

特性

Our **Abpromise guarantee** covers the use of **ab114155** in the following tested applications.

The application notes include recommended starting dilutions; optimal dilutions/concentrations should be determined by the end user.

アプリケーション	Western blot
	ELISA
	SDS-PAGE
製品の状態	Liquid

備考

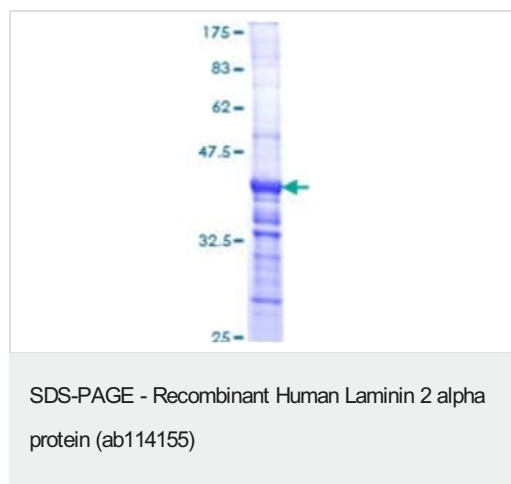
前処理および保存

保存方法および安定性	Shipped on dry ice. Upon delivery aliquot and store at -80°C. Avoid freeze / thaw cycles. pH: 8.00 Constituents: 0.3% Glutathione, 0.79% Tris HCl
------------	---

関連情報

機能	Binding to cells via a high affinity receptor, laminin is thought to mediate the attachment, migration and organization of cells into tissues during embryonic development by interacting with other extracellular matrix components.
組織特異性	Placenta, striated muscle, peripheral nerve, cardiac muscle, pancreas, lung, spleen, kidney, adrenal gland, skin, testis, meninges, choroid plexus, and some other regions of the brain; not in liver, thymus and bone.
関連疾患	Defects in LAMA2 are the cause of merosin-deficient congenital muscular dystrophy type 1A (MDC1A) [MIM:607855]. MDC1A is characterized by difficulty walking, hypotonia, proximal weakness, hyporeflexia, and white matter hypodensity on MRI.
配列類似性	Contains 17 laminin EGF-like domains. Contains 5 laminin G-like domains. Contains 2 laminin IV type A domains. Contains 1 laminin N-terminal domain.
ドメイン	The alpha-helical domains I and II are thought to interact with other laminin chains to form a coiled coil structure. Domains VI, IV and G are globular.
細胞内局在	Secreted > extracellular space > extracellular matrix > basement membrane. Major component.

画像



12.5% SDS-PAGE analysis of ab114155, stained with Coomassie Blue.

Please note: All products are "FOR RESEARCH USE ONLY. NOT FOR USE IN DIAGNOSTIC PROCEDURES"

Our Abpromise to you: Quality guaranteed and expert technical support

- Replacement or refund for products not performing as stated on the datasheet
- Valid for 12 months from date of delivery
- Response to your inquiry within 24 hours
- We provide support in Chinese, English, French, German, Japanese and Spanish

- Extensive multi-media technical resources to help you
- We investigate all quality concerns to ensure our products perform to the highest standards

If the product does not perform as described on this datasheet, we will offer a refund or replacement. For full details of the Abpromise, please visit <https://www.abcam.co.jp/abpromise> or contact our technical team.

Terms and conditions

- Guarantee only valid for products bought direct from Abcam or one of our authorized distributors