

# Recombinant human Lactate Dehydrogenase protein (Active) ab93699

4 References 画像数 2

### 製品の詳細

製品名	Recombinant human Lactate Dehydrogenase protein (Active)
生理活性	Specific activity is > 300 units/mg. in which one unit will convert 1.0 umole of pyruvate to L-lactate and beta-NAD per minute at pH 7.5 at 37°C.
	<b>Activity Assay</b> Prepare a 1.5 ml reaction mix into a suitable container, adjust to pH 7.5 at 37°C and pre-chill on ice before use: The final concentrations are 100mM Sodium phosphate, 0.12 mM beta-nicotinamide adenine dinucleotide, reduced form, 2.3mM Pyruvate, 0.033% (w/v) bovine serum albumin. Equilibrate to 37°C and monitor at A340nm until the value is constant using a spectrophotometer. Add 50ul of recombinant LDHA protein in various concentrations (0.1ug, 0.5ug) in assay buffer. Mix by inversion and record the increase at A340nm for 5 minutes.
精製度	> 95 % SDS-PAGE. ab93699 is purified by using conventional chromatography techniques.
発現系	Escherichia coli
アクセッション番号	<b><u>P00338</u></b>
タンパク質長	Full length protein
Animal free	No
由来	Recombinant
生物種	Human
配列	MGSSHHHHHH SSGLVPRGSH MATLKDQLIY NLLKEEQTPQ NKITVVG VGA VGMACAISIL MKDLADELAL VDVIEDKLKG EMDLQHGSL FLRTPKIVSG KDYNVTANSK LVIITAGARQ QEGESRLNLV QRNVNIFKFI IPNVVKYSPN CKLLIVSNPV DILTYVAWKI SGFPKNRVIG SGCNLD SARF RYLMGERLGV HPLSCHGWVL GEHGDSSVPV WSGMNVAGVS LKTLHPDLGT DKDKQWKEV HKQVVE SAYE VIKLKG YTSW AIGLSVADLA ESIMKNLRRV HPVSTMIKGL YGIKDDVFLS VPCILGQNGI SDLVKVTLTS

予測される分子量	39 kDa
領域	1 to 332
タグ	His tag N-Terminus
配列の追加情報	(NP_005557)

## 特性

---

Our **Abpromise guarantee** covers the use of **ab93699** in the following tested applications.

The application notes include recommended starting dilutions; optimal dilutions/concentrations should be determined by the end user.

アプリケーション	Functional Studies
	SDS-PAGE
	Western blot
質量分析	MALDI-TOF
製品の状態	Liquid
備考	Concentration determined by Bradford assay.

## 前処理および保存

---

保存方法および安定性	Shipped at 4°C. Store at +4°C short term (1-2 weeks). Upon delivery aliquot. Store at -20°C or -80°C. Avoid freeze / thaw cycle.
	pH: 8.00
	Constituents: 0.316% Tris HCl, 20% Glycerol, 0.58% Sodium chloride
	This product is an active protein and may elicit a biological response in vivo, handle with caution.

## 関連情報

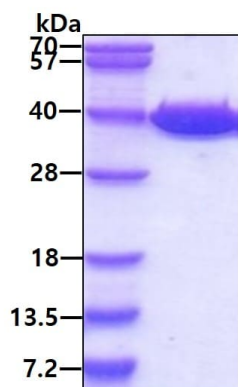
---

パスウェイ	Fermentation; pyruvate fermentation to lactate; (S)-lactate from pyruvate: step 1/1.
関連疾患	Defects in LDHA are the cause of glycogen storage disease type 11 (GSD11) [MIM:612933]. A metabolic disorder that results in exertional myoglobinuria, pain, cramps and easy fatigue.
配列類似性	Belongs to the LDH/MDH superfamily. LDH family.
翻訳後修飾	ISGylated.
細胞内局在	Cytoplasm.

---

## 画像

---

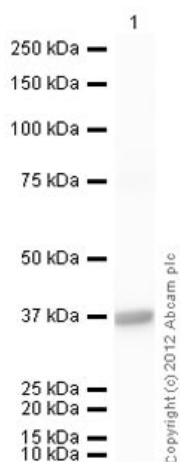


SDS-PAGE analysis of Recombinant Human Lactate Dehydrogenase protein (ab93699), under reducing conditions. Proteins visualized by coomassie blue stain.

Lane 1: Molecular Weight Standards

Lane 2: 3 µg Recombinant Human Lactate Dehydrogenase protein

SDS-PAGE - Recombinant human Lactate Dehydrogenase protein (Active) (ab93699)



Western blot - Recombinant human Lactate Dehydrogenase protein (Active) (ab93699)

**Please note:** All products are "FOR RESEARCH USE ONLY. NOT FOR USE IN DIAGNOSTIC PROCEDURES"

### Our Abpromise to you: Quality guaranteed and expert technical support

- Replacement or refund for products not performing as stated on the datasheet
- Valid for 12 months from date of delivery
- Response to your inquiry within 24 hours
- We provide support in Chinese, English, French, German, Japanese and Spanish

- Extensive multi-media technical resources to help you
- We investigate all quality concerns to ensure our products perform to the highest standards

If the product does not perform as described on this datasheet, we will offer a refund or replacement. For full details of the Abpromise, please visit <https://www.abcam.co.jp/abpromise> or contact our technical team.

#### **Terms and conditions**

---

- Guarantee only valid for products bought direct from Abcam or one of our authorized distributors