

Recombinant human Lactate Dehydrogenase B/LDH-B protein ab96765

画像数 1

製品の詳細

製品名	Recombinant human Lactate Dehydrogenase B/LDH-B protein
生理活性	Specific activity is > 300 units/mg. in which one unit will convert 1.0 umole of pyruvate to L-lactate and beta-NAD per minute at pH 7.5 at 37°C.
	Activity Assay
	Prepare a 1.5 ml reaction mix into a suitable container, adjust to pH7.5 at 37°C, and pre-chill on ice before use: The final concentrations are 100mM Sodium phosphate, 0.12 mM beta-nicotinamide adenine dinucleotide, reduced form, 2.3mM Pyruvate, 0.033% (w/v) bovine serum albumin.
	Equilibrate to 37°C and monitor at A340nm until the value is constant using a spectrophotometer
	Add 50ul of recombinant LDHB protein in various concentrations (0.1ug, 0.5ug) in assay buffer.
	Mix by inversion and record the increase at A340nm for 5 minutes.
精製度	> 95 % SDS-PAGE. ab96765 is purified by using conventional chromatography techniques.
発現系	Escherichia coli
アクセッション番号	<u>P07195</u>
タンパク質長	Full length protein
Animal free	No
由来	Recombinant
生物種	Human
配列	<p>MGSSHHHHHH</p> <p>SSGLVPRGSHMATLKEKLIAPVAEEEEATVP</p> <p>NNKITVVGQVGMACAISILGKSLADELALVDVLEDKLGKE</p> <p>MMDLQHGS</p> <p>LFLQTPKIVADKDYSVTANSKIVVVVTAGVRQEGESRLNLVQ</p> <p>RNVNVFKF</p> <p>IIPQIVKYSPDCIIIVVSNPVDILTYVTWKL SGLPKHRVIGS</p> <p>GCNLSAR</p> <p>FRYLMAEKLGIHPSSCHGWILGEHGDSSVAVWSGVNVAGVSL</p> <p>QELNPEMG</p> <p>TDNSENWKEVHKMIVESAYEVIKLGKGYTNWAIGLSVADLIE</p>

SMLKNLSR

IHPVSTMVKGMYGIENEVFLSLPCILNARGLTSVINQKDKDD

EVAQLKKS ADTLWDIQDKDL

予測される分子量	37 kDa including tags
領域	1 to 334
タグ	His tag N-Terminus

特性

Our **Abpromise guarantee** covers the use of **ab96765** in the following tested applications.

The application notes include recommended starting dilutions; optimal dilutions/concentrations should be determined by the end user.

アプリケーション	Mass Spectrometry SDS-PAGE
質量分析	MALDI-TOF
製品の状態	Liquid
備考	Previously labelled as Lactate Dehydrogenase B.

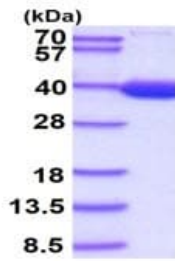
前処理および保存

保存方法および安定性	Shipped at 4°C. Store at +4°C short term (1-2 weeks). Upon delivery aliquot. Store at -20°C or -80°C. Avoid freeze / thaw cycle. pH: 8.00 Constituents: 0.0154% DTT, 0.316% Tris HCl, 10% Glycerol This product is an active protein and may elicit a biological response in vivo, handle with caution.
------------	--

関連情報

パスウェイ	Fermentation; pyruvate fermentation to lactate; (S)-lactate from pyruvate: step 1/1.
関連疾患	Note=Defects in LDHB result in deficiency of lactate dehydrogenase, a condition with no clear symptomatic consequences. Lactate dehydrogenase deficiency can probably be considered a non-disease.
配列類似性	Belongs to the LDH/MDH superfamily. LDH family.
細胞内局在	Cytoplasm.

画像



15% SDS-PAGE showing ab96765 at approximately 38.8kDa (3µg).

SDS-PAGE - Recombinant human Lactate Dehydrogenase B/LDH-B protein (ab96765)

Please note: All products are "FOR RESEARCH USE ONLY. NOT FOR USE IN DIAGNOSTIC PROCEDURES"

Our Abpromise to you: Quality guaranteed and expert technical support

- Replacement or refund for products not performing as stated on the datasheet
- Valid for 12 months from date of delivery
- Response to your inquiry within 24 hours
- We provide support in Chinese, English, French, German, Japanese and Spanish
- Extensive multi-media technical resources to help you
- We investigate all quality concerns to ensure our products perform to the highest standards

If the product does not perform as described on this datasheet, we will offer a refund or replacement. For full details of the Abpromise, please visit <https://www.abcam.co.jp/abpromise> or contact our technical team.

Terms and conditions

- Guarantee only valid for products bought direct from Abcam or one of our authorized distributors