

Recombinant Human KPNA4 protein ab114626

画像数 1

製品の詳細

製品名	Recombinant Human KPNA4 protein
精製度	>= 80 % Purified via GST Tag. Glutathione Sepharose
発現系	Wheat germ
アクセッション番号	<u>O00629</u>
タンパク質長	Full length protein
Animal free	No
由来	Recombinant
生物種	Human
配列	<p>MADNEKLDNQRLKNFKNKGRDLETMRRQRNEVVVELRKNKRD EHLLKRRN VPHEICEDSDIDGDIRVQNTSLEAIVQNASSDNQGIQLSAV QAARKLLS SDRNPPIDDLIKSGILPILVHCLERDDNPSLQFEAAWALTNI ASGTSEQT QAVVQSNAPVPLFLRLLHSPHQNVCEQAVWALGNIIGDGPQCR DYVISLGV VKPLLSFISPSIPITFLRNVTWVMVNLCRHKDPPPPMETIQE ILPALCVL IHHTDVNILLVDTVWALSYLTDAGNEQIQMVIDSGIVPHLVPL LSHQEVKV QTAALRAVGNIIVTGTDEQTQVVLNCDALSHFPALLTHPKEKI NKEAVWFL SNITAGNQQQVQAVIDANLVPMIIHLLDKGDFGTQKEAAWAI SNLTISGR KDQVAYLIQQNVIPPCNLLTVKDAQVVQVVLGDGLSNILKMA EDEAETIG NLIEECGGLEKIEQLQNHENEDIYKLAYEIIDQFFSSDDIDE DPSLVPEA IQGGTFGFNSSANVPTEGFQF</p>
予測される分子量	83 kDa including tags
領域	1 to 521
タグ	GST tag N-Terminus

特性

Our **Abpromise guarantee** covers the use of **ab114626** in the following tested applications.

The application notes include recommended starting dilutions; optimal dilutions/concentrations should be determined by the end user.

アプリケーション	ELISA
	SDS-PAGE
	Western blot

製品の状態	Liquid
-------	--------

前処理および保存

保存方法および安定性	Shipped on dry ice. Upon delivery aliquot and store at -80°C. Avoid freeze / thaw cycles. pH: 8.00 Constituents: 0.3% Glutathione, 0.79% Tris HCl
------------	---

関連情報

機能	Functions in nuclear protein import as an adapter protein for nuclear receptor KPNB1. Binds specifically and directly to substrates containing either a simple or bipartite NLS motif. Docking of the importin/substrate complex to the nuclear pore complex (NPC) is mediated by KPNB1 through binding to nucleoporin FxFG repeats and the complex is subsequently translocated through the pore by an energy requiring, Ran-dependent mechanism. At the nucleoplasmic side of the NPC, Ran binds to importin-beta and the three components separate and importin-alpha and -beta are re-exported from the nucleus to the cytoplasm where GTP hydrolysis releases Ran from importin. The directionality of nuclear import is thought to be conferred by an asymmetric distribution of the GTP- and GDP-bound forms of Ran between the cytoplasm and nucleus. In vitro, mediates the nuclear import of human cytomegalovirus UL84 by recognizing a non-classical NLS. In vitro, mediates the nuclear import of human cytomegalovirus UL84 by recognizing a non-classical NLS.
----	---

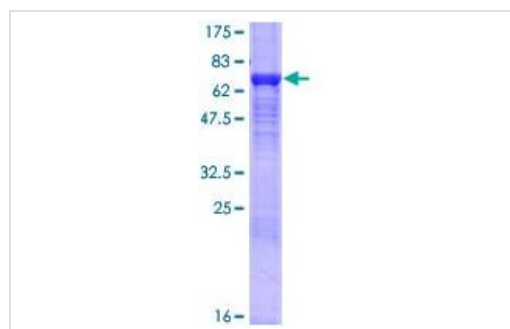
組織特異性	Highly expressed in testis, ovary, small intestine, heart, skeletal muscle, lung and pancreas, but barely detectable in kidney, thymus, colon and peripheral blood leukocytes.
-------	--

配列類似性	Belongs to the importin alpha family. Contains 10 ARM repeats. Contains 1 IBB domain.
-------	---

ドメイン	Consists of an N-terminal hydrophilic region, a hydrophobic central region composed of 10 repeats, and a short hydrophilic C-terminus. The N-terminal hydrophilic region contains the importin beta binding domain (IBB domain), which is sufficient for binding importin beta and essential for nuclear protein import. The IBB domain is thought to act as an intrasteric autoregulatory sequence by interacting with the internal autoinhibitory NLS. Binding of KPNB1 probably overlaps the internal NLS and contributes to a high affinity for cytoplasmic NLS-containing cargo substrates. After dissociation of the importin/substrate complex in the nucleus the internal autoinhibitory NLS contributes to a low affinity for nuclear NLS-containing proteins. The major and minor NLS binding sites are mainly involved in recognition of simple or bipartite NLS motifs. Structurally located within a helical surface groove they contain several conserved Trp and Asn residues of the corresponding third helices (H3) of ARM repeats which mainly contribute to binding.
------	---

細胞内局在	Cytoplasm. Nucleus.
-------	---------------------

画像



SDS-PAGE - Recombinant Human KPNA4 protein
(ab114626)

ab114626 analysed by 12.5% SDS-PAGE and stained with Coomassie Blue.

Please note: All products are "FOR RESEARCH USE ONLY. NOT FOR USE IN DIAGNOSTIC PROCEDURES"

Our Abpromise to you: Quality guaranteed and expert technical support

- Replacement or refund for products not performing as stated on the datasheet
- Valid for 12 months from date of delivery
- Response to your inquiry within 24 hours
- We provide support in Chinese, English, French, German, Japanese and Spanish
- Extensive multi-media technical resources to help you
- We investigate all quality concerns to ensure our products perform to the highest standards

If the product does not perform as described on this datasheet, we will offer a refund or replacement. For full details of the Abpromise, please visit <https://www.abcam.co.jp/abpromise> or contact our technical team.

Terms and conditions

- Guarantee only valid for products bought direct from Abcam or one of our authorized distributors