

Product datasheet

Recombinant Human Kir4.1/KCNJ10 protein ab114456

画像数 1

製品の詳細

製品名	Recombinant Human Kir4.1/KCNJ10 protein
発現系	Wheat germ
アクセッション番号	P78508
タンパク質長	Protein fragment
Animal free	No
由来	Recombinant
生物種	Human
配列	DFELVLILSGTVVESTSATCQVRTSYLPEEILWGYEFTPAILL SASGKYIA DFSLFDQVVKVASPSGLRDSTVRYGDPEKLLKEESLREQAEL EGSALSVR ISNV
予測される分子量	37 kDa including tags
領域	276 to 379

特性

Our **Abpromise guarantee** covers the use of **ab114456** in the following tested applications.

The application notes include recommended starting dilutions; optimal dilutions/concentrations should be determined by the end user.

アプリケーション	Western blot SDS-PAGE ELISA
製品の状態	Liquid
備考	This product was previously labelled as Kir4.1.

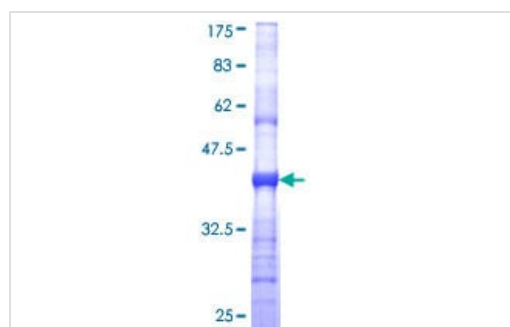
前処理および保存

保存方法および安定性	Shipped on dry ice. Upon delivery aliquot and store at -80°C. Avoid freeze / thaw cycles. pH: 8.00 Constituents: 0.3% Glutathione, 0.79% Tris HCl
------------	---

関連情報

機能	May be responsible for potassium buffering action of glial cells in the brain. Inward rectifier potassium channels are characterized by a greater tendency to allow potassium to flow into the cell rather than out of it. Their voltage dependence is regulated by the concentration of extracellular potassium; as external potassium is raised, the voltage range of the channel opening shifts to more positive voltages. The inward rectification is mainly due to the blockage of outward current by internal magnesium. Can be blocked by extracellular barium and cesium (By similarity). In the kidney, together with KCNJ16, mediates basolateral K(+) recycling in distal tubules; this process is critical for Na(+) reabsorption at the tubules.
組織特異性	Expressed in kidney (at protein level).
関連疾患	Seizures, sensorineural deafness, ataxia, mental retardation, and electrolyte imbalance
配列類似性	Belongs to the inward rectifier-type potassium channel (TC 1.A.2.1) family. KCNJ10 subfamily.
細胞内局在	Membrane. Basolateral cell membrane. In kidney distal convoluted tubules, located in the basolateral membrane where it colocalizes with KCNJ16.

画像



ab114456 analysed on a 12.5% SDS-PAGE stained with Coomassie Blue.

SDS-PAGE - Recombinant Human Kir4.1/KCNJ10 protein (ab114456)

Please note: All products are "FOR RESEARCH USE ONLY. NOT FOR USE IN DIAGNOSTIC PROCEDURES"

Our Abpromise to you: Quality guaranteed and expert technical support

- Replacement or refund for products not performing as stated on the datasheet
- Valid for 12 months from date of delivery
- Response to your inquiry within 24 hours
- We provide support in Chinese, English, French, German, Japanese and Spanish
- Extensive multi-media technical resources to help you
- We investigate all quality concerns to ensure our products perform to the highest standards

If the product does not perform as described on this datasheet, we will offer a refund or replacement. For full details of the Abpromise, please visit <https://www.abcam.co.jp/abpromise> or contact our technical team.

Terms and conditions

- Guarantee only valid for products bought direct from Abcam or one of our authorized distributors