

Recombinant human JAK3 protein (Active) ab89982

画像数 2

製品の詳細

製品名	Recombinant human JAK3 protein (Active)
生理活性	Specific Activity: 500 pmol/min/μg. Assay conditions: 40 mM Tris-HCL pH 7.4, 20 mM MgCl ₂ , 0.1 mg/mL BSA and 0.2 mM DTT using 0.2 mg/ml Poly-(Glu4:Tyr) substrate and 20 mM ATP. Reaction was done at 30°C for 45 min.
精製度	>= 90 % SDS-PAGE. Affinity purified.
発現系	Baculovirus infected insect cells
アクセッション番号	P52333
タンパク質長	Protein fragment
Animal free	No
由来	Recombinant
生物種	Human
実際の分子量	37 kDa including tags
領域	811 to 1124
タグ	His tag N-Terminus
配列の追加情報	NM_000215. N-terminal 10x His tag.

特性

Our **Abpromise guarantee** covers the use of **ab89982** in the following tested applications.

The application notes include recommended starting dilutions; optimal dilutions/concentrations should be determined by the end user.

アプリケーション	Functional Studies
	SDS-PAGE
製品の状態	Liquid

前処理および保存

保存方法および安定性	Shipped on Dry Ice. Store at -80°C.
	pH: 8.00
	Preservative: 1.36% Imidazole

Constituents: 0.63% Tris HCl, 20% Glycerol (glycerin, glycerine), 0.58% Sodium chloride, 0.02% Potassium chloride, 0.05% (R*,R*)-1,4-Dimercaptobutan-2,3-diol

This product is an active protein and may elicit a biological response in vivo, handle with caution.

関連情報

機能	Tyrosine kinase of the non-receptor type, involved in the interleukin-2 and interleukin-4 signaling pathway. Phosphorylates STAT6, IRS1, IRS2 and PI3K.
組織特異性	In NK cells and an NK-like cell line but not in resting T-cells or in other tissues. The S-form is more commonly seen in hematopoietic lines, whereas the B-form is detected in cells both of hematopoietic and epithelial origins.
関連疾患	Defects in JAK3 are a cause of severe combined immunodeficiency autosomal recessive T-cell-negative/B-cell-positive/NK-cell-negative (T(-)B(+)NK(-) SCID) [MIM:600802]. A form of severe combined immunodeficiency (SCID), a genetically and clinically heterogeneous group of rare congenital disorders characterized by impairment of both humoral and cell-mediated immunity, leukopenia, and low or absent antibody levels. Patients present in infancy recurrent, persistent infections by opportunistic organisms. The common characteristic of all types of SCID is absence of T-cell-mediated cellular immunity due to a defect in T-cell development.
配列類似性	Belongs to the protein kinase superfamily. Tyr protein kinase family. JAK subfamily. Contains 1 FERM domain. Contains 1 protein kinase domain. Contains 1 SH2 domain.
ドメイン	Possesses two phosphotransferase domains. The second one probably contains the catalytic domain (By similarity), while the presence of slight differences suggest a different role for domain 1.
翻訳後修飾	Tyrosine phosphorylated in response to IL-2 and IL-4.
細胞内局在	Endomembrane system. Wholly intracellular, possibly membrane associated.

画像

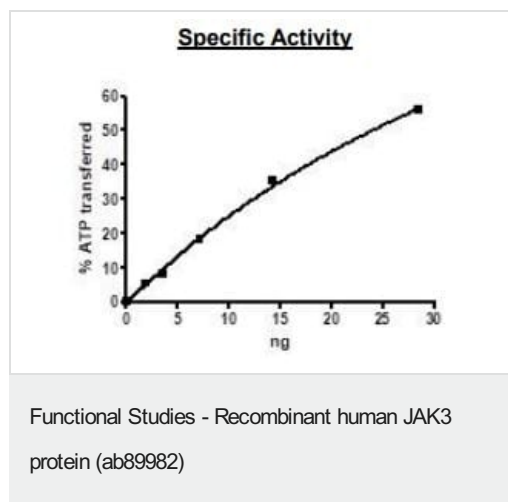
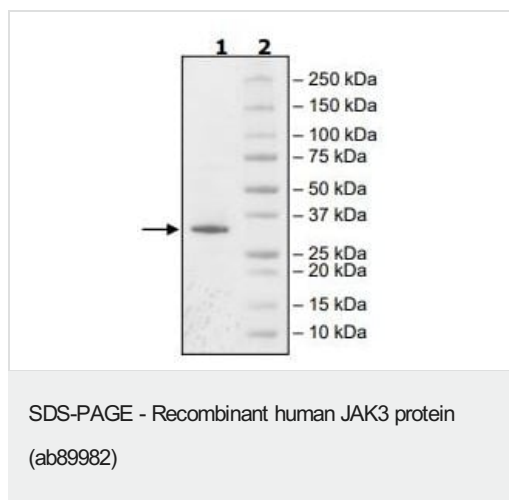


Image showing specific activity of ab89982.



4-20% SDS-page coomassie staining.

Please note: All products are "FOR RESEARCH USE ONLY. NOT FOR USE IN DIAGNOSTIC PROCEDURES"

Our Abpromise to you: Quality guaranteed and expert technical support

- Replacement or refund for products not performing as stated on the datasheet
- Valid for 12 months from date of delivery
- Response to your inquiry within 24 hours
- We provide support in Chinese, English, French, German, Japanese and Spanish
- Extensive multi-media technical resources to help you
- We investigate all quality concerns to ensure our products perform to the highest standards

If the product does not perform as described on this datasheet, we will offer a refund or replacement. For full details of the Abpromise, please visit <https://www.abcam.co.jp/abpromise> or contact our technical team.

Terms and conditions

- Guarantee only valid for products bought direct from Abcam or one of our authorized distributors