

Recombinant human ITK/EMT protein ab60300

画像数 4

製品の詳細

製品名	Recombinant human ITK/EMT protein
生理活性	Specific activity: 58 nmol/min/mg.
精製度	> 90 % Densitometry. Affinity purified.
発現系	Baculovirus infected Sf9 cells
アクセッション番号	<u>Q08881</u>
タンパク質長	Protein fragment
Animal free	No
由来	Recombinant
生物種	Human
予測される分子量	53 kDa
領域	352 to 620
タグ	GST tag N-Terminus
配列の追加情報	Recombinant fragment, corresponding to amino acids 352-end of Human ITK.

特性

Our **Abpromise guarantee** covers the use of **ab60300** in the following tested applications.

The application notes include recommended starting dilutions; optimal dilutions/concentrations should be determined by the end user.

アプリケーション	Functional Studies SDS-PAGE
製品の状態	Liquid
備考	<u>ab43614</u> (Human Myelin Basic Protein full length protein) can be utilized as a substrate for assessing Kinase activity Previously labelled as ITK.

前処理および保存

保存方法および安定性	Shipped on dry ice. Upon delivery aliquot and store at -80°C. Avoid freeze / thaw cycles. pH: 7.50
------------	---

Constituents: 0.0038% EGTA, 0.00174% PMSF, 0.00385% DTT, 0.79% Tris HCl, 0.00292% EDTA, 25% Glycerol (glycerin, glycerine), 0.87% Sodium chloride

This product is an active protein and may elicit a biological response in vivo, handle with caution.

関連情報

機能

Plays a role in T-cell proliferation and differentiation.

組織特異性

T-cell lines and natural killer cell lines.

関連疾患

Defects in ITK are the cause of lymphoproliferative syndrome EBV-associated autosomal type 1 (LPSA1) [MIM:613011]. LPSA1 is a rare immunodeficiency characterized by extreme susceptibility to infection with Epstein-Barr virus (EBV). Inadequate immune response to EBV can have a fatal outcome. Clinical features include splenomegaly, lymphadenopathy, anemia, thrombocytopenia, pancytopenia, recurrent infections. There is an increased risk for lymphoma.

配列類似性

Belongs to the protein kinase superfamily. Tyr protein kinase family. TEC subfamily.

Contains 1 Btk-type zinc finger.

Contains 1 PH domain.

Contains 1 protein kinase domain.

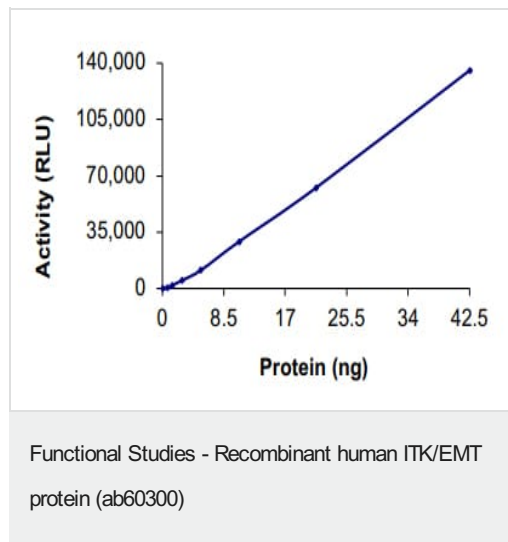
Contains 1 SH2 domain.

Contains 1 SH3 domain.

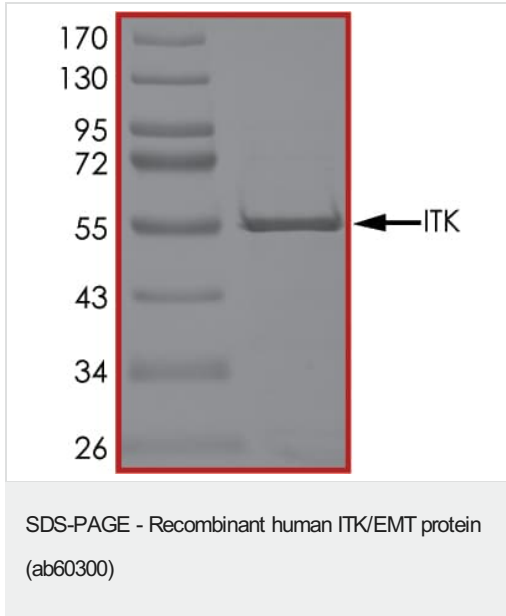
細胞内局在

Cell membrane. Localizes to cell surface receptors in the plasma membrane after stimulation with respective receptors (TCR, CD28, CD2) in T-cells.

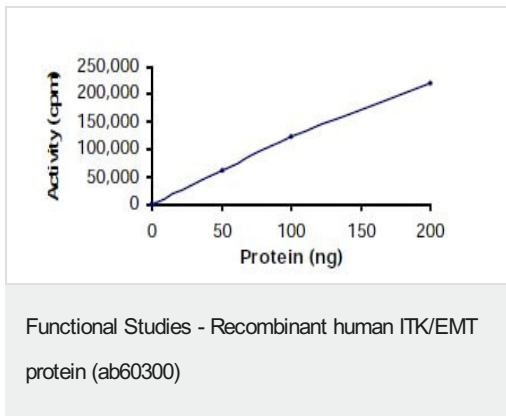
画像



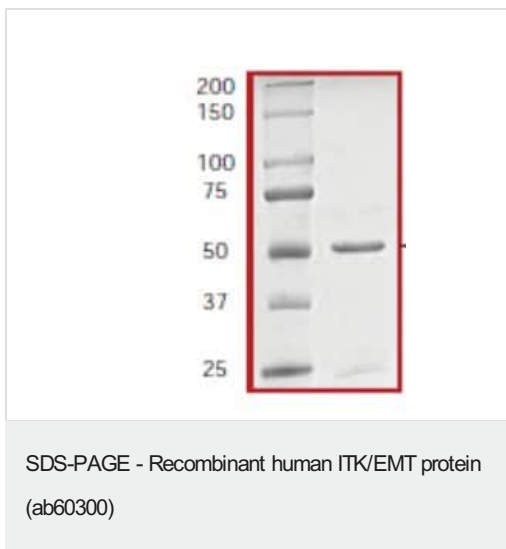
The specific activity of ITK/EMT (ab60300) was determined to be 35 nmol/min/mg as per activity assay protocol and was equivalent to 50 nmol/min/mg as per radiometric assay



SDS PAGE analysis of ab60300



Sample Kinase assay plot.



ab60300 on SDS-PAGE.

Please note: All products are "FOR RESEARCH USE ONLY. NOT FOR USE IN DIAGNOSTIC PROCEDURES"

Our Abpromise to you: Quality guaranteed and expert technical support

- Replacement or refund for products not performing as stated on the datasheet
- Valid for 12 months from date of delivery
- Response to your inquiry within 24 hours
- We provide support in Chinese, English, French, German, Japanese and Spanish
- Extensive multi-media technical resources to help you
- We investigate all quality concerns to ensure our products perform to the highest standards

If the product does not perform as described on this datasheet, we will offer a refund or replacement. For full details of the Abpromise, please visit <https://www.abcam.co.jp/abpromise> or contact our technical team.

Terms and conditions

- Guarantee only valid for products bought direct from Abcam or one of our authorized distributors