

# Recombinant human IPL-1/STK13/Aurora C protein ab63177

画像数 5

### 製品の詳細

---

製品名	Recombinant human IPL-1/STK13/Aurora C protein
生理活性	Specific activity 65nmol/min/mg
精製度	> 80 % Densitometry. Affinity purified.
発現系	Baculovirus infected Sf9 cells
タンパク質長	Full length protein
Animal free	No
由来	Recombinant
生物種	Human

### 特性

---

Our **Abpromise guarantee** covers the use of **ab63177** in the following tested applications.

The application notes include recommended starting dilutions; optimal dilutions/concentrations should be determined by the end user.

アプリケーション	SDS-PAGE Functional Studies
----------	--------------------------------

製品の状態	Liquid
-------	--------

備考	<b>ab43614</b> (Human Myelin Basic Protein full length protein) can be utilized as a substrate for assessing Kinase activity
----	--

### 前処理および保存

---

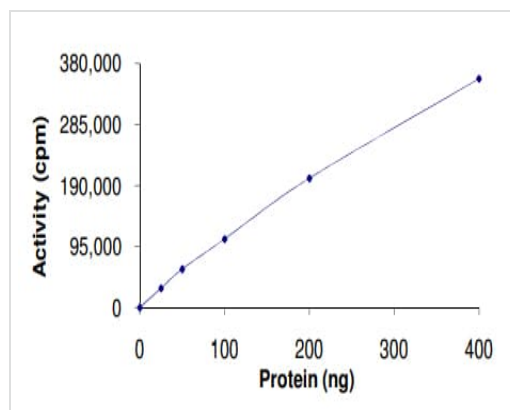
保存方法および安定性	Shipped on dry ice. Upon delivery aliquot and store at -80°C. Avoid freeze / thaw cycles. pH: 7.50 Constituents: 0.0038% EGTA, 0.00174% PMSF, 0.00385% DTT, 0.79% Tris HCl, 0.00292% EDTA, 25% Glycerol (glycerin, glycerine), 0.87% Sodium chloride This product is an active protein and may elicit a biological response in vivo, handle with caution.
------------	--

### 関連情報

---

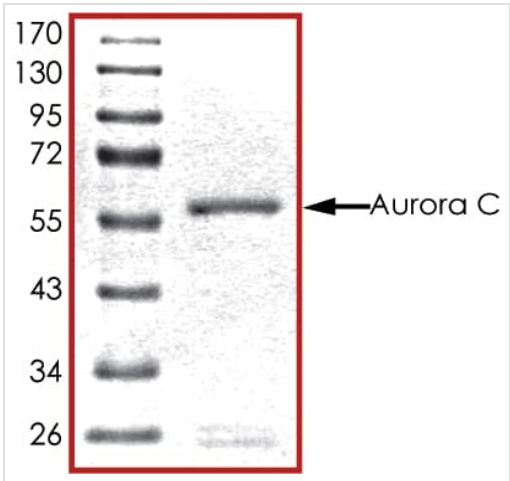
<b>機能</b>	May play a part in organizing microtubules in relation to the function of the centrosome/spindle pole during mitosis. May also contribute to the regulation of chromosome segregation and cytokinesis.
<b>組織特異性</b>	Isoform 1 and isoform 2 are expressed in testis. Elevated expression levels were seen only in a subset of cancer cells such as HepG2, HuH7 and HeLa cells. Expression is maximum at M phase.
<b>関連疾患</b>	Defects in AURKC are the cause of male infertility with large-headed multiflagellar polyploid spermatozoa (MIMPS) [MIM:243060]; also known as infertility associated with multi-tailed spermatozoa and excessive DNA.
<b>配列類似性</b>	Belongs to the protein kinase superfamily. Ser/Thr protein kinase family. Aurora subfamily. Contains 1 protein kinase domain.
<b>細胞内局在</b>	Chromosome. Cytoplasm > cytoskeleton > spindle. Distributes in the condensed chromosomes during prophase to metaphase. After entering anaphase, there is a dissociation from separated chromosomes and a redistribution to midzone microtubules, and finally remains in the midbody during cytokinesis.

## 画像



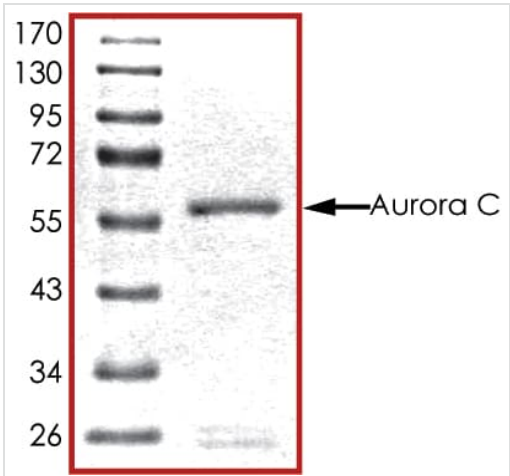
The specific activity of IPL-1/STK13/Aurora C (ab63177) was determined to be 65 nmol/min/mg as per activity assay protocol

Functional Studies - Recombinant human IPL-1/STK13/Aurora C protein (ab63177)



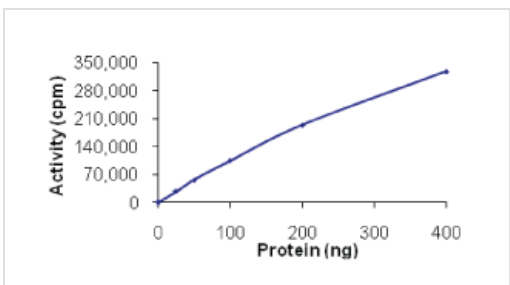
SDS PAGE analysis of ab63177

SDS-PAGE - Recombinant human IPL-1/STK13/Aurora C protein (ab63177)



SDS PAGE analysis of ab63177

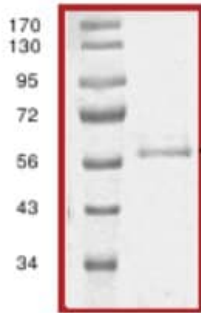
SDS-PAGE - Recombinant human IPL-1/STK13/Aurora C protein (ab63177)



Kinase activity plot

Functional Studies - Recombinant human IPL-1/STK13/Aurora C protein (ab63177)

ab63177 on SDS-PAGE, MW ~61 kDa



SDS-PAGE - Recombinant human IPL-1/STK13/Aurora C protein (ab63177)

**Please note:** All products are "FOR RESEARCH USE ONLY. NOT FOR USE IN DIAGNOSTIC PROCEDURES"

### Our Abpromise to you: Quality guaranteed and expert technical support

---

- Replacement or refund for products not performing as stated on the datasheet
- Valid for 12 months from date of delivery
- Response to your inquiry within 24 hours
- We provide support in Chinese, English, French, German, Japanese and Spanish
- Extensive multi-media technical resources to help you
- We investigate all quality concerns to ensure our products perform to the highest standards

If the product does not perform as described on this datasheet, we will offer a refund or replacement. For full details of the Abpromise, please visit <https://www.abcam.co.jp/abpromise> or contact our technical team.

### Terms and conditions

---

- Guarantee only valid for products bought direct from Abcam or one of our authorized distributors