

Recombinant human Interferon alpha 1 protein (Active) ab48750

8 References [画像数 2](#)

製品の詳細

製品名	Recombinant human Interferon alpha 1 protein (Active)
生理活性	Interferon alpha 1 (ab48750) has the activity of 4×10^5 unit/mg (or 4×10^5 unit/ml). This activity has been tested by evaluating anti-proliferation with Daudi cells. For Further information see Kim et al., 2009.
精製度	> 95 % SDS-PAGE. This protein was purified by conventional chromatography, after refolding of the isolated inclusion bodies in a renaturation buffer.
エンドトキシン・レベル	< 1.000 Eu/μg
発現系	Escherichia coli
アクセッション番号	<u>P01562</u>
タンパク質長	Full length protein
Animal free	No
由来	Recombinant
生物種	Human
配列	CDLPETHSLD NRRTLMLLAQ MSRISPSSCL MDRHDFGFPQ EEFDGNQFQK APAISVLHEL IQQIFNLFTT KDSSAAWDED LLDKFCTELY QQLNDLEACV MQEERVGETP LMNADSILAV KKYFRRITLY LTEKKYSPCA WEVVRAEIMR SLSLSTNLQE RLRRKE
予測される分子量	20 kDa
領域	24 to 189
配列の追加情報	Full length mature protein, without the signal peptide.

特性

Our **Abpromise guarantee** covers the use of **ab48750** in the following tested applications.

The application notes include recommended starting dilutions; optimal dilutions/concentrations should be determined by the end user.

アプリケーション	SDS-PAGE
	Sandwich ELISA

製品の状態

Liquid

備考

Concentration determined by Bradford assay.

Endotoxin levels determined by LAL method.

前処理および保存

保存方法および安定性

Shipped at 4°C. Store at +4°C short term (1-2 weeks). Upon delivery aliquot. Store at -20°C.

Avoid freeze / thaw cycle.

pH: 7.40

Constituent: PBS

This product is an active protein and may elicit a biological response in vivo, handle with caution.

関連情報

機能

Produced by macrophages, IFN-alpha have antiviral activities. Interferon stimulates the production of two enzymes: a protein kinase and an oligoadenylate synthetase.

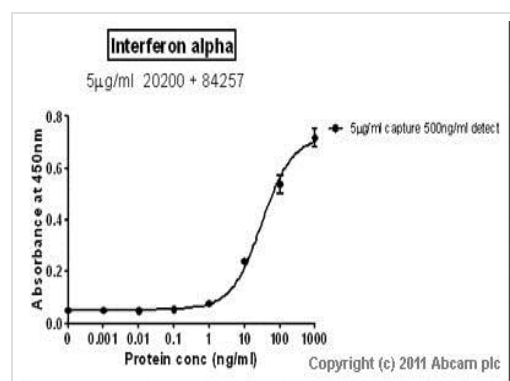
配列類似性

Belongs to the alpha/beta interferon family.

細胞内局在

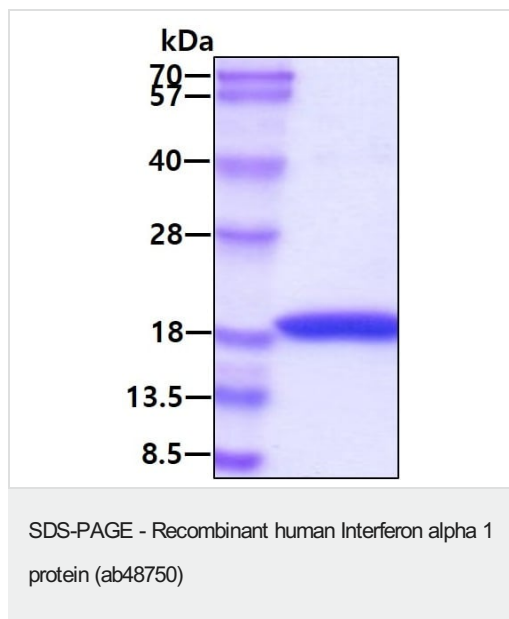
Secreted.

画像



Standard curve for Interferon alpha 1 (Analyte: **ab48750**); dilution range 1pg/ml to 1µg/ml using Capture Antibody **ab20200** at 5µg/ml and Detector Antibody **ab84257** at 0.5µg/ml.

Sandwich ELISA - Recombinant human Interferon alpha 1 protein (ab48750)



3ug of reduced ab48750 on SDS-PAGE, stained with Coomassie Blue.

Please note: All products are "FOR RESEARCH USE ONLY. NOT FOR USE IN DIAGNOSTIC PROCEDURES"

Our Abpromise to you: Quality guaranteed and expert technical support

- Replacement or refund for products not performing as stated on the datasheet
- Valid for 12 months from date of delivery
- Response to your inquiry within 24 hours
- We provide support in Chinese, English, French, German, Japanese and Spanish
- Extensive multi-media technical resources to help you
- We investigate all quality concerns to ensure our products perform to the highest standards

If the product does not perform as described on this datasheet, we will offer a refund or replacement. For full details of the Abpromise, please visit <https://www.abcam.co.jp/abpromise> or contact our technical team.

Terms and conditions

- Guarantee only valid for products bought direct from Abcam or one of our authorized distributors