

# Recombinant Human Integrin linked ILK protein ab83119

画像数 2

### 製品の詳細

製品名	Recombinant Human Integrin linked ILK protein
精製度	> 95 % SDS-PAGE.
発現系	Escherichia coli
アクセッション番号	<b><u>Q13418</u></b>
タンパク質長	Full length protein
Animal free	No
由来	Recombinant
生物種	Human
領域	1 to 452
タグ	His tag N-Terminus

### 特性

Our **Abpromise guarantee** covers the use of **ab83119** in the following tested applications.

The application notes include recommended starting dilutions; optimal dilutions/concentrations should be determined by the end user.

アプリケーション	SDS-PAGE
	Western blot

製品の状態	Liquid
-------	--------

### 前処理および保存

保存方法および安定性	Shipped at 4°C. Upon delivery aliquot and store at -20°C. Avoid freeze / thaw cycles. pH: 7.20 Constituents: PBS, 50% Glycerol
------------	--

### 関連情報

機能	Receptor-proximal protein kinase regulating integrin-mediated signal transduction. May act as a mediator of inside-out integrin signaling. Focal adhesion protein part of the complex ILK-PINCH.
----	--

This complex is considered to be one of the convergence points of integrin- and growth factor-signaling pathway. Could be implicated in mediating cell architecture, adhesion to integrin substrates and anchorage-dependent growth in epithelial cells. Phosphorylates beta-1 and beta-3 integrin subunit on serine and threonine residues, but also AKT1 and GSK3B.

#### 組織特異性

Highly expressed in heart followed by skeletal muscle, pancreas and kidney. Weakly expressed in placenta, lung and liver.

#### 配列類似性

Belongs to the protein kinase superfamily. TKL Ser/Thr protein kinase family.

Contains 5 ANK repeats.

Contains 1 protein kinase domain.

#### ドメイン

A PH-like domain is involved in phosphatidylinositol phosphate binding.

#### 翻訳後修飾

Autophosphorylated on serine residues.

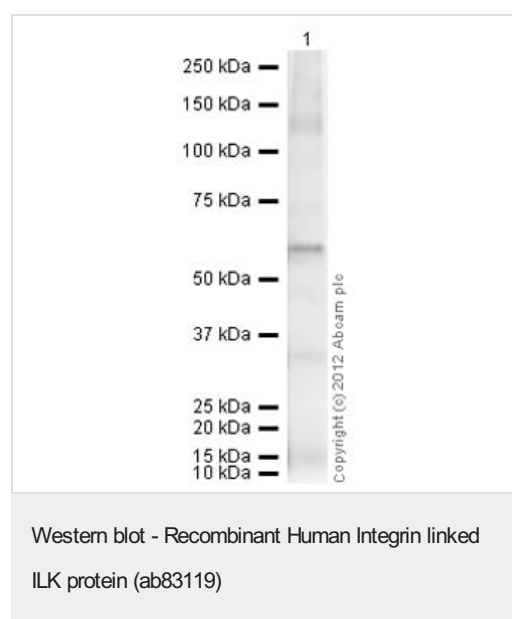
#### 細胞内局在

Cell junction > focal adhesion. Cell membrane.

#### 画像



SDS-PAGE showing ab83119.



**Please note:** All products are "FOR RESEARCH USE ONLY. NOT FOR USE IN DIAGNOSTIC PROCEDURES"

### **Our Abpromise to you: Quality guaranteed and expert technical support**

---

- Replacement or refund for products not performing as stated on the datasheet
- Valid for 12 months from date of delivery
- Response to your inquiry within 24 hours
- We provide support in Chinese, English, French, German, Japanese and Spanish
- Extensive multi-media technical resources to help you
- We investigate all quality concerns to ensure our products perform to the highest standards

If the product does not perform as described on this datasheet, we will offer a refund or replacement. For full details of the Abpromise, please visit <https://www.abcam.co.jp/abpromise> or contact our technical team.

### **Terms and conditions**

---

- Guarantee only valid for products bought direct from Abcam or one of our authorized distributors