

Recombinant Human IMPDH1 protein ab97410

画像数 1

製品の詳細

製品名	Recombinant Human IMPDH1 protein		
精製度	> 95 % SDS-PAGE. ab97410 is purified using conventional chromatography techniques.		
発現系	Escherichia coli		
アクセッション番号	<b><u>P20839</u></b>		
タンパク質長	Full length protein		
Animal free	No		
由来	Recombinant		
生物種	Human		
配列	<i>MGSSHHHHHH SSGLVPRGSH</i> MADYLISGGT GYVPEDGLTA QQLFASADGL TYNDFLILPG FIDFIADEV D LTSALTRKIT LKTPLISSPM DTVTEADMAI AMALMGGIGF IHHNCTPEFQ ANEVRKVKKF EQGFITDPVV LSPSHTVGDV LEAKMRHGFS GIPITETGTM GSKLVGIVTS RDIDFLAEKD HTTLLSEVMT PRIELVVAPA GVTLKEANEI LQRSKKGKLP IVNDCDELVA IIARTDLKKN RDYPLASKDS QKQLLCGAAV GTREDDKYRL DLLTQAGVDV IVLDSSQGNS VYQIAMVHYI KQKYPHLQVI GGNVVTAQA KNLIDAGVDG LRVGMGCGSI CITQEVMACG RPQGTAVYKV AEYARRFGVP IIADGGIQT GHVVKALALG ASTVMMGSLL AATTEAPGEY FFSDGVRLLK YRGMGSLDAM EKSSSSQKRY FSEGDKVKIA QGVSGSIQDK GSIQKFVPYL IAGIQHGCQD IGARSLSVLR SMMYSGELKF EKRTMSAQIE GGVHGLHSYE KRLY		
予測される分子量	58 kDa including tags		
領域	1 to 514		
タグ	His tag N-Terminus		
特性			

Our **Abpromise guarantee** covers the use of **ab97410** in the following tested applications.

The application notes include recommended starting dilutions; optimal dilutions/concentrations should be determined by the end user.

アプリケーション	SDS-PAGE
	Mass Spectrometry
質量分析	MALDI-TOF-TOF
製品の状態	Liquid

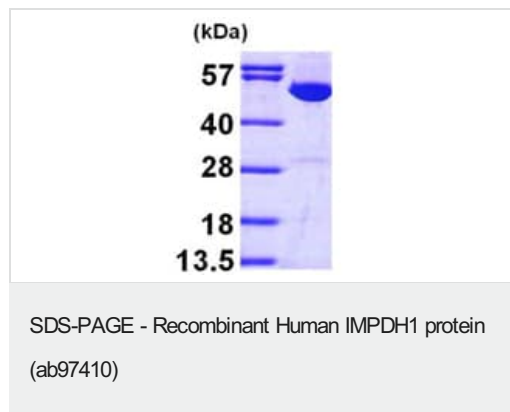
#### 前処理および保存

保存方法および安定性	Shipped at 4°C. Upon delivery aliquot and store at -20°C or -80°C. Avoid repeated freeze / thaw cycles.
	pH: 8.00
	Constituents: 0.0154% DTT, 0.316% Tris HCl, 20% Glycerol (glycerin, glycerine)

#### 関連情報

機能	Rate limiting enzyme in the de novo synthesis of guanine nucleotides and therefore is involved in the regulation of cell growth. It may also have a role in the development of malignancy and the growth progression of some tumors.
組織特異性	IMP type I is the main species in normal leukocytes and type II predominates over type I in the tumor.
パスウェイ	Purine metabolism; XMP biosynthesis via de novo pathway; XMP from IMP: step 1/1.
関連疾患	Defects in IMPDH1 are the cause of retinitis pigmentosa type 10 (RP10) [MIM:180105]. RP leads to degeneration of retinal photoreceptor cells. Patients typically have night vision blindness and loss of midperipheral visual field. As their condition progresses, they lose their far peripheral visual field and eventually central vision as well. RP10 inheritance is autosomal dominant.
配列類似性	Belongs to the IMPDH/GMPR family. Contains 2 CBS domains.

#### 画像



15% SDS-PAGE showing ab97410 at approximately 57.5kDa (3μg).

**Please note:** All products are "FOR RESEARCH USE ONLY. NOT FOR USE IN DIAGNOSTIC PROCEDURES"

### **Our Abpromise to you: Quality guaranteed and expert technical support**

---

- Replacement or refund for products not performing as stated on the datasheet
- Valid for 12 months from date of delivery
- Response to your inquiry within 24 hours
  
- We provide support in Chinese, English, French, German, Japanese and Spanish
- Extensive multi-media technical resources to help you
- We investigate all quality concerns to ensure our products perform to the highest standards

If the product does not perform as described on this datasheet, we will offer a refund or replacement. For full details of the Abpromise, please visit <https://www.abcam.co.jp/abpromise> or contact our technical team.

### **Terms and conditions**

---

- Guarantee only valid for products bought direct from Abcam or one of our authorized distributors