

Recombinant human IL-4 protein ab83686

2 References [画像数 2](#)

製品の詳細

製品名	Recombinant human IL-4 protein
生理活性	Activity: The ED ₅₀ of ab83686 is typically 0.02 - 0.2 ng/ml as measured in a cell proliferation assay using the human growth factor-dependent TF1 cell line.
精製度	> 95 % SDS-PAGE.
発現系	HEK 293 cells
タンパク質長	Full length protein
Animal free	No
由来	Recombinant
生物種	Human
配列	<p>Theoretical Sequence:</p> <p>HKCDITLQEIIKTLNSLTEQKTLCTELTVTDIFAASKNT</p> <p>TEKETFCRAATVLRQFYSHHEKDTRCL</p> <p>GATAQQFHRHKQLIRFLKRLD</p> <p>RNLWGLAGLNSCPVKEANQSTLENFLERLKTIMREKYSKCSS</p>

特性

Our **Abpromise guarantee** covers the use of **ab83686** in the following tested applications.

The application notes include recommended starting dilutions; optimal dilutions/concentrations should be determined by the end user.

アプリケーション	Functional Studies
	SDS-PAGE
製品の状態	Lyophilized

前処理および保存

保存方法および安定性	<p>Shipped at 4°C. After reconstitution store at -20°C. Avoid freeze / thaw cycles.</p> <p>Constituents: PBS, 1% Human serum albumin, 10% Trehalose</p> <p>This product is an active protein and may elicit a biological response in vivo, handle with caution.</p>
再構成	It is recommended that 0.5 ml of sterile phosphate-buffered saline be added to the vial. Following

reconstitution short-term storage at 4°C is recommended, with longer-term storage in aliquots at -18 to -20°C. Repeated freeze thawing is not recommended.

関連情報

機能

Participates in at least several B-cell activation processes as well as of other cell types. It is a costimulator of DNA-synthesis. It induces the expression of class II MHC molecules on resting B-cells. It enhances both secretion and cell surface expression of IgE and IgG1. It also regulates the expression of the low affinity Fc receptor for IgE (CD23) on both lymphocytes and monocytes.

関連疾患

Genetic variations in IL4 may be a cause of susceptibility to ischemic stroke (ISCHSTR) [MIM:601367]; also known as cerebrovascular accident or cerebral infarction. A stroke is an acute neurologic event leading to death of neural tissue of the brain and resulting in loss of motor, sensory and/or cognitive function. Ischemic strokes, resulting from vascular occlusion, is considered to be a highly complex disease consisting of a group of heterogeneous disorders with multiple genetic and environmental risk factors.

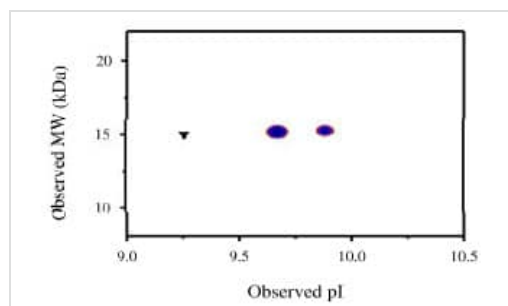
配列類似性

Belongs to the IL-4/IL-13 family.

細胞内局在

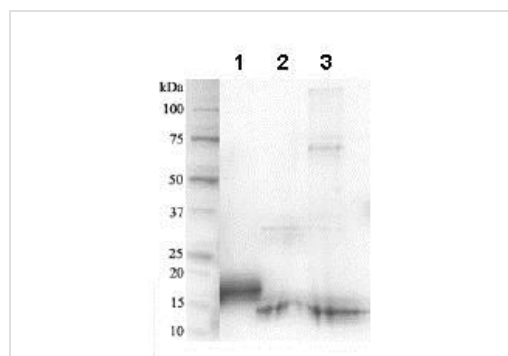
Secreted.

画像



Densitometry of protein isoforms visualised by 2-DE. The triangle indicates the theoretical MW and pI of the protein.

Functional Studies - Recombinant human IL-4 protein (ab83686)



1D SDS-PAGE of ab83686 before and after treatment with glycosidases to remove oligosaccharides. A drop in the observed MW after treatment indicates the presence of glycosylation.

Lane 1: ab83686

Lane 2: ab83686 treated with PNGase F to remove potential N-linked glycans

Lane 3: ab83686 treated with a glycosidase cocktail to remove potential N- and O-linked glycans. 10 µg protein loaded per lane; Deep Purple™ stained.

Additional bands in lane 2 and lane 3 are glycosidase enzymes.

SDS-PAGE - Recombinant human IL-4 protein (ab83686)

Our Abpromise to you: Quality guaranteed and expert technical support

- Replacement or refund for products not performing as stated on the datasheet
- Valid for 12 months from date of delivery
- Response to your inquiry within 24 hours

- We provide support in Chinese, English, French, German, Japanese and Spanish
- Extensive multi-media technical resources to help you
- We investigate all quality concerns to ensure our products perform to the highest standards

If the product does not perform as described on this datasheet, we will offer a refund or replacement. For full details of the Abpromise, please visit <https://www.abcam.co.jp/abpromise> or contact our technical team.

Terms and conditions

- Guarantee only valid for products bought direct from Abcam or one of our authorized distributors