

Recombinant human IL-2 Receptor alpha protein (Fc Chimera)  
ab84071

画像数 3

製品の詳細

製品名	Recombinant human IL-2 Receptor alpha protein (Fc Chimera)
精製度	> 95 % SDS-PAGE.
発現系	HEK 293 cells
アクセッション番号	<b>P01589</b>
タンパク質長	Protein fragment
Animal free	No
由来	Recombinant
生物種	Human
配列	

Theoretical Sequence:  
ELCDDDPPEIPHATFKAMAYKEGTM LNCECKRGFRRIKSGSL  
YMLCTG  
NSSHSSWDNQCQCTSSATRN TTKQVTPQPEEQKERKTTEMQS  
PMQPVD  
QASLPGHCREPPPWENEATERIYHFVVGQMVYYQCVQGYRAL  
HRGPAE  
SVCKMTHGKTRWTQPQLICTGEMETSQFPGEEKPQASPEGRP  
ESETSC  
LVTTTDFQIQTEMAATMETSIFTTGIPKVDKKVEPKSCDKTH  
TCPPCP  
APELLGGPSVFLFPPKPKDTLMISRTPEVTCVVVDVSHEDPE  
VKFNWY  
VDGVEVHNAKTKPREEQYNSTYRVVSVLTVLHQDWLNGKEYK  
CKVSNK  
ALPAPIEKTISKAKGQPREPQVYTLPPSRDELTKNQVSLTCL  
VKGFYP  
SDIAVEWESNGQPENNYKTTTPVLDSGDSFFLYSKLTVDKSR  
WQQGNV FSCSVMHEALHNHYTQKSLSLSPGK

領域 22 to 237

特性

Our **Abpromise guarantee** covers the use of **ab84071** in the following tested applications.

The application notes include recommended starting dilutions; optimal dilutions/concentrations should be determined by the end user.

アプリケーション SDS-PAGE

製品の状態 Lyophilized

備考 ab84071 bound to protein A sepharose beads is able to pull down its ligand, IL2.

## 前処理および保存

保存方法および安定性 Shipped at 4°C. After reconstitution store at -20°C. Avoid freeze / thaw cycles.

Constituents: 1% Human serum albumin, 10% Trehalose

This product is an active protein and may elicit a biological response in vivo, handle with caution.

再構成 It is recommended that 0.5 ml of sterile phosphate-buffered saline be added to the vial. Following reconstitution short-term storage at 4°C is recommended, and longer-term storage of aliquots at -18 to -20°C. Repeated freeze thawing is not recommended.

## 関連情報

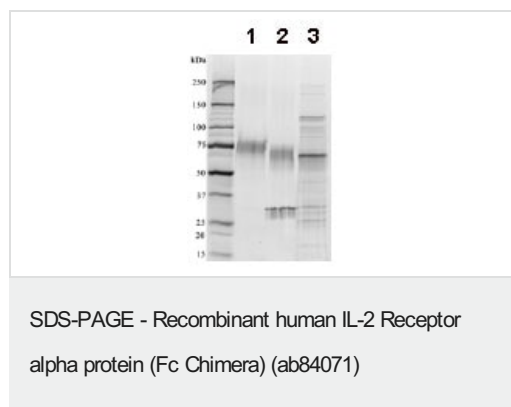
機能 Receptor for interleukin-2.

関連疾患 Genetic variations in IL2RA are associated with susceptibility to diabetes mellitus insulin-dependent type 10 (IDDM10) [MIM:601942]. A multifactorial disorder of glucose homeostasis that is characterized by susceptibility to ketoacidosis in the absence of insulin therapy. Clinical features are polydipsia, polyphagia and polyuria which result from hyperglycemia-induced osmotic diuresis and secondary thirst. These derangements result in long-term complications that affect the eyes, kidneys, nerves, and blood vessels.

配列類似性 Contains 2 Sushi (CCP/SCR) domains.

細胞内局在 Membrane.

## 画像



1D SDS-PAGE of ab84071 before and after treatment with glycosidases to remove oligosaccharides.

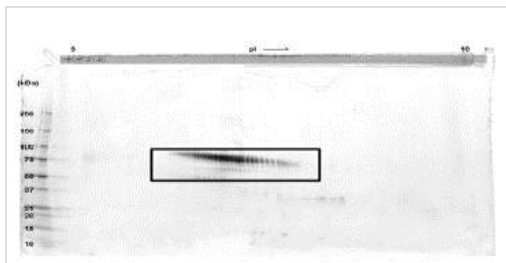
Lane 1: ab84071

Lane 2: ab84071 treated with PNGase F to remove potential N-linked glycans

Lane 3: ab84071 treated with a glycosidase cocktail to remove potential N- and O-linked glycans.

10 µg protein loaded per lane; Deep Purple™ stained.

Drop in MW after treatment with PNGase F indicates presence of N-linked glycans. Subsequent tightening of band after treatment with glycosidase cocktail suggests presence of O-linked glycans. Additional bands in lane 2 and lane 3 are glycosidase enzymes.

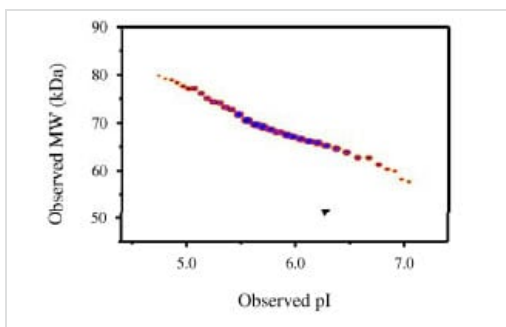


SDS-PAGE - Recombinant human IL-2 Receptor alpha protein (Fc Chimera) (ab84071)

A sample of ab84071 without carrier protein was reduced and alkylated and focused on a 3-10 IPG strip then run on a 4-20% Tris-HCl 2D gel.

40µg protein loaded per lane; Deep Purple™ stained. Spot train indicates presence of multiple isoforms.

Spots within the spot train were cut from the gel and identified as IL2 Receptor alpha (Fc Chimera) by protein mass fingerprinting.



Functional Studies - Recombinant human IL-2 Receptor alpha protein (Fc Chimera) (ab84071)

Densitometry of protein isoforms visualised by 2-DE.

The densitometry scan demonstrates the purified human cell expressed protein exists in multiple isoforms, which differ according to their level of post-translational modification.

The triangle indicates the theoretical MW and pI of the protein.

**Please note:** All products are "FOR RESEARCH USE ONLY. NOT FOR USE IN DIAGNOSTIC PROCEDURES"

### Our Abpromise to you: Quality guaranteed and expert technical support

- Replacement or refund for products not performing as stated on the datasheet
- Valid for 12 months from date of delivery
- Response to your inquiry within 24 hours
- We provide support in Chinese, English, French, German, Japanese and Spanish
- Extensive multi-media technical resources to help you
- We investigate all quality concerns to ensure our products perform to the highest standards

If the product does not perform as described on this datasheet, we will offer a refund or replacement. For full details of the Abpromise, please visit <https://www.abcam.co.jp/abpromise> or contact our technical team.

### Terms and conditions

- Guarantee only valid for products bought direct from Abcam or one of our authorized distributors