

Recombinant Human IKK beta protein ab114243

[1 References](#) [画像数 2](#)

製品の詳細

製品名	Recombinant Human IKK beta protein
発現系	Wheat germ
アクセッション番号	<u>O14920</u>
タンパク質長	Full length protein
Animal free	No
由来	Recombinant
生物種	Human
配列	MSWSPSLTTQTCGAWEMKERLGTGGFGNVIRWHNQETGEQIA IKQCRQEL SPRNRERWCLEIQIMRRLTHPNVVAARDVPEGMQNLAPNDLP LLAMEYCQ GGDLRKLYLNQFENCCGLREGAILTLLSDIASALRYLHENRII HRDLKPEN IVLQQGEQRLIHKIIDLGYAKELDQGSLECTSFVGTLLQYLPE LLEQQKYT VTVDYWSFGTLAFECITGFRPFLPNWQPVQCVRMWPGTVAHS CNPSTLGG RGRWIS
予測される分子量	54 kDa including tags
領域	1 to 256
タグ	GST tag N-Terminus

特性

Our **Abpromise guarantee** covers the use of **ab114243** in the following tested applications.

The application notes include recommended starting dilutions; optimal dilutions/concentrations should be determined by the end user.

アプリケーション	ELISA
	SDS-PAGE
	Western blot

製品の状態 Liquid

前処理および保存

保存方法および安定性

Shipped on dry ice. Upon delivery aliquot and store at -80°C. Avoid freeze / thaw cycles.

pH: 8.00

Constituents: 0.3% Glutathione, 0.79% Tris HCl

関連情報**機能**

Acts as part of the IKK complex in the conventional pathway of NF-kappa-B activation and phosphorylates inhibitors of NF-kappa-B thus leading to the dissociation of the inhibitor/NF-kappa-B complex and ultimately the degradation of the inhibitor. Also phosphorylates NCOA3.

組織特異性

Highly expressed in heart, placenta, skeletal muscle, kidney, pancreas, spleen, thymus, prostate, testis and peripheral blood.

配列類似性

Belongs to the protein kinase superfamily. Ser/Thr protein kinase family. I-kappa-B kinase subfamily.

Contains 1 protein kinase domain.

翻訳後修飾

Upon cytokine stimulation, phosphorylated on Ser-177 and Ser-181 by MEKK1 and/or MAP3K14/NIK; which enhances activity. Once activated, autophosphorylates on the C-terminal serine cluster; which decreases activity and prevents prolonged activation of the inflammatory response.

Acetylation of Thr-180 by Yersinia yopJ prevents phosphorylation and activation, thus blocking the I-kappa-B pathway.

Ubiquitinated. Monoubiquitination involves TRIM21 that leads to inhibition of Tax-induced NF-kappa-B signaling. According to PubMed:19675099, 'Ser-163' does not serve as a monoubiquitination site. According to PubMed:16267042, ubiquitination on 'Ser-163' modulates phosphorylation on C-terminal serine residues. Monoubiquitination by TRIM21 is disrupted by Yersinia yopJ.

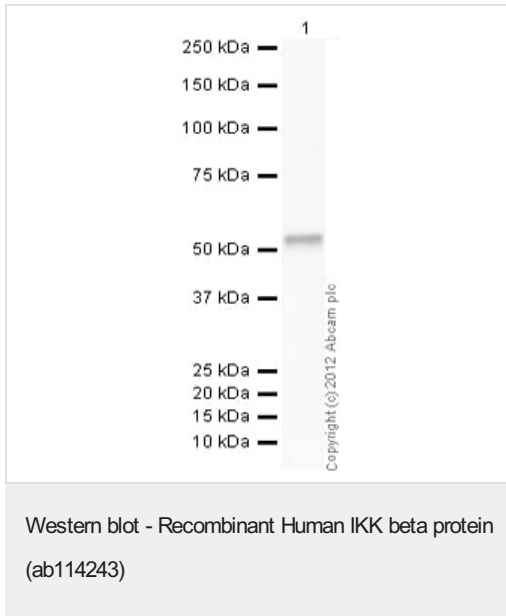
細胞内局在

Cytoplasm. Membrane raft. Colocalized with DPP4 in membrane rafts.

画像

12.5% SDS-PAGE showing ab114243 at approximately 53.79kDa stained with Coomassie Blue.

SDS-PAGE - Recombinant Human IKK beta protein (ab114243)



Anti-IKK beta antibody (**ab55404**) at 1/1000 dilution + Recombinant Human IKK beta protein (ab114243) at 0.1 µg

Secondary

Goat Anti-Rabbit IgG H&L (HRP) preadsorbed (**ab97080**) at 1/5000 dilution

Developed using the ECL technique.

Performed under reducing conditions.

Exposure time: 1 minute

Please note: All products are "FOR RESEARCH USE ONLY. NOT FOR USE IN DIAGNOSTIC PROCEDURES"

Our Abpromise to you: Quality guaranteed and expert technical support

- Replacement or refund for products not performing as stated on the datasheet
- Valid for 12 months from date of delivery
- Response to your inquiry within 24 hours
- We provide support in Chinese, English, French, German, Japanese and Spanish
- Extensive multi-media technical resources to help you
- We investigate all quality concerns to ensure our products perform to the highest standards

If the product does not perform as described on this datasheet, we will offer a refund or replacement. For full details of the Abpromise, please visit <https://www.abcam.co.jp/abpromise> or contact our technical team.

Terms and conditions

- Guarantee only valid for products bought direct from Abcam or one of our authorized distributors