

Recombinant human IGFBP1 protein ab50216

画像数 1

製品の詳細

製品名	Recombinant human IGFBP1 protein
生理活性	Biological Activity : The ED ₅₀ , as determined by its ability to inhibit IGF-I induced proliferation of MCF-7, is < 0.5 µg/ml in the presence of 6 ng/ml of human IGF-I.
精製度	> 98 % SDS-PAGE. Greater than 98% by HPLC analyses. Endotoxin level is less than 0.1 ng per g (1EU/g).
発現系	Escherichia coli
タンパク質長	Full length protein
Animal free	No
由来	Recombinant
生物種	Human
配列	MAPWQCAPCS AEKLALCPPV SASCSEVTRS AGCGCCPMCA LPLGAACGVA TARCARGLSC RALPGEQQPL HALTRGQGAC VQESDASAPH AAEGSPESP ESTEITEEEL LDNFHLMAPS EEDHSILWDA ISTYDGSKAL HVTNIKKWKE PCRIELYRVV ESLAKAQETS GEEISKFYLP NCNKNGFYHS RQCETSMDGE AGLCWCVPWP NGKRIPGSPE IRGDPNCQIY FNVQN

特性

Our **Abpromise guarantee** covers the use of **ab50216** in the following tested applications.

The application notes include recommended starting dilutions; optimal dilutions/concentrations should be determined by the end user.

アプリケーション	Western blot
	SDS-PAGE
	Functional Studies
製品の状態	Lyophilized

前処理および保存

保存方法および安定性	Shipped at 4°C. The lyophilized protein is stable for a few weeks at room temperature. Store at -
------------	---

20°C long term.

This product is an active protein and may elicit a biological response in vivo, handle with caution.

再構成

Reconstitute to 1mg/ml with sterile water.

関連情報

機能

IGF-binding proteins prolong the half-life of the IGFs and have been shown to either inhibit or stimulate the growth promoting effects of the IGFs on cell culture. They alter the interaction of IGFs with their cell surface receptors. Promotes cell migration.

配列類似性

Contains 1 IGFBP N-terminal domain.

Contains 1 thyroglobulin type-1 domain.

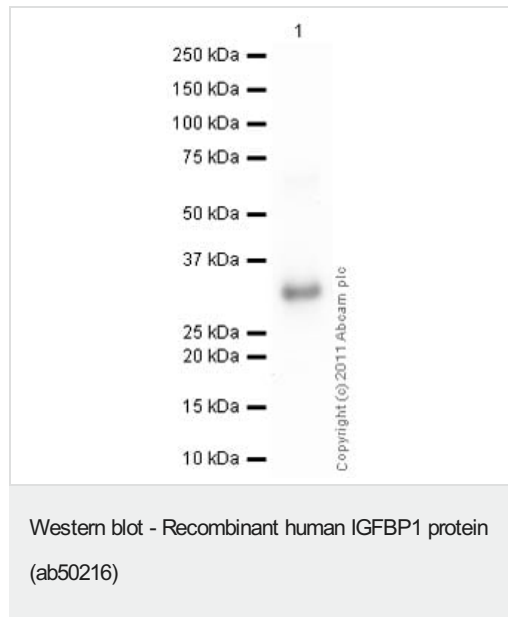
翻訳後修飾

Phosphorylated; probably by casein kinase II. Alters the affinity of the protein for IGFs.

細胞内局在

Secreted.

画像



Anti-IGFBP1 antibody [33627.11] ([ab94985](#)) at 1 µg/ml +
Recombinant human IGFBP1 protein (ab50216) at 0.1 µg

Secondary

Goat Anti-Mouse IgG H&L (HRP) preadsorbed ([ab97040](#)) at
1/5000 dilution

Developed using the ECL technique.

Performed under reducing conditions.

Exposure time: 30 seconds

Please note: All products are "FOR RESEARCH USE ONLY. NOT FOR USE IN DIAGNOSTIC PROCEDURES"

Our Abpromise to you: Quality guaranteed and expert technical support

- Replacement or refund for products not performing as stated on the datasheet
- Valid for 12 months from date of delivery
- Response to your inquiry within 24 hours
- We provide support in Chinese, English, French, German, Japanese and Spanish
- Extensive multi-media technical resources to help you
- We investigate all quality concerns to ensure our products perform to the highest standards

If the product does not perform as described on this datasheet, we will offer a refund or replacement. For full details of the Abpromise, please visit <https://www.abcam.co.jp/abpromise> or contact our technical team.

Terms and conditions

- Guarantee only valid for products bought direct from Abcam or one of our authorized distributors