

Recombinant Human IFITM2 protein ab92922

画像数 1

製品の詳細

製品名	Recombinant Human IFITM2 protein
精製度	> 90 % SDS-PAGE.
発現系	Escherichia coli
タンパク質長	Full length protein
Animal free	No
由来	Recombinant
生物種	Human

特性

Our **Abpromise guarantee** covers the use of **ab92922** in the following tested applications.

The application notes include recommended starting dilutions; optimal dilutions/concentrations should be determined by the end user.

アプリケーション	Western blot
	ELISA
	SDS-PAGE
	Mass Spectrometry

製品の状態	Solid
-------	-------

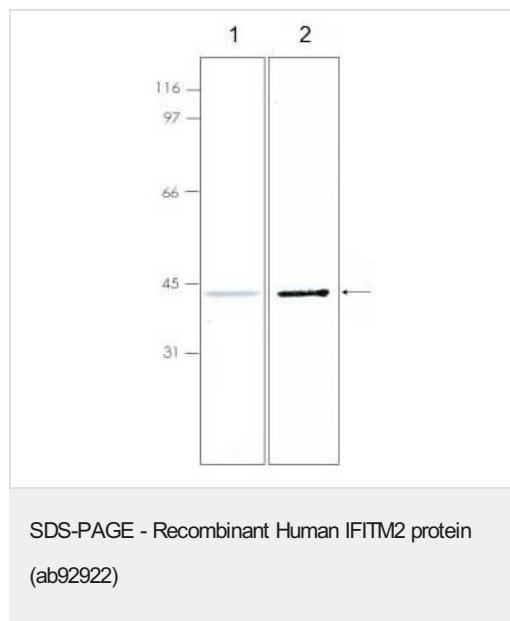
前処理および保存

保存方法および安定性	Shipped on dry ice. Upon delivery aliquot and store at -80°C. Avoid freeze / thaw cycles.
	pH: 8.00
	Preservative: 0.68% Imidazole
	Constituents: 0.0078% Beta mercaptoethanol, 0.316% Tris HCl, 2.9% Sodium chloride

関連情報

関連性	IFITM2 belongs to the CD225 family and is induced by alpha and gamma interferons.
細胞内局在	Membrane; Multipass membrane protein

画像



ab92922 analysed on 10% SDS-PAGE and stained with Coomassie Blue (1) or detected by western blot analysis with an antibody to the proprietary tag (2).

Please note: All products are "FOR RESEARCH USE ONLY. NOT FOR USE IN DIAGNOSTIC PROCEDURES"

Our Abpromise to you: Quality guaranteed and expert technical support

- Replacement or refund for products not performing as stated on the datasheet
- Valid for 12 months from date of delivery
- Response to your inquiry within 24 hours
- We provide support in Chinese, English, French, German, Japanese and Spanish
- Extensive multi-media technical resources to help you
- We investigate all quality concerns to ensure our products perform to the highest standards

If the product does not perform as described on this datasheet, we will offer a refund or replacement. For full details of the Abpromise, please visit <https://www.abcam.co.jp/abpromise> or contact our technical team.

Terms and conditions

- Guarantee only valid for products bought direct from Abcam or one of our authorized distributors