

Recombinant human Hsp70 protein ab78433

1 References [画像数 2](#)

製品の詳細

製品名	Recombinant human Hsp70 protein
生理活性	ab78433 has ATPase activity at the time of manufacture of 3.0μM phosphate liberated/hr/μg protein in a 200μl reaction at 37°C (pH7.5) in the presence of 20ul of 1mM ATP using a Malachite Green assay.
精製度	> 95 % SDS-PAGE.
発現系	Escherichia coli
タンパク質長	Full length protein
Animal free	No
由来	Recombinant
生物種	Human
配列	AKAAAIIGIDLGTTYSCVGVFQHGKVEIIANDQGNRTTPSYVA FTDTERLI GDAAKNQVALNPQNTVFDKRLIGRKFGDPVVQSDMKHWPFG VINDGDKP KVQVSYKGETKAFYPEEISSMVLTKMKEIAEAYLGYPVTNAV ITVPAYFN DSQRQATKDAGVIAGLNVLRINEPTAAAIAYGLDRTGKGER NVLIFDLG GGTFDVSILTIDDGIFEVKATAGDTHLGGEDFDNRLVNHFVE EFKRKHKK DISQNKRAVRRRLTACERAKRTLSSSTQASLEIDSLFEGIDF YTSITRAR FEELCSDLFRSTLEPVEKALRDAKLDKAQIHDLVLVGGSTRI PKVQKLLQ DFFNGRDLNKSINPDEAVAYGAAVQAAILMGDKSENVQDLLL LDVAPLSL GLETAGGVMTALIKRNSTIPTKQTQIFTTYSDNQPGVLIQVY EGERAMTK DNNLLGRFELSGIPPAPRGVPQIEVTFDIDANGILNVTATDK STGKANKI TITNDKGRLSKEEIERMVQEAKEYKAEDEVQRERVSANKALE SYAFNMKS AVEDEGLKGKISEADKKKVLDKCQEVISWLDANTLAEKDEFE

HKRKELEQ
VCNPIISGLYQGAGGPGPGGFGAQQGPKGGSGSGPTIEEVD

予測される分子量 70 kDa
領域 1 to 641

特性

Our **Abpromise guarantee** covers the use of **ab78433** in the following tested applications.

The application notes include recommended starting dilutions; optimal dilutions/concentrations should be determined by the end user.

アプリケーション Western blot
ELISA
Functional Studies
Competitive Binding Assays
SDS-PAGE

製品の状態 Liquid

前処理および保存

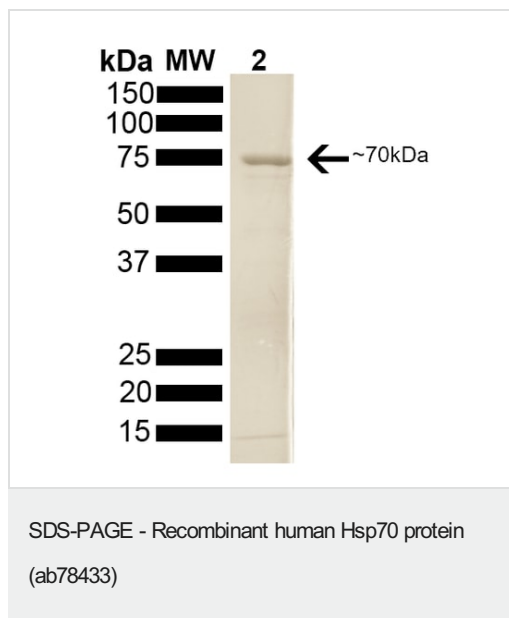
保存方法および安定性 Shipped at 4°C. Store at -20°C. Stable for 12 months at -20°C.
Constituents: 0.242% Tris, 0.0154% DTT, 0.0475% Magnesium chloride, 0.375% Potassium chloride
This product is an active protein and may elicit a biological response in vivo, handle with caution.

関連情報

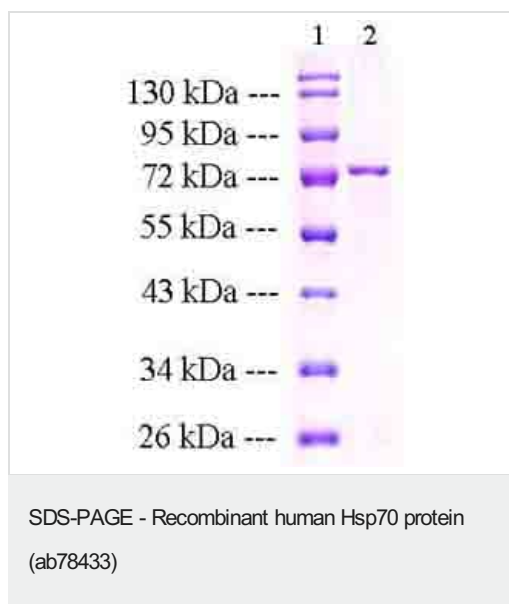
関連性 Function: In cooperation with other chaperones, the Hsp70 family stabilize preexistent proteins against aggregation and mediate the folding of newly translated polypeptides in the cytosol as well as within organelles. These chaperones participate in all these processes through their ability to recognize nonnative conformations of other proteins. They bind extended peptide segments with a net hydrophobic character exposed by polypeptides during translation and membrane translocation, or following stress-induced damage. In case of rotavirus A infection, serves as a post-attachment receptor for the virus to facilitate entry into the cell. Tissue specificity: HSPA1B is testis-specific.

細胞内局在 Cytoplasm. Localized in cytoplasmic mRNP granules containing untranslated mRNAs.

画像



SDS-PAGE of 70kDa Hsp70 protein.



Lane 1. Molecular weight ladder

Lane 2. Hsp70 protein

Please note: All products are "FOR RESEARCH USE ONLY. NOT FOR USE IN DIAGNOSTIC PROCEDURES"

Our Abpromise to you: Quality guaranteed and expert technical support

- Replacement or refund for products not performing as stated on the datasheet
- Valid for 12 months from date of delivery
- Response to your inquiry within 24 hours

- We provide support in Chinese, English, French, German, Japanese and Spanish
- Extensive multi-media technical resources to help you
- We investigate all quality concerns to ensure our products perform to the highest standards

If the product does not perform as described on this datasheet, we will offer a refund or replacement. For full details of the Abpromise, please visit <https://www.abcam.co.jp/abpromise> or contact our technical team.

Terms and conditions

- Guarantee only valid for products bought direct from Abcam or one of our authorized distributors