

Recombinant Human HLA DMA protein ab116751

画像数 1

製品の詳細

製品名	Recombinant Human HLA DMA protein
発現系	Wheat germ
アクセッション番号	<u>P28067</u>
タンパク質長	Full length protein
Animal free	No
由来	Recombinant
生物種	Human
配列	MGHEQNQGAALLQMLPLLWLLPHSWAVPEAPTPMWPDDLQNH TFLHTVYC QDGSPSVGLSEAYDEDQLFFFDQSQNTRVPRLPEFADWAQEQ GDAPAILF DKEFCEWMIQQIGPKLDGKIPVSRGFPIAEVFTLKPLEFGKP NTLVCFVS NLFPPMLTVNWQHHSVPVEGFGPTFVSAVDGLSFQAFSYLNF TPEPSDIF SCIVTHEIDRYTAIAYWVPRNALPSDLLENVLCGVAFGLGVL GIIVGIVL IIYFRKPCSGD
予測される分子量	54 kDa
領域	1 to 261

特性

Our **Abpromise guarantee** covers the use of **ab116751** in the following tested applications.

The application notes include recommended starting dilutions; optimal dilutions/concentrations should be determined by the end user.

アプリケーション	ELISA
	SDS-PAGE
	Western blot
製品の状態	Liquid

前処理および保存

保存方法および安定性

Shipped on dry ice. Upon delivery aliquot and store at -80°C. Avoid freeze / thaw cycles.

pH: 8.00

Constituents: 0.3% Glutathione, 0.79% Tris HCl

関連情報

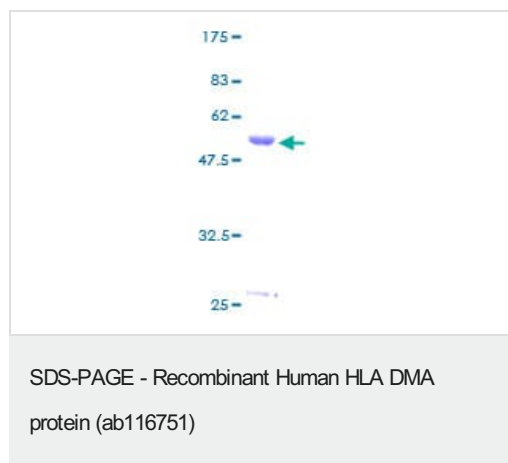
関連性

Human Leukocyte Antigens are highly polymorphic proteins that are involved in the presentation of antigens to the T-cell receptor. There are two classes of HLA antigens, class I (HLA-A, HLA-B and HLA-C) and class II (HLA-D). This antibody can be used for HLA typing. HLA DM plays a critical role in catalyzing the release of class II HLA-associated invariant chain-derived peptides (CLIP) from newly synthesized class II HLA molecules and freeing the peptide binding site for acquisition of antigenic peptides.

細胞内局在

Late endosome membrane; Single-pass type I membrane protein. Lysosome membrane; Single-pass type I membrane protein. Note: Localizes to late endocytic compartment. Associates with lysosome membranes.

画像



12.5% SDS-PAGE analysis of ab116751 at approximately 54.45kDa, stained with Coomassie Blue.

Please note: All products are "FOR RESEARCH USE ONLY. NOT FOR USE IN DIAGNOSTIC PROCEDURES"

Our Abpromise to you: Quality guaranteed and expert technical support

- Replacement or refund for products not performing as stated on the datasheet
- Valid for 12 months from date of delivery
- Response to your inquiry within 24 hours
- We provide support in Chinese, English, French, German, Japanese and Spanish
- Extensive multi-media technical resources to help you
- We investigate all quality concerns to ensure our products perform to the highest standards

If the product does not perform as described on this datasheet, we will offer a refund or replacement. For full details of the Abpromise, please visit <https://www.abcam.co.jp/abpromise> or contact our technical team.

Terms and conditions

- Guarantee only valid for products bought direct from Abcam or one of our authorized distributors