

Recombinant human GRK2 protein ab125620

画像数 5

製品の詳細

製品名	Recombinant human GRK2 protein
生理活性	The specific activity of ab125620 was determined to be 5.3 nmol/mg/min.
精製度	> 90 % Densitometry. Affinity purified.
発現系	Baculovirus infected Sf9 cells
アクセッション番号	<u>P25098</u>
タンパク質長	Full length protein
Animal free	No
由来	Recombinant
生物種	Human
予測される分子量	102 kDa including tags
領域	2 to 689
タグ	GST tag N-Terminus

特性

Our **Abpromise guarantee** covers the use of **ab125620** in the following tested applications.

The application notes include recommended starting dilutions; optimal dilutions/concentrations should be determined by the end user.

アプリケーション	Western blot Functional Studies SDS-PAGE
製品の状態	Liquid
備考	<u>ab204876</u> (Cdc25C peptide) can be utilized as a substrate for assessing kinase activity

前処理および保存

保存方法および安定性	Shipped on dry ice. Upon delivery aliquot and store at -80°C. Avoid freeze / thaw cycles. pH: 7.50 Constituents: 0.31% Glutathione, 0.002% PMSF, 0.004% DTT, 0.79% Tris HCl, 0.003% EDTA, 25% Glycerol (glycerin, glycerine), 0.88% Sodium chloride
------------	---

This product is an active protein and may elicit a biological response in vivo, handle with caution.

関連情報

機能

Specifically phosphorylates the agonist-occupied form of the beta-adrenergic and closely related receptors, probably inducing a desensitization of them. Key regulator of LPAR1 signaling. Competes with RALA for binding to LPAR1 thus affecting the signaling properties of the receptor. Desensitizes LPAR1 and LPAR2 in a phosphorylation-independent manner.

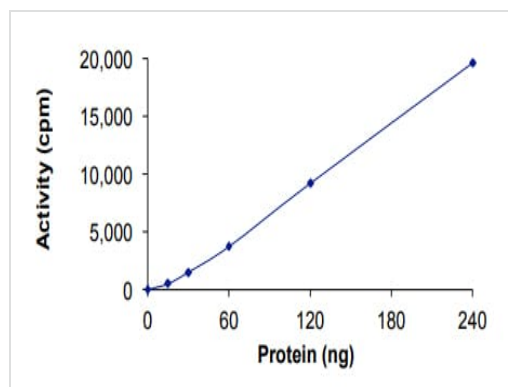
組織特異性

Expressed in peripheral blood leukocytes.

配列類似性

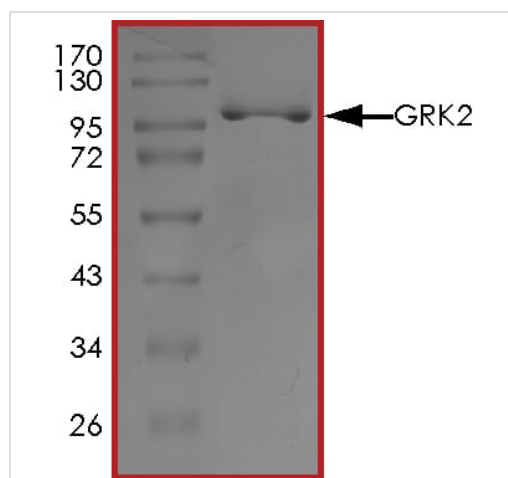
Belongs to the protein kinase superfamily. AGC Ser/Thr protein kinase family. GPRK subfamily. Contains 1 AGC-kinase C-terminal domain. Contains 1 PH domain. Contains 1 protein kinase domain. Contains 1 RGS domain.

画像



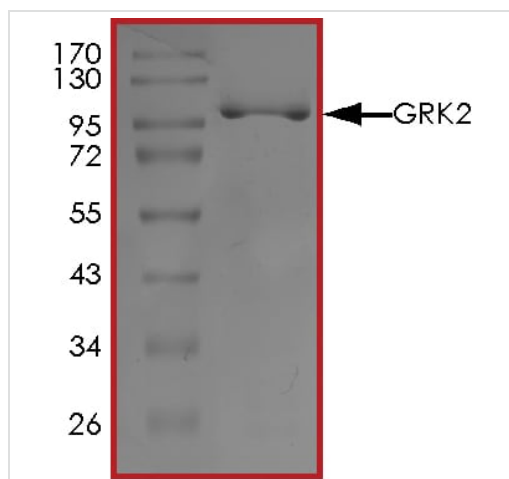
The specific activity of GRK2 (ab125620) was determined to be 5 nmol/min/mg as per activity assay protocol

Functional Studies - Recombinant human GRK2 protein (ab125620)



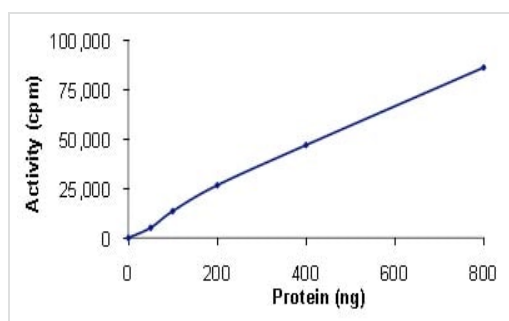
SDS PAGE analysis of ab125620

SDS-PAGE - Recombinant human GRK2 protein (ab125620)



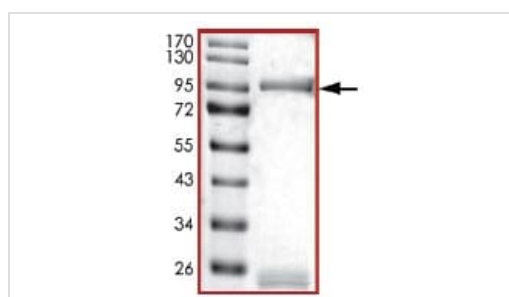
SDS PAGE analysis of ab125620

SDS-PAGE - Recombinant human GRK2 protein
(ab125620)



The specific activity of ab125620 was determined to be 5.3 nmol/mg/min by Kinase Assay.

Functional Studies - Recombinant human GRK2
protein (ab125620)



SDS-PAGE analysis of ab125620.

SDS-PAGE - Recombinant human GRK2 protein
(ab125620)

Please note: All products are "FOR RESEARCH USE ONLY. NOT FOR USE IN DIAGNOSTIC PROCEDURES"

Our Abpromise to you: Quality guaranteed and expert technical support

- Replacement or refund for products not performing as stated on the datasheet
- Valid for 12 months from date of delivery

- Response to your inquiry within 24 hours
- We provide support in Chinese, English, French, German, Japanese and Spanish
- Extensive multi-media technical resources to help you
- We investigate all quality concerns to ensure our products perform to the highest standards

If the product does not perform as described on this datasheet, we will offer a refund or replacement. For full details of the Abpromise, please visit <https://www.abcam.co.jp/abpromise> or contact our technical team.

Terms and conditions

- Guarantee only valid for products bought direct from Abcam or one of our authorized distributors