

Recombinant Human Gremlin 1 protein ab111462

画像数 1

製品の詳細

製品名	Recombinant Human Gremlin 1 protein
精製度	> 95 % SDS-PAGE. Silver staining
発現系	Escherichia coli
アクセッション番号	<u>O60565</u>
タンパク質長	Protein fragment
Animal free	No
由来	Recombinant
生物種	Human
配列	MKKKGSQGAI PPPDKAQHNDSEQTQSPQQPGSRNRGRGQGRG TAMPGEEV LESSQEALHVTERKYLKRDWCKTQPLKQTIHEEGCNSRTIIN RFCYGQCN SFYIPRHIRKEEGSFQSCSFCKPKKFTTMMVTLNCPQLPPT KKKRVTRV KQCRCISIDL
予測される分子量	18 kDa
領域	25 to 184

特性

Our **Abpromise guarantee** covers the use of **ab111462** in the following tested applications.

The application notes include recommended starting dilutions; optimal dilutions/concentrations should be determined by the end user.

アプリケーション	SDS-PAGE
製品の状態	Lyophilized

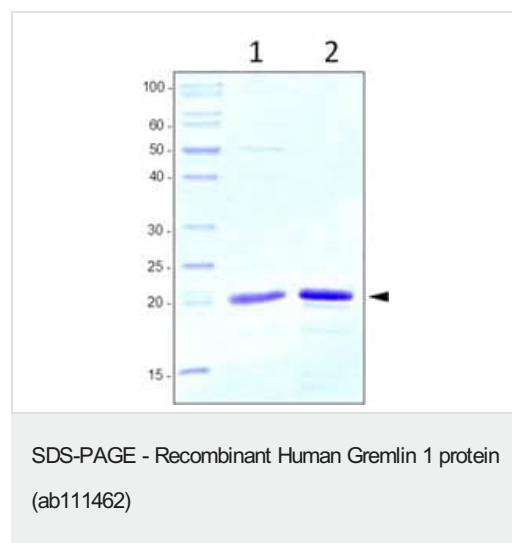
前処理および保存

保存方法および安定性	Shipped at 4°C. Upon delivery aliquot and store at -20°C. Avoid repeated freeze / thaw cycles. Constituent: 0.3% Acetic acid
再構成	Reconstitute in 50mM acetic acid or sterile water to a concentration of 0.1 mg/ml.

関連情報

機能	Cytokine that may play an important role during carcinogenesis and metanephric kidney organogenesis, as a BMP antagonist required for early limb outgrowth and patterning in maintaining the FGF4-SHH feedback loop. Down-regulates the BMP4 signaling in a dose-dependent manner. Acts as inhibitor of monocyte chemotaxis.
組織特異性	Highly expressed in small intestine, fetal brain and colon. Expression is restricted to intestinal subepithelial myofibroblasts (ISEMFs) at the crypt base. In subjects with HMPS1, by contrast, GREM1 is expressed, not only in basal ISEMFs, but also at very high levels in epithelial cells (predominantly colonocytes), with expression extending most of the way up the sides of the crypt. Weakly expressed in brain, ovary, prostate, pancreas and skeletal muscle. In brain found in the region localized around the internal capsule in the large subcortical nuclei, including caudate, putamen, substantia nigra, thalamus and subthalamus. Predominantly expressed in normal cells including neurons, astrocytes and fibroblasts.
関連疾患	Polyposis syndrome, mixed hereditary 1
配列類似性	Belongs to the DAN family. Contains 1 CTCK (C-terminal cystine knot-like) domain.
細胞内局在	Secreted.

画像



SDS-PAGE analysis of recombinant Human Gremlin 1 (ab111462). Samples were loaded in 15% SDS-polyacrylamide gel and stained with Coomassie blue. Lane 1: unreduced Gremlin 1; Lane 2: reduced Gremlin 1.

Please note: All products are "FOR RESEARCH USE ONLY. NOT FOR USE IN DIAGNOSTIC PROCEDURES"

Our Abpromise to you: Quality guaranteed and expert technical support

- Replacement or refund for products not performing as stated on the datasheet
- Valid for 12 months from date of delivery
- Response to your inquiry within 24 hours

- We provide support in Chinese, English, French, German, Japanese and Spanish
- Extensive multi-media technical resources to help you
- We investigate all quality concerns to ensure our products perform to the highest standards

If the product does not perform as described on this datasheet, we will offer a refund or replacement. For full details of the Abpromise, please visit <https://www.abcam.co.jp/abpromise> or contact our technical team.

Terms and conditions

- Guarantee only valid for products bought direct from Abcam or one of our authorized distributors