

# Recombinant Human GNAI1 protein ab113585

**1 References** [画像数 1](#)

### 製品の詳細

製品名	Recombinant Human GNAI1 protein
精製度	> 95 % SDS-PAGE. ab113585 was purified using conventional chromatography.
発現系	Escherichia coli
アクセッション番号	<b>P63096</b>
タンパク質長	Full length protein
Animal free	No
由来	Recombinant
生物種	Human
配列	<p><b>MGSSHHHHHHSSGLVPRGSHMGSMGCTLSAEDKAAVERSK</b>  <b>MIDRNLREDG</b>  <b>EKAAREVKLLLLLGAGESGKSTIVKQMKIIEAGYSEEECKQY</b>  <b>KAVVYSNT</b>  <b>IQSIIAIIIRAMGRLKIDFGDSARADDARQLFVLAGAAEEGFM</b>  <b>TAELAGVI</b>  <b>KRLWKDSGVQACFNRSREYQLNDSAAYYLNDLDRIAQPNYIP</b>  <b>TQQDVLRT</b>  <b>RVKTTGIVETHFTFKDLHFKMFDVGGQRSEKRWIHCFEQVT</b>  <b>AIIFCVAL</b>  <b>SDYDLVLAEDEEMNRMHESMKLFDSICNNKWFTDTSIILFLN</b>  <b>KKDLFEK</b>  <b>IKKSPLTICYPEYAGSNTYEEAAAYIQCFEDLNKRKDTKEI</b>  <b>YTHFTCAT DTKNVQFVFDAVTDVVIKNNLKDCGLF</b></p>
予測される分子量	43 kDa including tags
領域	1 to 354
タグ	His tag N-Terminus

### 特性

Our **Abpromise guarantee** covers the use of **ab113585** in the following tested applications.

The application notes include recommended starting dilutions; optimal dilutions/concentrations should be determined by the end user.

**アプリケーション**                      SDS-PAGE

質量分析	Mass Spectrometry
製品の状態	MALDI-TOF
備考	Liquid
	This product was previously labelled as G protein alpha inhibitor 1, G Protein alpha Inhibitor 1+2

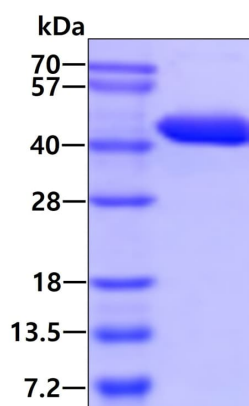
## 前処理および保存

保存方法および安定性	Shipped at 4°C. Store at +4°C short term (1-2 weeks). Upon delivery aliquot. Store at -20°C or -80°C. Avoid freeze / thaw cycle. pH: 8.00 Constituents: 0.32% Tris HCl, 10% Glycerol (glycerin, glycerine)
------------	--

## 関連情報

機能	Guanine nucleotide-binding proteins (G proteins) are involved as modulators or transducers in various transmembrane signaling systems. The G(i) proteins are involved in hormonal regulation of adenylate cyclase: they inhibit the cyclase in response to beta-adrenergic stimuli. The inactive GDP-bound form prevents the association of RGS14 with centrosomes and is required for the translocation of RGS14 from the cytoplasm to the plasma membrane. May play a role in cell division.
配列類似性	Belongs to the G-alpha family. G(i/o/t/z) subfamily.
細胞内局在	Nucleus. Cytoplasm. Cell membrane. Cytoplasm > cytoskeleton > centrosome. Localized at the plasma membrane throughout mitosis. Colocalizes with RIC8A and RGS14 at the plasma membrane (By similarity). Localizes in the centrosomes of interphase and mitotic cells, but not in centrosomes during cytokinesis. Detected at the cleavage furrow or the midbody.

## 画像



3ug by SDS-PAGE under reducing conditions and visualized by coomassie blue stain.

SDS-PAGE - Recombinant Human GNAI1 protein  
(ab113585)

**Please note:** All products are "FOR RESEARCH USE ONLY. NOT FOR USE IN DIAGNOSTIC PROCEDURES"

### **Our Abpromise to you: Quality guaranteed and expert technical support**

---

- Replacement or refund for products not performing as stated on the datasheet
- Valid for 12 months from date of delivery
- Response to your inquiry within 24 hours
  
- We provide support in Chinese, English, French, German, Japanese and Spanish
- Extensive multi-media technical resources to help you
- We investigate all quality concerns to ensure our products perform to the highest standards

If the product does not perform as described on this datasheet, we will offer a refund or replacement. For full details of the Abpromise, please visit <https://www.abcam.co.jp/abpromise> or contact our technical team.

### **Terms and conditions**

---

- Guarantee only valid for products bought direct from Abcam or one of our authorized distributors