

Recombinant human Galectin 3 protein (Active) ab89487

3 References [画像数 1](#)

製品の詳細

製品名	Recombinant human Galectin 3 protein (Active)	
生理活性	The ED₅₀ for this effect is ≤ 15 ug/ml. Measured by its ability to agglutinate human red blood cells.	
精製度	> 95 % SDS-PAGE. Purified by using conventional chromatography techniques	
発現系	Escherichia coli	
アクセッション番号	<u>P17931</u>	
タンパク質長	Full length protein	
Animal free	No	
由来	Recombinant	
生物種	Human	
配列	MADNFSLHDA LSGSGNPNPQ GWPGAWGNQP AGAGGYPGAS YPGAYPGQAP PGAYPGQAPP GAYPGAPGAY PGAPAPGVYP GPPSGPGAYP SSGQPSATGA YPATGPYGAP AGPLIVPYNL PLPGGVVPRM LITILGTVKP NANRIALDFQ RGNDVAFHFN PRFNENRRV IVCNTKLDNN WGREERQSVF PFESGKPFKI QVLVEPDHFK VAVNDAHLLQ YNHRVKKLNE ISKLGISGDI DLTSASYTMI	
予測される分子量	28 kDa including tags	
領域	1 to 250	
タグ	His tag N-Terminus	
配列の追加情報	(NCBI NP_002297) MW confirmed by MALDI-TOF.	

特性

Our **Abpromise guarantee** covers the use of **ab89487** in the following tested applications.

The application notes include recommended starting dilutions; optimal dilutions/concentrations should be determined by the end user.

アプリケーション	Functional Studies
	SDS-PAGE

製品の状態

Liquid

前処理および保存

保存方法および安定性

Shipped at 4°C. Store at +4°C short term (1-2 weeks). Upon delivery aliquot. Store at -20°C or -80°C. Avoid freeze / thaw cycle.

pH: 8.00

Constituents: 0.0154% DTT, 0.316% Tris HCl, 10% Glycerol, 0.58% Sodium chloride

This product is an active protein and may elicit a biological response in vivo, handle with caution.

関連情報

機能

Galactose-specific lectin which binds IgE. May mediate with the alpha-3, beta-1 integrin the stimulation by CSPG4 of endothelial cells migration. Together with DMBT1, required for terminal differentiation of columnar epithelial cells during early embryogenesis.

組織特異性

A major expression is found in the colonic epithelium. It is also abundant in the activated macrophages.

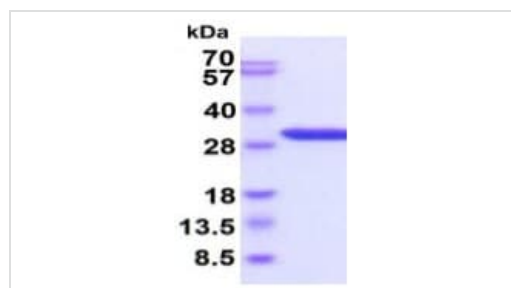
配列類似性

Contains 1 galectin domain.

細胞内局在

Nucleus. Cytoplasmic in adenomas and carcinomas. May be secreted by a non-classical secretory pathway and associate with the cell surface.

画像



3ug of reduced ab89487 on SDS-PAGE, stained by Coomassie Blue.

SDS-PAGE - Recombinant human Galectin 3 protein (ab89487)

Please note: All products are "FOR RESEARCH USE ONLY. NOT FOR USE IN DIAGNOSTIC PROCEDURES"

Our Abpromise to you: Quality guaranteed and expert technical support

- Replacement or refund for products not performing as stated on the datasheet
- Valid for 12 months from date of delivery
- Response to your inquiry within 24 hours
- We provide support in Chinese, English, French, German, Japanese and Spanish

- Extensive multi-media technical resources to help you
- We investigate all quality concerns to ensure our products perform to the highest standards

If the product does not perform as described on this datasheet, we will offer a refund or replacement. For full details of the Abpromise, please visit <https://www.abcam.co.jp/abpromise> or contact our technical team.

Terms and conditions

- Guarantee only valid for products bought direct from Abcam or one of our authorized distributors